

CD90 (Thy-1) Monoclonal Antibody (eBio5E10 (5E10)), Alexa Fluor™ 700, eBioscience™

Product Details	
Size	100 Tests
Species Reactivity	Human
Host/Isotype	Mouse / IgG1, kappa
Recommended Isotype Control	Mouse IgG1 kappa Isotype Control (P3.6.2.8.1), Alexa Fluor™ 700, eBioscience™
Class	Monoclonal
Type	Antibody
Clone	eBio5E10 (5E10)
Conjugate	Alexa Fluor™ 700
Excitation/Emission Max	696/719 nm
Form	Liquid
Concentration	5 µL/Test
Purification	Affinity chromatography
Storage buffer	PBS, pH 7.2, with 0.2% BSA
Contains	0.09% sodium azide
Storage conditions	4° C, store in dark, DO NOT FREEZE!
RRID	AB_2811893

Applications	Tested Dilution	Publications
Flow Cytometry (Flow)	5 µL (0.5 µg)/test	20 Publications

Product Specific Information

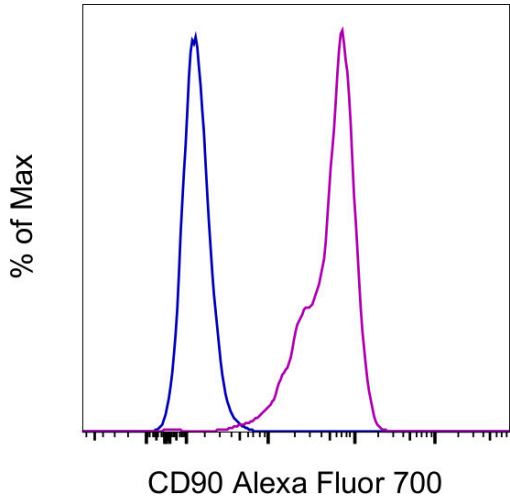
Description: The eBio5E10 monoclonal antibody reacts with human CD90, also known as Thy-1 (thymus cell antigen-1). CD90 is a 25-35 kDa receptor expressed on thymocytes, CD34+ prothymocytes, hematopoietic stem cells, neurons, a small subset of human fetal liver cells, cord blood cells, and bone marrow cells. CD90 is expressed on a subset of immature, CD34+ cells and a distinct subset of mature CD34- cells that are CD3+CD4+. The CD90+CD34+ population is enriched for cells capable of long-term culture. CD90 is involved in regulation of adhesion and signal transduction by T cells.

Applications Reported: This eBio5e10 antibody has been reported for use in flow cytometric analysis.

Applications Tested: This eBio5e10 antibody has been pre-diluted and tested by flow cytometric analysis of human erythroleukemia (HEL) cells. This may be used at 5 µL (0.5 µg) per test. A test is defined as the amount (µg) of antibody that will stain a cell sample in a final volume of 100 µL. Cell number should be determined empirically but can range from 10^5 to 10^8 cells/test.

Alexa Fluor 700 emits at 723 nm and can be excited with the red laser (633-647 nm). Most instruments will require a 685 LP mirror and 710/20 band pass filter. Please make sure that your instrument is capable of detecting this fluorochrome.

Excitation: 633-647 nm; Emission: 723 nm; Laser: Red Laser



CD90 (Thy-1) Antibody (56-0909-42) in Flow
HEL cells were stained with Mouse IgG1 kappa Isotype Control, Alexa Fluor 700 (Product # 56-4714-80) (blue histogram) or CD90 (Thy-1) Monoclonal Antibody, Alexa Fluor 700 (purple histogram). Viable cells were used for analysis, as determined by 7-AAD (Product # 00-6993-50).

[View more figures on thermofisher.com](#)

20 References

Flow Cytometry (20)

<p>STAR protocols</p> <p>Fluorescence-activated cell sorting and phenotypic characterization of human fibro-adipogenic progenitors.</p> <p>"Published figure using CD90 (Thy-1) monoclonal antibody (Product # 56-0909-42) in Flow Cytometry"</p> <p>Authors: Billeskov TB,Jensen JB,Jessen N,Farup J</p>	<p>Year</p> <p>2023</p>
<p>International journal of molecular sciences</p> <p>Fused Cells between Human-Adipose-Derived Mesenchymal Stem Cells and Monocytes Keep Stemness Properties and Acquire High Mobility.</p> <p>"Published figure using CD90 (Thy-1) monoclonal antibody (Product # 56-0909-42) in Flow Cytometry"</p> <p>Authors: Montalbán-Hernández K,Casado-Sánchez C,Avendaño-Ortiz J,Casalvilla-Deñás JC,Bonel-Pérez GC,Prado-Montero J,Valentín-Quiroga J,Lozano-Rodríguez R,Terrón-Arcos V,de la Bastida FR,Córdoba L,Laso-García F, Diekhorst L,Del Fresno C,López-Collazo E</p>	<p>Year</p> <p>2022</p>

[View more Flow references on thermofisher.com](#)

More applications with references on thermofisher.com

For Research Use Only. Not for use in diagnostic procedures. Not for resale without express authorization. Products are warranted to operate or perform substantially in conformance with published Product specifications in effect at the time of sale, as set forth in the Production documentation, specifications and/or accompanying package inserts ("Documentation"). No claim of suitability for use in applications regulated by FDA is made. The warranty provided herein is valid only when used by properly trained individuals. Unless otherwise stated in the Documentation, this warranty is limited to one year from date of shipment when the Product is subjected to normal, proper and intended usage. This warranty does not extend to anyone other than the Buyer. Any model or sample furnished to Buyer is merely illustrative of the general type and quality of goods and does not represent that any Product will conform to such model or sample. NO OTHER WARRANTIES, EXPRESS OR IMPLIED, ARE GRANTED INCLUDING WITHOUT LIMITATION, IMPLIED WARRANTIES OF MERCHANTABILITY, FITNESS FOR ANY PARTICULAR PURPOSE, OR NON-INFRINGEMENT. BUYER'S EXCLUSIVE REMEDY FOR NON-CONFORMING PRODUCTS DURING THE WARRANTY PERIOD IS LIMITED TO REPAIR, REPLACEMENT OF OR REFUND FOR THE NON-CONFORMING PRODUCT(S) AT SELLER'S SOLE OPTION. THERE IS NO OBLIGATION TO REPAIR, REPLACE OR REFUND FOR PRODUCTS AS THE RESULT OF (i) ACCIDENT, DISASTER OR EVENT OF FORCE MAJEURE, (ii) MISUSE, FAULT OR NEGLIGENCE OF OR BY BUYER, (iii) USE OF THE PRODUCTS IN A MANNER FOR WHICH THEY WERE NOT DESIGNED, OR (iv) IMPROPER STORAGE AND HANDLING OF THE PRODUCTS. Unless otherwise expressly stated on the Product or in the documentation accompanying the Product, the Product is intended for research only and is not to be used for any other purpose, including without limitation, unauthorized commercial uses, in vitro diagnostic uses, ex vivo or in vivo therapeutic uses, or any type of consumption by or application to human or animals.