

HLA-DR Monoclonal Antibody (LN3), Alexa Fluor 700, eBioscience™

Product Details	
Size	100 Tests
Species	Human
Published Species	Human
Expression System	Mouse / IgG2b, kappa
Recommended Isotype Control	Mouse IgG2b kappa Isotype Control (eBMG2b), Alexa Fluor 700, eBioscience™
Class	Monoclonal
Type	Antibody
Clone	LN3
Conjugate	Alexa Fluor® 700
Form	Liquid
Concentration	5 µL/Test
Purification	Affinity chromatography
Storage buffer	PBS, pH 7.2, with 0.1% gelatin, 0.2% BSA
Contains	0.09% sodium azide
Storage Conditions	4° C, store in dark, DO NOT FREEZE!
RRID	AB_1907427

Applications	Tested Dilution	Publications
Flow Cytometry (Flow)	5 µL (0.01 µg)/test	15 Publications
ELISA (ELISA)	-	1 Publication
Immunocytochemistry (ICC)	-	1 Publication
Immunohistochemistry (IHC)	-	1 Publication

Product Specific Information

Description: The LN3 mAb reacts with the human major histocompatibility complex (MHC) class II, HLA-DR. HLA-DR is expressed on the surface of human antigen presenting cells (APC) including B cells, monocytes, macrophages, DCs, and activated T cells. HLA-DR is a heterodimeric transmembrane protein composed of alpha and beta subunits and plays an important role in the presentation of peptides to CD4⁺ T lymphocytes.

Applications Reported: This LN3 antibody has been reported for use in flow cytometric analysis.

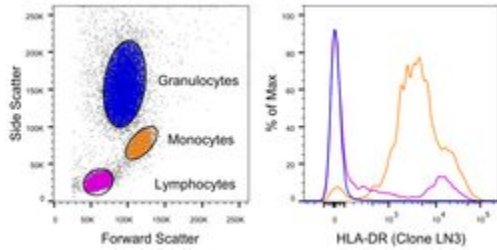
Applications Tested: This LN3 antibody has been pre-titrated and tested by flow cytometric analysis of normal human peripheral blood cells. This can be used at 5 µL (0.01 µg) per test. A test is defined as the amount (µg) of antibody that will stain a cell sample in a final volume of 100 µL. Cell number should be determined empirically but can range from 10⁵ to 10⁸ cells/test.

Alexa Fluor® 700 emits at 723 nm and can be excited with the red laser (633 nm). Most instruments will require a 685 LP mirror and 710/20 filter. Please make sure that your instrument is capable of detecting this fluorochrome.

Excitation: 633-647 nm; Emission: 723 nm; Laser: Red Laser.

Filtration: 0.2 µm post-manufacturing filtered.

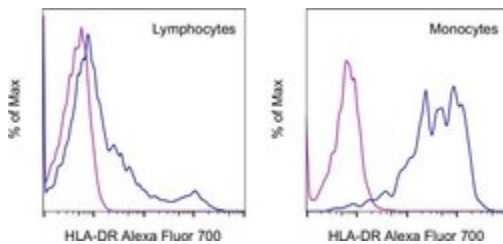
Advanced Verification Data



HLA-DR Antibody (56-9956-42)

Staining of human peripheral blood cells. As expected based on known relative expression patterns, HLA-DR clone LN3 stains monocytes and a subset of lymphocytes (B cells) but does not stain granulocytes. Details: Normal human whole blood was surface stained with HLA-DR (clone LN3). After staining, red blood cells were lysed using 1-step Fix/Lyse Buffer. Cells in the lymphocyte (purple histogram), monocyte (orange histogram), or granulocyte (blue histogram) gates were used for analysis of HLA-DR staining. Relative expression validation info.

Product Images For HLA-DR Monoclonal Antibody (LN3), Alexa Fluor 700, eBioscience™



HLA-DR Antibody (56-9956-42) in Flow

Normal human peripheral blood cells were stained with Mouse IgG2b kappa Isotype Control, Alexa Fluor 700 (Product # 56-4732-80) (blue histogram) or HLA-DR Monoclonal Antibody, Alexa Fluor 700 (purple histogram). Cells in the lymphocyte gate (left) or monocyte gate (right) were used for analysis.

[View more figures on thermofisher.com](http://thermofisher.com)

18 References

Immunohistochemistry (1)

Frontiers in molecular neuroscience

Increased White Matter Inflammation in Aging- and Alzheimer's Disease Brain.

"Published figure using HLA-DR monoclonal antibody (Product # 56-9956-42) in Immunohistochemistry"

Authors: Raj D, Yin Z, Breur M, Doorduyn J, Holtman IR, Olah M, Mantingh-Otter IJ, Van Dam D, De Deyn PP, den Dunnen W, Eggen BJL, Amor S, Boddeke E

Species
Not Applicable

Dilution
Not Cited

Year
2020

Flow Cytometry (15)

Cell reports

Large-Scale Human Dendritic Cell Differentiation Revealing Notch-Dependent Lineage Bifurcation and Heterogeneity.

"Published figure using HLA-DR monoclonal antibody (Product # 56-9956-42) in Flow Cytometry"

Authors: Balan S, Arnold-Schrauf C, Abbas A, Couespel N, Savoret J, Imperatore F, Villani AC, Vu Manh TP, Bhardwaj N, Dalod M

Species
Human

Dilution
1:100,000

Year
2018

Stem cell research and therapy

Comprehensive characterization of chorionic villi-derived mesenchymal stromal cells from human placenta.

"Published figure using HLA-DR monoclonal antibody (Product # 56-9956-42) in Flow Cytometry"

Authors: Ventura Ferreira MS, Bienert M, Müller K, Rath B, Goecke T, Opländer C, Braunschweig T, Mela P, Brümmendorf TH, Beier F, Neuss S

Species
Not Applicable

Dilution
Not Cited

Year
2018

[View more Flow references on thermofisher.com](#)

ELISA (1)

Stem cell reports

Lack of T Cell Response to iPSC-Derived Retinal Pigment Epithelial Cells from HLA Homozygous Donors.

"Published figure using HLA-DR monoclonal antibody (Product # 56-9956-42) in ELISA"

Authors: Sugita S, Iwasaki Y, Makabe K, Kimura T, Futagami T, Suegami S, Takahashi M

Species
Human

Dilution
Not Cited

Year
2016

More applications with references on thermofisher.com

ICC (1)

For Research Use Only. Not for use in diagnostic procedures. Not for resale without express authorization. Products are warranted to operate or perform substantially in conformance with published Product specifications in effect at the time of sale, as set forth in the Production documentation, specifications and/or accompanying package inserts ("Documentation"). No claim of suitability for use in applications regulated by FDA is made. The warranty provided herein is valid only when used by properly trained individuals. Unless otherwise stated in the Documentation, this warranty is limited to one year from date of shipment when the Product is subjected to normal, proper and intended usage. This warranty does not extend to anyone other than the Buyer. Any model or sample furnished to Buyer is merely illustrative of the general type and quality of goods and does not represent that any Product will conform to such model or sample. NO OTHER WARRANTIES, EXPRESS OR IMPLIED, ARE GRANTED INCLUDING WITHOUT LIMITATION, IMPLIED WARRANTIES OF MERCHANTABILITY, FITNESS FOR ANY PARTICULAR PURPOSE, OR NON-INFRINGEMENT. BUYER'S EXCLUSIVE REMEDY FOR NON-CONFORMING PRODUCTS DURING THE WARRANTY PERIOD IS LIMITED TO REPAIR, REPLACEMENT OF OR REFUND FOR THE NON-CONFORMING PRODUCT(S) AT SELLER'S SOLE OPTION. THERE IS NO OBLIGATION TO REPAIR, REPLACE OR REFUND FOR PRODUCTS AS THE RESULT OF (I) ACCIDENT, DISASTER OR EVENT OF FORCE MAJEURE, (II) MISUSE, FAULT OR NEGLIGENCE OF OR BY BUYER, (III) USE OF THE PRODUCTS IN A MANNER FOR WHICH THEY WERE NOT DESIGNED, OR (IV) IMPROPER STORAGE AND HANDLING OF THE PRODUCTS. Unless otherwise expressly stated on the Product or in the documentation accompanying the Product, the Product is intended for research only and is not to be used for any other purpose, including without limitation, unauthorized commercial uses, in vitro diagnostic uses, ex vivo or in vivo therapeutic uses, or any type of consumption by or application to human or animals.