

CD25 Monoclonal Antibody (PC61.5), Alexa Fluor™ 660, eBioscience™

Product Details	
Size	100 µg
Species Reactivity	Mouse
Host/Isotype	Rat / IgG1, lambda
Recommended Isotype Control	Rat IgG1 kappa Isotype Control (eBRG1), Alexa Fluor™ 660, eBioscience™
Class	Monoclonal
Type	Antibody
Clone	PC61.5
Conjugate	Alexa Fluor™ 660
Excitation/Emission Max	663/691 nm
Form	Liquid
Concentration	0.2 mg/mL
Purification	Affinity chromatography
Storage buffer	PBS, pH 7.2
Contains	0.09% sodium azide
Storage conditions	4° C, store in dark, DO NOT FREEZE!
RRID	AB_2896255

Applications	Tested Dilution	Publications
Flow Cytometry (Flow)	0.125 µg/test	-

Product Specific Information

Description: The PC61.5 antibody reacts with mouse CD25, the 55 kDa interleukin-2 receptor alpha chain (IL-2R alpha). CD25 is expressed by early progenitors of the T and B lineage as well as by activated mature T and B lymphocytes. By itself, CD25 binds IL-2 only with low affinity. However, CD25 associates with CD122 (IL-2 receptor beta chain) and CD132 (common gamma chain) to form the high affinity IL-2 receptor. Binding of IL-2 to both the high and low affinity classes of IL-2 receptor is inhibited by the PC61.5 antibody. CD25 plays a role in lymphocyte differentiation and activation/proliferation.

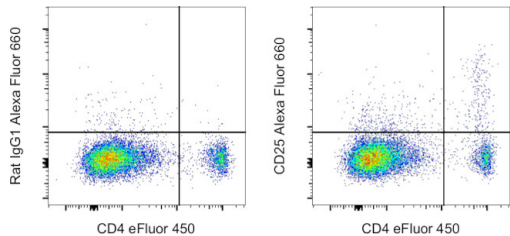
Applications Reported: This PC61.5 antibody has been reported for use in flow cytometric analysis.

Applications Tested: This PC61.5 antibody has been tested by flow cytometric analysis of mouse splenocytes. This may be used at less than or equal to 0.125 µg per test. A test is defined as the amount (µg) of antibody that will stain a cell sample in a final volume of 100 µL. Cell number should be determined empirically but can range from 10⁵ to 10⁸ cells/test. It is recommended that the antibody be carefully titrated for optimal performance in the assay of interest.

Alexa Fluor 660 emits at 690 nm and is intended for use on spectral cytometers where it may be multiplexed with APC, Alexa Fluor 647 and Alexa Fluor 700.

Excitation: 662 nm; Emission: 690 nm; Laser: Red Laser

Product Images For CD25 Monoclonal Antibody (PC61.5), Alexa Fluor™ 660, eBioscience™



CD25 Antibody (606-0251-82) in Flow

C57BL/6 mouse splenocytes were stained with CD4 Monoclonal Antibody, eFluor 450 (Product # 48-0042-82) and 0.06 µg of Rat IgG1 kappa Isotype Control, Alexa Fluor 660 (Product # 606-4301-81) (left) or 0.06 µg of CD25 Monoclonal Antibody, Alexa Fluor 660 (right). Cells in the lymphocyte gate were used for analysis. This data was collected on a 5-laser Cytex Aurora full spectral cytometer.

For Research Use Only. Not for use in diagnostic procedures. Not for resale without express authorization. Products are warranted to operate or perform substantially in conformance with published Product specifications in effect at the time of sale, as set forth in the Production documentation, specifications and/or accompanying package inserts ("Documentation"). No claim of suitability for use in applications regulated by FDA is made. The warranty provided herein is valid only when used by properly trained individuals. Unless otherwise stated in the Documentation, this warranty is limited to one year from date of shipment when the Product is subjected to normal, proper and intended usage. This warranty does not extend to anyone other than the Buyer. Any model or sample furnished to Buyer is merely illustrative of the general type and quality of goods and does not represent that any Product will conform to such model or sample. NO OTHER WARRANTIES, EXPRESS OR IMPLIED, ARE GRANTED INCLUDING WITHOUT LIMITATION, IMPLIED WARRANTIES OF MERCHANTABILITY, FITNESS FOR ANY PARTICULAR PURPOSE, OR NON INFRINGEMENT. BUYER'S EXCLUSIVE REMEDY FOR NON-CONFORMING PRODUCTS DURING THE WARRANTY PERIOD IS LIMITED TO REPAIR, REPLACEMENT OF OR REFUND FOR THE NON-CONFORMING PRODUCT(S) AT SELLER'S SOLE OPTION. THERE IS NO OBLIGATION TO REPAIR, REPLACE OR REFUND FOR PRODUCTS AS THE RESULT OF (I) ACCIDENT, DISASTER OR EVENT OF FORCE MAJEURE, (II) MISUSE, FAULT OR NEGLIGENCE OF OR BY BUYER, (III) USE OF THE PRODUCTS IN A MANNER FOR WHICH THEY WERE NOT DESIGNED, OR (IV) IMPROPER STORAGE AND HANDLING OF THE PRODUCTS. Unless otherwise expressly stated on the Product or in the documentation accompanying the Product, the Product is intended for research only and is not to be used for any other purpose, including without limitation, unauthorized commercial uses, in vitro diagnostic uses, ex vivo or in vivo therapeutic uses, or any type of consumption by or application to human or animals.