

# T-bet Monoclonal Antibody (eBio4B10 (4B10)), Alexa Fluor™ 660, eBioscience™

Product Details	
Size	25 µg
Species Reactivity	Human, Mouse, Rhesus monkey
Host/Isotype	Mouse / IgG1, kappa
Recommended Isotype Control	Mouse IgG1 kappa Isotype Control (P3.6.2.8.1), Alexa Fluor™ 660, eBioscience™
Class	Monoclonal
Type	Antibody
Clone	eBio4B10 (4B10)
Conjugate	Alexa Fluor™ 660
Excitation/Emission Max	663/691 nm
Form	Liquid
Concentration	0.2 mg/mL
Purification	Affinity chromatography
Storage buffer	PBS, pH 7.2
Contains	0.09% sodium azide
Storage conditions	4° C, store in dark, DO NOT FREEZE!
RRID	AB_2896289

Applications	Tested Dilution	Publications
Flow Cytometry (Flow)	0.25 µg/test	-

## Product Specific Information

**Description:** The eBio4B10 (4B10) monoclonal antibody reacts with mouse and human T-bet. T-bet is a Th1-specific T-box transcription factor critical to the development of the Th1 CD4+ T cell lineage. This is known based on the observations that T-Bet deficient mice have impaired Th1 cell development, and that ectopic expression of T-Bet results in development skewed to the Th1 lineage. T-Bet expression is induced by the Th1 cytokine IFN gamma, and T-Bet also regulates the expression of IFN gamma, likely, at least in part, through the modification of DNA accessibility and histone remodeling. In addition to IFN gamma, T-Bet is also known to regulate the expression of IL-12R beta and IL-2. Moreover, T-Bet plays a role in class-switch recombination in B-cells.

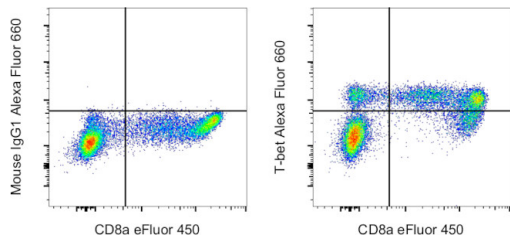
**Applications Reported:** This eBio4B10 (4B10) antibody has been reported for use in intracellular staining followed by flow cytometric analysis.

**Applications Tested:** This eBio4B10 (4B10) antibody has been tested by intracellular staining followed by flow cytometric analysis of normal human peripheral blood cells using the Foxp3/Transcription Factor Staining Buffer Set (Product # 00-5523-00) and protocol. Please refer to "Staining Intracellular Antigens for Flow Cytometry, Protocol B: One step protocol for intracellular (nuclear) proteins" located at Flow Protocols. This may be used at less than or equal to 0.25 µg per test. A test is defined as the amount (µg) of antibody that will stain a cell sample in a final volume of 100 µL. Cell number should be determined empirically but can range from 10<sup>5</sup> to 10<sup>8</sup> cells/test. It is recommended that the antibody be carefully titrated for optimal performance in the assay of interest.

Alexa Fluor 660 emits at 690 nm and is intended for use on spectral cytometers where it may be multiplexed with APC, Alexa Fluor 647 and Alexa Fluor 700.

Excitation: 662 nm; Emission: 690 nm; Laser: Red Laser

Product Images For T-bet Monoclonal Antibody (eBio4B10 (4B10)), Alexa Fluor™ 660, eBioscience™



T-bet Antibody (606-5825-80) in Flow

Normal human peripheral blood cells were surface-stained with CD8a Monoclonal Antibody, eFluor 450 (Product # 48-0088-42). Cells were then stained intracellularly, using the Foxp3/Transcription Factor Staining Buffer Set (Product # 00-5523-00) and protocol, with 0.125 µg of Mouse IgG1 kappa Isotype Control, Alexa Fluor 660 (Product # 606-4714-81) (left) or 0.125 µg of T-bet Monoclonal Antibody, Alexa Fluor 660 (right). Viable cells in the lymphocyte gate were used for analysis, as determined by Fixable Viability Dye eFluor 780 (Product # 65-0865-18). This data was collected on a 5-laser Cytex Aurora full spectral cytometer.

For Research Use Only. Not for use in diagnostic procedures. Not for resale without express authorization. Products are warranted to operate or perform substantially in conformance with published Product specifications in effect at the time of sale, as set forth in the Production documentation, specifications and/or accompanying package inserts ("Documentation"). No claim of suitability for use in applications regulated by FDA is made. The warranty provided herein is valid only when used by properly trained individuals. Unless otherwise stated in the Documentation, this warranty is limited to one year from date of shipment when the Product is subjected to normal, proper and intended usage. This warranty does not extend to anyone other than the Buyer. Any model or sample furnished to Buyer is merely illustrative of the general type and quality of goods and does not represent that any Product will conform to such model or sample. NO OTHER WARRANTIES, EXPRESS OR IMPLIED, ARE GRANTED INCLUDING WITHOUT LIMITATION, IMPLIED WARRANTIES OF MERCHANTABILITY, FITNESS FOR ANY PARTICULAR PURPOSE, OR NON INFRINGEMENT. BUYER'S EXCLUSIVE REMEDY FOR NON-CONFORMING PRODUCTS DURING THE WARRANTY PERIOD IS LIMITED TO REPAIR, REPLACEMENT OF OR REFUND FOR THE NON-CONFORMING PRODUCT(S) AT SELLER'S SOLE OPTION. THERE IS NO OBLIGATION TO REPAIR, REPLACE OR REFUND FOR PRODUCTS AS THE RESULT OF (I) ACCIDENT, DISASTER OR EVENT OF FORCE MAJEURE, (II) MISUSE, FAULT OR NEGLIGENCE OF OR BY BUYER, (III) USE OF THE PRODUCTS IN A MANNER FOR WHICH THEY WERE NOT DESIGNED, OR (IV) IMPROPER STORAGE AND HANDLING OF THE PRODUCTS. Unless otherwise expressly stated on the Product or in the documentation accompanying the Product, the Product is intended for research only and is not to be used for any other purpose, including without limitation, unauthorized commercial uses, in vitro diagnostic uses, ex vivo or in vivo therapeutic uses, or any type of consumption by or application to human or animals.