

CD8a Monoclonal Antibody (RPA-T8), PE-eFluor™ 610, eBioscience™

| Product Details | |
|-----------------------------|---|
| Size | 100 Tests |
| Species Reactivity | Human |
| Published Species | Rat, Human, Mouse |
| Host/Isotype | Mouse / IgG1, kappa |
| Recommended Isotype Control | Mouse IgG1 kappa Isotype Control (P3.6.2.8.1), PE-eFluor™ 610, eBioscience™ |
| Class | Monoclonal |
| Type | Antibody |
| Clone | RPA-T8 |
| Conjugate | PE-eFluor™ 610 |
| Excitation/Emission Max | 565/606 nm |
| Form | Liquid |
| Concentration | 5 µL/Test |
| Purification | Affinity chromatography |
| Storage buffer | PBS, pH 7.2, with 0.2% BSA |
| Contains | 0.09% sodium azide |
| Storage conditions | 4° C, store in dark, DO NOT FREEZE! |
| RRID | AB_2574526 |

| Applications | Tested Dilution | Publications |
|-----------------------|---------------------|-----------------|
| Western Blot (WB) | - | 1 Publication |
| Flow Cytometry (Flow) | 5 µL (0.06 µg)/test | 25 Publications |

Product Specific Information

Description: The RPA-T8 monoclonal antibody reacts with the human CD8a molecule, an approximately 32-34 kDa cell surface receptor expressed either as a heterodimer with the CD8 beta chain (CD8 alpha/beta) or as a homodimer (CD8 alpha/alpha). A majority of thymocytes and a subpopulation of mature T cells and NK cells express CD8a. CD8 binds to MHC class I and through its association with protein tyrosine kinase p56lck plays a role in T-cell development and activation of mature T cells.

Applications Reported: This RPA-T8 antibody has been reported for use in flow cytometric analysis.

Applications Tested: This RPA-T8 antibody has been pre-titrated and tested by flow cytometric analysis of normal human peripheral blood cells. This can be used at 5 µL (0.06 µg) per test. A test is defined as the amount (µg) of antibody that will stain a cell sample in a final volume of 100 µL. Cell number should be determined empirically but can range from 10^5 to 10^8 cells/test.

PE-eFluor® 610 can be excited with laser lines from 488-561 nm and emits at 607 nm. We recommend using a 610/20 band pass filter (equivalent to PE-Texas Red®). Please make sure that your instrument is capable of detecting this fluorochrome.

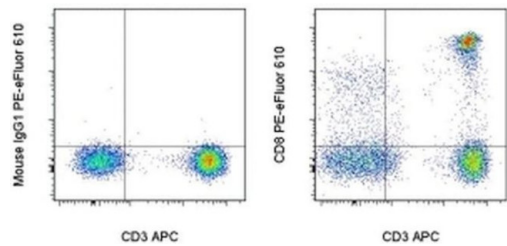
Light sensitivity: This tandem dye is sensitive to photo-induced oxidation. Please protect this vial and stained samples from light.

Fixation: Samples can be stored in IC Fixation Buffer (cat. 00-8222) (100 µL of cell sample + 100 µL of IC Fixation Buffer) or 1-step Fix/Lyse Solution (cat. 00-5333) for up to 3 days in the dark at 4°C with minimal impact on brightness and FRET efficiency /compensation. Some generalizations regarding fluorophore performance after fixation can be made, but clone specific performance should be determined empirically.

Excitation: 488-561 nm; Emission: 607 nm; Laser: Blue Laser, Green Laser, Yellow-Green Laser.

Filtration: 0.2 µm post-manufacturing filtered.

Product Images For CD8a Monoclonal Antibody (RPA-T8), PE-eFluor™ 610, eBioscience™



CD8a Antibody (61-0088-42) in Flow
Staining of normal human peripheral blood cells with Anti-Human CD3 APC (Product # 17-0037-42) and Mouse IgG1 K Isotype Control PE-eFluor® 610 (Product # 61-4714-82) (left) or Anti-Human CD8a PE-eFluor® 610 (right). Cells in the lymphocyte gate were used for analysis.

[View more figures on thermofisher.com](https://thermofisher.com)

Western Blot (1)

| | |
|---|--|
| <p>Development (Cambridge, England)</p> <p>Neural-specific deletion of the focal adhesion adaptor protein paxillin slows migration speed and delays cortical layer formation.</p> <p>"61-0088 was used in Western Blotting to study the roles of paxillin and Hic-5 in cortical development."</p> <p>Authors: Rashid M,Belmont J,Carpenter D,Turner CE,Olson EC</p> | <p>Year 2017</p> <p>Species Mouse</p> <p>Dilution 1:800</p> |
|---|--|

Flow Cytometry (25)

| | |
|--|-----------------------------|
| <p>Frontiers in immunology</p> <p>Bispecific T-Cell Engaging Antibodies Against MUC16 Demonstrate Efficacy Against Ovarian Cancer in Monotherapy and in Combination With PD-1 and VEGF Inhibition.</p> <p>"Published figure using CD8a monoclonal antibody (Product # 61-0088-42) in Flow Cytometry"</p> <p>Authors: Yeku OO,Rao TD,Laster I,Kononenko A,Purdon TJ,Wang P,Cui Z,Liu H,Brentjens RJ,Spriggs D</p> | <p>Year 2021</p> |
| <p>Oncotarget</p> <p>Multipeptide stimulated PBMCs generate T_{EM}/T_{CM} for adoptive cell therapy in multiple myeloma.</p> <p>"Published figure using CD8a monoclonal antibody (Product # 61-0088-42) in Flow Cytometry"</p> <p>Authors: Vardam-Kaur T,Pathangey LB,McCormick DJ,Bergsagel PL,Cohen PA,Gendler SJ</p> | <p>Year 2021</p> |

[View more Flow references on thermofisher.com](#)

More applications with references on thermofisher.com

For Research Use Only. Not for use in diagnostic procedures. Not for resale without express authorization. Products are warranted to operate or perform substantially in conformance with published Product specifications in effect at the time of sale, as set forth in the Production documentation, specifications and/or accompanying package inserts ("Documentation"). No claim of suitability for use in applications regulated by FDA is made. The warranty provided herein is valid only when used by properly trained individuals. Unless otherwise stated in the Documentation, this warranty is limited to one year from date of shipment when the Product is subjected to normal, proper and intended usage. This warranty does not extend to anyone other than the Buyer. Any model or sample furnished to Buyer is merely illustrative of the general type and quality of goods and does not represent that any Product will conform to such model or sample. NO OTHER WARRANTIES, EXPRESS OR IMPLIED, ARE GRANTED INCLUDING WITHOUT LIMITATION, IMPLIED WARRANTIES OF MERCHANTABILITY, FITNESS FOR ANY PARTICULAR PURPOSE, OR NON-INFRINGEMENT. BUYER'S EXCLUSIVE REMEDY FOR NON-CONFORMING PRODUCTS DURING THE WARRANTY PERIOD IS LIMITED TO REPAIR, REPLACEMENT OF OR REFUND FOR THE NON-CONFORMING PRODUCT(S) AT SELLER'S SOLE OPTION. THERE IS NO OBLIGATION TO REPAIR, REPLACE OR REFUND FOR PRODUCTS AS THE RESULT OF (i) ACCIDENT, DISASTER OR EVENT OF FORCE MAJEURE, (ii) MISUSE, FAULT OR NEGLIGENCE OF OR BY BUYER, (iii) USE OF THE PRODUCTS IN A MANNER FOR WHICH THEY WERE NOT DESIGNED, OR (iv) IMPROPER STORAGE AND HANDLING OF THE PRODUCTS. Unless otherwise expressly stated on the Product or in the documentation accompanying the Product, the Product is intended for research only and is not to be used for any other purpose, including without limitation, unauthorized commercial uses, in vitro diagnostic uses, ex vivo or in vivo therapeutic uses, or any type of consumption by or application to human or animals.