

# CD11b Monoclonal Antibody (M1/70), PE-eFluor™ 610, eBioscience™

Product Details	
Size	100 µg
Species Reactivity	Mouse
Published Species	Fish, Mouse, Human
Host/Isotype	Rat / IgG2b, kappa
Recommended Isotype Control	Rat IgG2b kappa Isotype Control (eB149/10H5), PE-eFluor™ 610, eBioscience™
Class	Monoclonal
Type	Antibody
Clone	M1/70
Conjugate	PE-eFluor™ 610
Excitation/Emission Max	565/606 nm
Form	Liquid
Concentration	0.2 mg/mL
Purification	Affinity chromatography
Storage buffer	PBS, pH 7.2
Contains	0.09% sodium azide
Storage conditions	4° C, store in dark, DO NOT FREEZE!
RRID	AB_2574528

Applications	Tested Dilution	Publications
Flow Cytometry (Flow)	0.25 µg/test	234 Publications

## Product Specific Information

**Description:** The M1/70 monoclonal antibody reacts with mouse CD11b, the 165-170 kDa integrin alphaM. CD11b non-covalently associates with CD18 to form alphaM-beta2 integrin (Mac-1) and binds to CD54 (ICAM-1), C3bi, and fibrinogen. Mac-1 is expressed by macrophages, NK cells, granulocytes, activated lymphocytes and mouse B-1 cells in the peritoneal cavity. M1/70 is also cross-reactive to human CD11b, and can be used for the detection of this antigen on human peripheral blood monocytes, granulocytes, and a subset of NK cells. Through interactions with its ligands, CD11b participates in adhesive cell interactions.

**Applications Reported:** This M1/70 antibody has been reported for use in flow cytometric analysis.

**Applications Tested:** This M1/70 antibody has been tested by flow cytometric analysis of mouse bone marrow cells. This can be used at less than or equal to 0.25 µg per test. A test is defined as the amount (µg) of antibody that will stain a cell sample in a final volume of 100 µL. Cell number should be determined empirically but can range from 10<sup>5</sup> to 10<sup>8</sup> cells/test. It is recommended that the antibody be carefully titrated for optimal performance in the assay of interest.

PE-eFluor® 610 can be excited with laser lines from 488-561 nm and emits at 607 nm. We recommend using a 610/20 band pass filter (equivalent to PE-Texas Red®). Please make sure that your instrument is capable of detecting this fluorochrome.

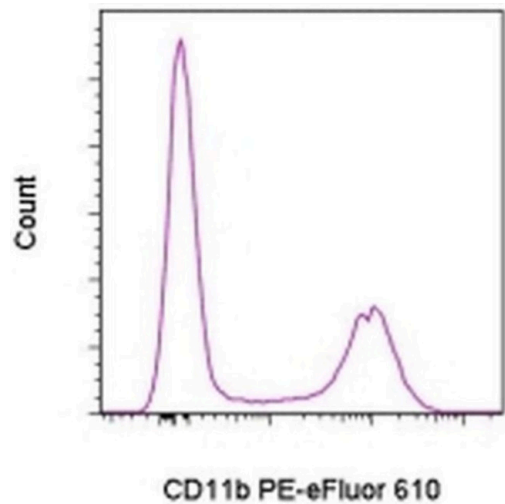
**Light sensitivity:** This tandem dye is sensitive to photo-induced oxidation. Please protect this vial and stained samples from light.

Fixation: Samples can be stored in IC Fixation Buffer (cat. 00-8222) (100 µL of cell sample + 100 µL of IC Fixation Buffer) or 1-step Fix/Lyse Solution (cat. 00-5333) for up to 3 days in the dark at 4°C with minimal impact on brightness and FRET efficiency /compensation. Some generalizations regarding fluorophore performance after fixation can be made, but clone specific performance should be determined empirically.

Excitation: 488-561 nm; Emission: 607 nm; Laser: Blue Laser, Green Laser, Yellow-Green Laser.

Filtration: 0.2 µm post-manufacturing filtered.

**Product Images For CD11b Monoclonal Antibody (M1/70), PE-eFluor™ 610, eBioscience™**



**CD11b Antibody (61-0112-82) in Flow**  
Staining of C57Bl/6 bone marrow cells with 0.125 µg of Anti-Mouse CD11b PE-eFluor® 610. Cells in the large scatter population were used for analysis.

[View more figures on thermofisher.com](https://thermofisher.com)

Flow Cytometry (234)

Materials today. Bio	Year 2023
<b>Oxygen-carrying nanoplatfrom to reprogram tumor immunosuppressive microenvironment and enhance photothermal-immunotherapy.</b>	
"Published figure using CD11b monoclonal antibody (Product # 61-0112-82) in Flow Cytometry"	
Authors: Huang J,Leng X,Jiang T,Xu L,Zheng J,Fang M,Wang J,Wang Z,Zhang L	
Cancers	Year 2023
<b>Non-Oncogene Addiction of <i>KRAS</i>-Mutant Cancers to IL-1 via Versican and Mononuclear IKK.</b>	
"Published figure using CD11b monoclonal antibody (Product # 61-0112-82) in Flow Cytometry"	
Authors: Spella M,Ntaliarda G,Skiadas G,Lamort AS,Vreka M,Marazioti A,Lilis I,Bouloukou E,Giotopoulou GA,Pepe MAA,Weiss SAI,Petrera A,Hauck SM,Koch I,Lindner M,Hatz RA,Behr J,Arendt KAM,Giopanou I,Brunn D,Savai R, Jenne DE,de Château M,Yull FE,Blackwell TS,Stathopoulos GT	

[View more Flow references on thermofisher.com](#)

More applications with references on thermofisher.com

For Research Use Only. Not for use in diagnostic procedures. Not for resale without express authorization. Products are warranted to operate or perform substantially in conformance with published Product specifications in effect at the time of sale, as set forth in the Production documentation, specifications and/or accompanying package inserts ("Documentation"). No claim of suitability for use in applications regulated by FDA is made. The warranty provided herein is valid only when used by properly trained individuals. Unless otherwise stated in the Documentation, this warranty is limited to one year from date of shipment when the Product is subjected to normal, proper and intended usage. This warranty does not extend to anyone other than the Buyer. Any model or sample furnished to Buyer is merely illustrative of the general type and quality of goods and does not represent that any Product will conform to such model or sample. NO OTHER WARRANTIES, EXPRESS OR IMPLIED, ARE GRANTED INCLUDING WITHOUT LIMITATION, IMPLIED WARRANTIES OF MERCHANTABILITY, FITNESS FOR ANY PARTICULAR PURPOSE, OR NON INFRINGEMENT. BUYER'S EXCLUSIVE REMEDY FOR NON-CONFORMING PRODUCTS DURING THE WARRANTY PERIOD IS LIMITED TO REPAIR, REPLACEMENT OF OR REFUND FOR THE NON-CONFORMING PRODUCT(S) AT SELLER'S SOLE OPTION. THERE IS NO OBLIGATION TO REPAIR, REPLACE OR REFUND FOR PRODUCTS AS THE RESULT OF (I) ACCIDENT, DISASTER OR EVENT OF FORCE MAJEURE, (II) MISUSE, FAULT OR NEGLIGENCE OF OR BY BUYER, (III) USE OF THE PRODUCTS IN A MANNER FOR WHICH THEY WERE NOT DESIGNED, OR (IV) IMPROPER STORAGE AND HANDLING OF THE PRODUCTS. Unless otherwise expressly stated on the Product or in the documentation accompanying the Product, the Product is intended for research only and is not to be used for any other purpose, including without limitation, unauthorized commercial uses, in vitro diagnostic uses, ex vivo or in vivo therapeutic uses, or any type of consumption by or application to human or animals.