

# CD24 Monoclonal Antibody (M1/69), PE-eFluor 610, eBioscience™

Product Details	
Size	100 µg
Species Reactivity	Mouse
Host/Isotope	Rat / IgG2b, kappa
Recommended Isotype Control	Rat IgG2b kappa Isotype Control (eB149/10H5), PE-eFluor 610, eBioscience™
Class	Monoclonal
Type	Antibody
Clone	M1/69
Conjugate	PE-eFluor® 610
Form	Liquid
Concentration	0.2 mg/ml
Purification	Affinity chromatography
Storage buffer	PBS, pH 7.2
Contains	0.09% sodium azide
Storage Conditions	4° C, store in dark, DO NOT FREEZE!

Applications	Tested	Dilution	Published
Flow Cytometry (Flow)	✓	0.06 µg/test	

## Product Specific Information

Description: The M1/69 monoclonal antibody reacts with the mouse CD24 molecule, also known as Heat Stable Antigen (HSA). This 35-50 kDa molecule is anchored in the plasma membrane via phosphatidylinositol and is expressed by erythrocytes, thymocytes, peripheral lymphocytes and myeloid lineage. CD24 is a variably glycosylated molecule resulting in heterogeneity of molecular mass of this antigen on cells of different lineages and antibodies to CD24 exhibit subtle differences in staining level on lymphocyte populations. The expression of CD24 has been used to resolve stages of B lymphopoiesis in mouse bone marrow. It has been reported that P-selectin (CD62P) binds to CD24.

Applications Reported: This M1/69 antibody has been reported for use in flow cytometric analysis.

Applications Tested: This M1/69 antibody has been tested by flow cytometric analysis of mouse splenocytes. This may be used at less than or equal to 0.06 µg per test. A test is defined as the amount (µg) of antibody that will stain a cell sample in a final volume of 100 µL. Cell number should be determined empirically but can range from 10<sup>5</sup> to 10<sup>8</sup> cells/test. It is recommended that the antibody be carefully titrated for optimal performance in the assay of interest.

PE-eFluor 610 can be excited with laser lines from 488-561 nm and emits at 607 nm. We recommend using a 610/20 band pass filter (equivalent to PE-Texas Red). Please make sure that your instrument is capable of detecting this fluorochrome.

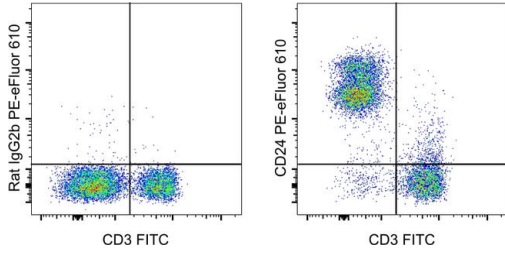
Light sensitivity: This tandem dye is sensitive to photo-induced oxidation. Please protect this vial and stained samples from light.

Fixation: Samples can be stored in IC Fixation Buffer (Product # 00-8222-49) (100 µL of cell sample + 100 µL of IC Fixation Buffer) or 1-step Fix/Lyse Solution (Product # 00-5333-57) for up to 3 days in the dark at 4°C with minimal impact on brightness and FRET efficiency/compensation. Some generalizations regarding fluorophore performance after fixation can be made, but clone specific

performance should be determined empirically.

Excitation: 488-561 nm; Emission: 607 nm; Laser: Blue Laser, Green Laser, Yellow-Green Laser

## Product Images For CD24 Monoclonal Antibody (M1/69), PE-eFluor 610, eBioscience™



### CD24 Antibody (61-0242-82) in Flow

C57BL/6 mouse splenocytes were stained with CD3 Monoclonal Antibody, FITC (Product # 11-0031-82) and 0.03 µg of Rat IgG2b kappa Isotype Control, PE-eFluor 610 (Product # 61-4031-80) (left) or 0.03 µg of CD24 Monoclonal Antibody, PE-eFluor 610 (right). Cells in the lymphocyte gate were used for analysis.

For Research Use Only. Not for use in diagnostic procedures. Not for resale without express authorization. Products are warranted to operate or perform substantially in conformance with published Product specifications in effect at the time of sale, as set forth in the Production documentation, specifications and/or accompanying package inserts ("Documentation"). No claim of suitability for use in applications regulated by FDA is made. The warranty provided herein is valid only when used by properly trained individuals. Unless otherwise stated in the Documentation, this warranty is limited to one year from date of shipment when the Product is subjected to normal, proper and intended usage. This warranty does not extend to anyone other than the Buyer. Any model or sample furnished to Buyer is merely illustrative of the general type and quality of goods and does not represent that any Product will conform to such model or sample. NO OTHER WARRANTIES, EXPRESS OR IMPLIED, ARE GRANTED INCLUDING WITHOUT LIMITATION, IMPLIED WARRANTIES OF MERCHANTABILITY, FITNESS FOR ANY PARTICULAR PURPOSE, OR NON INFRINGEMENT. BUYER'S EXCLUSIVE REMEDY FOR NON-CONFORMING PRODUCTS DURING THE WARRANTY PERIOD IS LIMITED TO REPAIR, REPLACEMENT OF OR REFUND FOR THE NON-CONFORMING PRODUCT(S) AT SELLER'S SOLE OPTION. THERE IS NO OBLIGATION TO REPAIR, REPLACE OR REFUND FOR PRODUCTS AS THE RESULT OF (I) ACCIDENT, DISASTER OR EVENT OF FORCE MAJEURE, (II) MISUSE, FAULT OR NEGLIGENCE OF OR BY BUYER, (III) USE OF THE PRODUCTS IN A MANNER FOR WHICH THEY WERE NOT DESIGNED, OR (IV) IMPROPER STORAGE AND HANDLING OF THE PRODUCTS. Unless otherwise expressly stated on the Product or in the documentation accompanying the Product, the Product is intended for research only and is not to be used for any other purpose, including without limitation, unauthorized commercial uses, in vitro diagnostic uses, ex vivo or in vivo therapeutic uses, or any type of consumption by or application to human or animals.