

# CD45RA Monoclonal Antibody (HI100), PE-eFluor™ 610, eBioscience™

Product Details	
Size	100 Tests
Species Reactivity	Human
Published Species	Human
Host/Isotype	Mouse / IgG2b, kappa
Recommended Isotype Control	Mouse IgG2b kappa Isotype Control (eBMG2b), PE-eFluor™ 610, eBioscience™
Class	Monoclonal
Type	Antibody
Clone	HI100
Conjugate	PE-eFluor™ 610
Excitation/Emission Max	565/606 nm
Form	Liquid
Concentration	5 µL/Test
Purification	Affinity chromatography
Storage buffer	PBS, pH 7.2, with 0.2% BSA
Contains	0.09% sodium azide
Storage conditions	4° C, store in dark, DO NOT FREEZE!
RRID	AB_2574564

Applications	Tested Dilution	Publications
Flow Cytometry (Flow)	5 µL (0.03 µg)/test	12 Publications

## Product Specific Information

**Description:** The HI100 monoclonal antibody reacts with human CD45RA, a 220 kDa molecule expressed by subpopulations of CD4+ peripheral T lymphocytes, CD8+ peripheral T lymphocytes, and B cells. The CD45RA+ T cell populations are mainly naive/virgin allowing the use of HI100 mAb as a phenotypic marker to discriminate T cell subsets.

**Applications Reported:** This HI100 antibody has been reported for use in flow cytometric analysis.

**Applications Tested:** This HI100 antibody has been pre-titrated and tested by flow cytometric analysis of normal human peripheral blood cells. This can be used at 5 µL (0.03 µg) per test. A test is defined as the amount (µg) of antibody that will stain a cell sample in a final volume of 100 µL. Cell number should be determined empirically but can range from 10<sup>5</sup> to 10<sup>8</sup> cells/test.

PE-eFluor® 610 can be excited with laser lines from 488-561 nm and emits at 607 nm. We recommend using a 610/20 band pass filter (equivalent to PE-Texas Red®). Please make sure that your instrument is capable of detecting this fluorochrome.

**Light sensitivity:** This tandem dye is sensitive to photo-induced oxidation. Please protect this vial and stained samples from light.

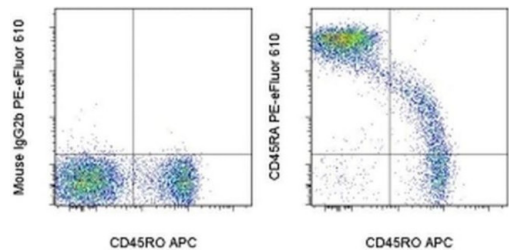
**Fixation:** Samples can be stored in IC Fixation Buffer (cat. 00-8222) (100 µL of cell sample + 100 µL of IC Fixation Buffer) or 1-step Fix/Lyse Solution (cat. 00-5333) for up to 3 days in the dark at 4°C with minimal impact on brightness and FRET efficiency

/compensation. Some generalizations regarding fluorophore performance after fixation can be made, but clone specific performance should be determined empirically.

Excitation: 488-561 nm; Emission: 607 nm; Laser: Blue Laser, Green Laser, Yellow-Green Laser.

Filtration: 0.2 µm post-manufacturing filtered.

Product Images For CD45RA Monoclonal Antibody (HI100), PE-eFluor™ 610, eBioscience™



**CD45RA Antibody (61-0458-42) in Flow**  
Staining of normal human peripheral blood cells with Anti-Human CD45RO APC (Product # 17-0457-42) and Mouse IgG2b K Isotype Control PE-eFluor® 610 (Product # 61-4732-82) (left) or Anti-Human CD45RA PE-eFluor® 610 (right). Cells in the lymphocyte gate were used for analysis.

[View more figures on thermofisher.com](#)

12 References

Flow Cytometry (12)

Oncoimmunology	Year 2022
<b>TIGIT expressing CD4+T cells represent a tumor-supportive T cell subset in chronic lymphocytic leukemia.</b>	
"Published figure using CD45RA monoclonal antibody (Product # 61-0458-42) in Flow Cytometry"	
Authors: Catakovic K,Gassner FJ,Ratswohl C,Zaborsky N,Rebhandl S,Schubert M,Steiner M,Gutjahr JC,Pleyer L,Egle A,Hartmann TN,Greil R,Geisberger R	
Frontiers in immunology	Year 2021
<b>Differences in Maturation Status and Immune Phenotypes of Circulating Helios<sup>+</sup> and Helios<sup>-</sup> Tregs and Their Disrupted Correlations With Monocyte Subsets in Autoantibody-Positive T1D Individuals.</b>	
"Published figure using CD45RA monoclonal antibody (Product # 61-0458-42) in Flow Cytometry"	
Authors: Zhang Y,Zhang J,Shi Y,Shen M,Lv H,Chen S,Feng Y,Chen H,Xu X,Yang T,Xu K	

[View more Flow references on thermofisher.com](#)

More applications with references on thermofisher.com

For Research Use Only. Not for use in diagnostic procedures. Not for resale without express authorization. Products are warranted to operate or perform substantially in conformance with published Product specifications in effect at the time of sale, as set forth in the Production documentation, specifications and/or accompanying package inserts ("Documentation"). No claim of suitability for use in applications regulated by FDA is made. The warranty provided herein is valid only when used by properly trained individuals. Unless otherwise stated in the Documentation, this warranty is limited to one year from date of shipment when the Product is subjected to normal, proper and intended usage. This warranty does not extend to anyone other than the Buyer. Any model or sample furnished to Buyer is merely illustrative of the general type and quality of goods and does not represent that any Product will conform to such model or sample. NO OTHER WARRANTIES, EXPRESS OR IMPLIED, ARE GRANTED INCLUDING WITHOUT LIMITATION, IMPLIED WARRANTIES OF MERCHANTABILITY, FITNESS FOR ANY PARTICULAR PURPOSE, OR NON INFRINGEMENT. BUYER'S EXCLUSIVE REMEDY FOR NON-CONFORMING PRODUCTS DURING THE WARRANTY PERIOD IS LIMITED TO REPAIR, REPLACEMENT OF OR REFUND FOR THE NON-CONFORMING PRODUCT(S) AT SELLER'S SOLE OPTION. THERE IS NO OBLIGATION TO REPAIR, REPLACE OR REFUND FOR PRODUCTS AS THE RESULT OF (I) ACCIDENT, DISASTER OR EVENT OF FORCE MAJEURE, (II) MISUSE, FAULT OR NEGLIGENCE OF OR BY BUYER, (III) USE OF THE PRODUCTS IN A MANNER FOR WHICH THEY WERE NOT DESIGNED, OR (IV) IMPROPER STORAGE AND HANDLING OF THE PRODUCTS. Unless otherwise expressly stated on the Product or in the documentation accompanying the Product, the Product is intended for research only and is not to be used for any other purpose, including without limitation, unauthorized commercial uses, in vitro diagnostic uses, ex vivo or in vivo therapeutic uses, or any type of consumption by or application to human or animals.