

CD85j (ILT2) Monoclonal Antibody (HP-F1), PE-eFluor 610, eBioscience™

Product Details	
Size	100 Tests
Species Reactivity	Human
Host/Isotope	Mouse / IgG1, kappa
Recommended Isotype Control	Mouse IgG1 kappa Isotype Control (P3.6.2.8.1), PE-eFluor 610, eBioscience™
Class	Monoclonal
Type	Antibody
Clone	HP-F1
Conjugate	PE-eFluor® 610
Form	Liquid
Concentration	5 µL/Test
Purification	Affinity chromatography
Storage buffer	PBS, pH 7.2, with 0.2% BSA
Contains	0.09% sodium azide
Storage Conditions	4° C, store in dark, DO NOT FREEZE!
RRID	AB_2802393

Applications	Tested Dilution	Publications
Flow Cytometry (Flow)	5 µL (0.125 µg)/test	-

Product Specific Information

Description: The monoclonal antibody HP-F1 recognizes CD85j, also known as ILT2, LILRB1, and LIR1. CD85j is a member of the ILT (immunoglobulin-like transcript)/LIR (leukocyte Ig-like receptor)/MIR (monocyte Ig-like receptor) family. CD85j is a single transmembrane glycoprotein with a long cytoplasmic domain containing 4 ITIMs which signal through interactions with SHP-1. Expression is found on myeloid cells (monocytes and dendritic cells) and some lymphoid cells including, subsets of NK, T and B cells. Expression has been correlated with leukemias such as ALL and CLL. Expression on CD8+ cells correlates with effector cell function and plays an important role in viral infections, including HIV, Epstein Barr and CMV. The ligands for CD85j are MHC Class I molecules such as HLA-G, A, F, B27, E and F.

Applications Reported: This HP-F1 antibody has been reported for use in flow cytometric analysis.

Applications Tested: This HP-F1 antibody has been pre-diluted and tested by flow cytometric analysis of normal human peripheral blood cells. This may be used at 5 µL (0.125 µg) per test. A test is defined as the amount (µg) of antibody that will stain a cell sample in a final volume of 100 µL. Cell number should be determined empirically but can range from 10⁵ to 10⁸ cells/test.

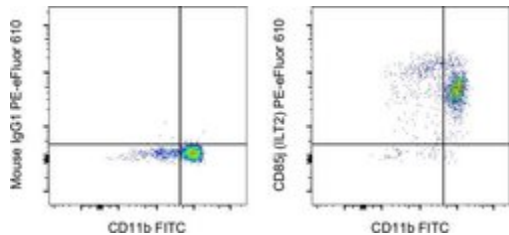
PE-eFluor 610 can be excited with laser lines from 488-561 nm and emits at 607 nm. We recommend using a 610/20 band pass filter (equivalent to PE-Texas Red). Please make sure that your instrument is capable of detecting this fluorochrome.

Light sensitivity: This tandem dye is sensitive to photo-induced oxidation. Please protect this vial and stained samples from light.

Fixation: Samples can be stored in IC Fixation Buffer (Product # 00-8222-49) (100 μ L of cell sample + 100 μ L of IC Fixation Buffer) or 1-step Fix/Lyse Solution (Product # 00-5333-57) for up to 3 days in the dark at 4°C with minimal impact on brightness and FRET efficiency/compensation. Some generalizations regarding fluorophore performance after fixation can be made, but clone specific performance should be determined empirically.

Excitation: 488-561 nm; Emission: 607 nm; Laser: Blue Laser, Green Laser, Yellow-Green Laser

Product Images For CD85j (ILT2) Monoclonal Antibody (HP-F1), PE-eFluor 610, eBioscience™



CD85j (ILT2) Antibody (61-5129-42) in Flow

Normal human peripheral blood cells were stained with CD11b Monoclonal Antibody, FITC (Product # 11-0118-42) and Mouse IgG1 kappa Isotype Control, PE-eFluor 610 (Product # 61-4714-82) (left) or CD85j (ILT2) Monoclonal Antibody, PE-eFluor 610 (right). Cells in the monocyte gate were used for analysis.

For Research Use Only. Not for use in diagnostic procedures. Not for resale without express authorization. Products are warranted to operate or perform substantially in conformance with published Product specifications in effect at the time of sale, as set forth in the Production documentation, specifications and/or accompanying package inserts ("Documentation"). No claim of suitability for use in applications regulated by FDA is made. The warranty provided herein is valid only when used by properly trained individuals. Unless otherwise stated in the Documentation, this warranty is limited to one year from date of shipment when the Product is subjected to normal, proper and intended usage. This warranty does not extend to anyone other than the Buyer. Any model or sample furnished to Buyer is merely illustrative of the general type and quality of goods and does not represent that any Product will conform to such model or sample. NO OTHER WARRANTIES, EXPRESS OR IMPLIED, ARE GRANTED INCLUDING WITHOUT LIMITATION, IMPLIED WARRANTIES OF MERCHANTABILITY, FITNESS FOR ANY PARTICULAR PURPOSE, OR NON INFRINGEMENT. BUYER'S EXCLUSIVE REMEDY FOR NON-CONFORMING PRODUCTS DURING THE WARRANTY PERIOD IS LIMITED TO REPAIR, REPLACEMENT OF OR REFUND FOR THE NON-CONFORMING PRODUCT(S) AT SELLER'S SOLE OPTION. THERE IS NO OBLIGATION TO REPAIR, REPLACE OR REFUND FOR PRODUCTS AS THE RESULT OF (I) ACCIDENT, DISASTER OR EVENT OF FORCE MAJEURE, (II) MISUSE, FAULT OR NEGLIGENCE OF OR BY BUYER, (III) USE OF THE PRODUCTS IN A MANNER FOR WHICH THEY WERE NOT DESIGNED, OR (IV) IMPROPER STORAGE AND HANDLING OF THE PRODUCTS. Unless otherwise expressly stated on the Product or in the documentation accompanying the Product, the Product is intended for research only and is not to be used for any other purpose, including without limitation, unauthorized commercial uses, in vitro diagnostic uses, ex vivo or in vivo therapeutic uses, or any type of consumption by or application to human or animals.