

# CD1d Monoclonal Antibody (1B1), Super Bright™ 436, eBioscience™

| Product Details             |   |
|-----------------------------|---|
| Size                        | 25 µg   |
| Species Reactivity          | Mouse   |
| Host/Isotype                | Rat / IgG2b, kappa  |
| Recommended Isotype Control | Rat IgG2b kappa Isotype Control (eB149/10H5), Super Bright™ 436, eBioscience™ |
| Class                       | Monoclonal  |
| Type                        | Antibody  |
| Clone                       | 1B1   |
| Conjugate                   | Super Bright™ 436   |
| Form                        | Liquid  |
| Concentration               | 0.2 mg/mL   |
| Purification                | Affinity chromatography   |
| Storage buffer              | PBS, pH 7.2, with BSA   |
| Contains                    | 0.09% sodium azide  |
| Storage conditions          | 4° C, store in dark, DO NOT FREEZE!   |
| RRID                        | AB_2744761  |

| Applications          | Tested Dilution | Publications |
|-----------------------|-----------------|--------------|
| Flow Cytometry (Flow) | 0.5 µg/test     | -            |

## Product Specific Information

**Description:** The 1B1 monoclonal antibody reacts with mouse CD1d, a 48 kDa glycoprotein with structural homology to MHC class I molecules. While similar to MHC Class I, CD1d associates with beta2m, functionally CD1d is similar to MHC Class II. 1B1 detects CD1d at varying levels on mouse leukocytes. 1B1 detects beta2m associated CD1d.

**Applications Reported:** The 1B1 antibody has been reported for use in flow cytometric analysis.

**Applications Tested:** The 1B1 antibody has been tested by flow cytometric analysis of mouse splenocytes. This can be used at less than or equal to 0.5 µg per test. A test is defined as the amount (µg) of antibody that will stain a cell sample in a final volume of 100 µL. Cell number should be determined empirically but can range from 10<sup>5</sup> to 10<sup>8</sup> cells/test. It is recommended that the antibody be carefully titrated for optimal performance in the assay of interest.

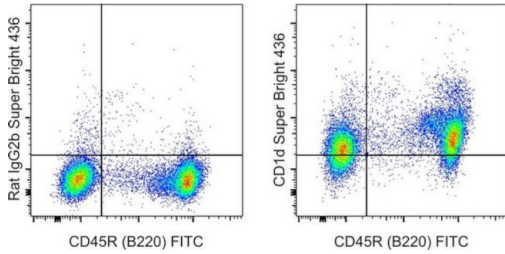
Super Bright 436 can be excited with the violet laser line (405 nm) and emits at 436 nm. We recommend using a 450/50 bandpass filter, or equivalent. Please make sure that your instrument is capable of detecting this fluorochrome.

When using two or more Super Bright dye-conjugated antibodies in a staining panel, it is recommended to use Super Bright Complete Staining Buffer (Product # SB-4401) to minimize any non-specific polymer interactions. Please refer to the datasheet for Super Bright Staining Buffer for more information.

Excitation: 405 nm; Emission: 436 nm; Laser: Violet Laser

Super Bright Polymer Dyes are sold under license from Becton, Dickinson and Company.

## Product Images For CD1d Monoclonal Antibody (1B1), Super Bright™ 436, eBioscience™



### CD1d Antibody (62-0011-80) in Flow

C57BL/6 mouse splenocytes were stained with CD45R (B220) Monoclonal Antibody, FITC (Product # 11-0452-82) and 0.25 µg of Rat IgG2b kappa Isotype Control, Super Bright 436 (Product # 62-4031-82) (left) or 0.25 µg of CD1d Monoclonal Antibody, Super Bright 436 (right). Cells in the lymphocyte gate were used for analysis.

For Research Use Only. Not for use in diagnostic procedures. Not for resale without express authorization. Products are warranted to operate or perform substantially in conformance with published Product specifications in effect at the time of sale, as set forth in the Production documentation, specifications and/or accompanying package inserts ("Documentation"). No claim of suitability for use in applications regulated by FDA is made. The warranty provided herein is valid only when used by properly trained individuals. Unless otherwise stated in the Documentation, this warranty is limited to one year from date of shipment when the Product is subjected to normal, proper and intended usage. This warranty does not extend to anyone other than the Buyer. Any model or sample furnished to Buyer is merely illustrative of the general type and quality of goods and does not represent that any Product will conform to such model or sample. NO OTHER WARRANTIES, EXPRESS OR IMPLIED, ARE GRANTED INCLUDING WITHOUT LIMITATION, IMPLIED WARRANTIES OF MERCHANTABILITY, FITNESS FOR ANY PARTICULAR PURPOSE, OR NON INFRINGEMENT. BUYER'S EXCLUSIVE REMEDY FOR NON-CONFORMING PRODUCTS DURING THE WARRANTY PERIOD IS LIMITED TO REPAIR, REPLACEMENT OF OR REFUND FOR THE NON-CONFORMING PRODUCT(S) AT SELLER'S SOLE OPTION. THERE IS NO OBLIGATION TO REPAIR, REPLACE OR REFUND FOR PRODUCTS AS THE RESULT OF (I) ACCIDENT, DISASTER OR EVENT OF FORCE MAJEURE, (II) MISUSE, FAULT OR NEGLIGENCE OF OR BY BUYER, (III) USE OF THE PRODUCTS IN A MANNER FOR WHICH THEY WERE NOT DESIGNED, OR (IV) IMPROPER STORAGE AND HANDLING OF THE PRODUCTS. Unless otherwise expressly stated on the Product or in the documentation accompanying the Product, the Product is intended for research only and is not to be used for any other purpose, including without limitation, unauthorized commercial uses, in vitro diagnostic uses, ex vivo or in vivo therapeutic uses, or any type of consumption by or application to human or animals.