

CD25 Monoclonal Antibody (P4A10), Super Bright™ 436, eBioscience™

Product Details	
Size	100 Tests
Species Reactivity	Dog
Host/Isotype	Mouse / IgG1, kappa
Recommended Isotype Control	Mouse IgG1 kappa Isotype Control (P3.6.2.8.1), Super Bright™ 436, eBioscience™
Class	Monoclonal
Type	Antibody
Clone	P4A10
Conjugate	Super Bright™ 436
Excitation/Emission Max	413/431 nm
Form	Liquid
Concentration	5 µL/Test
Purification	Affinity chromatography
Storage buffer	PBS, pH 7.2, with BSA
Contains	0.09% sodium azide
Storage conditions	4° C, store in dark, DO NOT FREEZE!
RRID	AB_2734933

Applications	Tested Dilution	Publications
Flow Cytometry (Flow)	5 µL (0.25 µg)/test	1 Publication

Product Specific Information

Description: This P4A10 monoclonal antibody reacts with canine CD25, the 55-kDa interleukin-2 receptor alpha (IL-2Ralpha) chain. As in humans and mice, CD25 in dogs is expressed by early T and B lineage progenitors as well as by activated mature T and B lymphocytes. CD25 associates with the IL-2R beta (CD122) and gamma (CD132) chains to form the high-affinity IL-2 receptor. On its own, CD25 binds IL-2 with low affinity. Along with CD4 and Foxp3, CD25 is a major marker used to define regulatory T cells.

The P4A10 antibody has been reported to recognize the same epitope as the anti-human CD25 monoclonal antibody ACT-1, but with greater affinity.

Applications Reported: This P4A10 antibody has been reported for use in flow cytometric analysis.

Applications Tested: This P4A10 antibody has been pre-titrated and tested by flow cytometric analysis of normal canine peripheral blood cells. This can be used at 5 µL (0.25 µg) per test. A test is defined as the amount (µg) of antibody that will stain a cell sample in a final volume of 100 µL. Cell number should be determined empirically but can range from 10⁵ to 10⁸ cells/test.

Super Bright 436 can be excited with the violet laser line (405 nm) and emits at 436 nm. We recommend using a 450/50 bandpass filter, or equivalent. Please make sure that your instrument is capable of detecting this fluorochrome.

When using two or more Super Bright dye-conjugated antibodies in a staining panel, it is recommended to use Super Bright Complete Staining Buffer (Product # SB-4401) to minimize any non-specific polymer interactions. Please refer to the datasheet

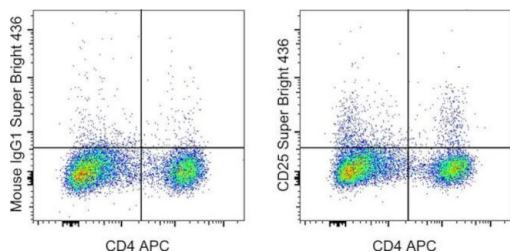
for Super Bright Staining Buffer for more information.

Fixation: Samples can be stored in IC Fixation Buffer (Product # 00-8222) (100 μ L of cell sample + 100 μ L of IC Fixation Buffer) or 1-step Fix/Lyse Solution (Product # 00-5333) for up to 3 days in the dark at 4°C with minimal impact on brightness and FRET efficiency/compensation. Some generalizations regarding fluorophore performance after fixation can be made, but clone specific performance should be determined empirically.

Excitation: 405 nm; Emission: 436 nm; Laser: Violet Laser

Super Bright Polymer Dyes are sold under license from Becton, Dickinson and Company.

Product Images For CD25 Monoclonal Antibody (P4A10), Super Bright™ 436, eBioscience™



CD25 Antibody (62-0250-42) in Flow

Staining of normal canine peripheral blood cells with CD4 Monoclonal Antibody, APC (Product # 17-5040-42) and Mouse IgG1 K Isotype Control, Super Bright 436 (Product # 62-4714-82) (left) or CD25 Monoclonal Antibody, Super Bright 436 (right). Viable cells, determined by 7-AAD (Product # 00-6993-50) were used for analysis.

1 Reference

Flow Cytometry (1)

Oncoimmunology

Establishing a model system for evaluating CAR T cell therapy using dogs with spontaneous diffuse large B cell lymphoma.

"Published figure using CD25 monoclonal antibody (Product # 62-0250-42) in Flow Cytometry"

Authors: Panjwani MK, Atherton MJ, MaloneyHuss MA, Haran KP, Xiong A, Gupta M, Kulikovsaya I, Lacey SF, Mason NJ

Year
2021

For Research Use Only. Not for use in diagnostic procedures. Not for resale without express authorization. Products are warranted to operate or perform substantially in conformance with published Product specifications in effect at the time of sale, as set forth in the Production documentation, specifications and/or accompanying package inserts ("Documentation"). No claim of suitability for use in applications regulated by FDA is made. The warranty provided herein is valid only when used by properly trained individuals. Unless otherwise stated in the Documentation, this warranty is limited to one year from date of shipment when the Product is subjected to normal, proper and intended usage. This warranty does not extend to anyone other than the Buyer. Any model or sample furnished to Buyer is merely illustrative of the general type and quality of goods and does not represent that any Product will conform to such model or sample. NO OTHER WARRANTIES, EXPRESS OR IMPLIED, ARE GRANTED INCLUDING WITHOUT LIMITATION, IMPLIED WARRANTIES OF MERCHANTABILITY, FITNESS FOR ANY PARTICULAR PURPOSE, OR NON INFRINGEMENT. BUYER'S EXCLUSIVE REMEDY FOR NON-CONFORMING PRODUCTS DURING THE WARRANTY PERIOD IS LIMITED TO REPAIR, REPLACEMENT OF OR REFUND FOR THE NON-CONFORMING PRODUCT(S) AT SELLER'S SOLE OPTION. THERE IS NO OBLIGATION TO REPAIR, REPLACE OR REFUND FOR PRODUCTS AS THE RESULT OF (I) ACCIDENT, DISASTER OR EVENT OF FORCE MAJEURE, (II) MISUSE, FAULT OR NEGLIGENCE OF OR BY BUYER, (III) USE OF THE PRODUCTS IN A MANNER FOR WHICH THEY WERE NOT DESIGNED, OR (IV) IMPROPER STORAGE AND HANDLING OF THE PRODUCTS. Unless otherwise expressly stated on the Product or in the documentation accompanying the Product, the Product is intended for research only and is not to be used for any other purpose, including without limitation, unauthorized commercial uses, in vitro diagnostic uses, ex vivo or in vivo therapeutic uses, or any type of consumption by or application to human or animals.