

CD66a (CEACAM1) Monoclonal Antibody (CC1), Super Bright™ 436, eBioscience™

Product Details	
Size	50 µg
Species Reactivity	Mouse
Host/Isotype	Mouse / IgG1, kappa
Recommended Isotype Control	Mouse IgG1 kappa Isotype Control (P3.6.2.8.1), Super Bright™ 436, eBioscience™
Class	Monoclonal
Type	Antibody
Clone	CC1
Conjugate	Super Bright™ 436
Excitation/Emission Max	413/431 nm
Form	Liquid
Concentration	0.2 mg/mL
Purification	Affinity chromatography
Storage buffer	PBS, pH 7.2, with BSA
Contains	0.09% sodium azide
Storage conditions	4° C, store in dark, DO NOT FREEZE!
RRID	AB_2784813

Applications	Tested Dilution	Publications
Western Blot (WB)	-	1 Publication
Flow Cytometry (Flow)	0.125 µg/test	1 Publication

Product Specific Information

Description: The monoclonal antibody CC1 recognizes CD66a, also known as carcinoembryonic antigen-related cell adhesion molecule 1 (CEACAM1), biliary glycoprotein, and BPG. Expression of CD66a is found on brush borders, epithelial, and endothelial cells. In hematopoietic cells expression is found abundantly on B cells, as well as some NKs, monocytes, DCs, and granulocytes. Although low levels of mRNA have been identified in T cells in humans, resting mouse T lymphocytes are not reported to express CD66a, as confirmed by lack of staining with CC1 antibody. In humans, expression levels of CD66a have been used to identify malignancies. CD66a plays a key role as a regulator of BCR activation of B lymphocytes.

An alternate allele, CEACAM1b, is expressed in SJL mice; therefore, CC1 does not stain SJL tissue. The monoclonal CC1 has been shown to block viral infection and also enhance B cell proliferation when combined with IgM crosslinking.

Applications Reported: This CC1 antibody has been reported for use in flow cytometric analysis.

Applications Tested: This CC1 antibody has been tested by flow cytometric analysis of mouse splenocytes. This may be used at less than or equal to 0.125 µg per test. A test is defined as the amount (µg) of antibody that will stain a cell sample in a final volume of 100 µL. Cell number should be determined empirically but can range from 10⁵ to 10⁸ cells/test. It is recommended that the antibody be carefully titrated for optimal performance in the assay of interest.

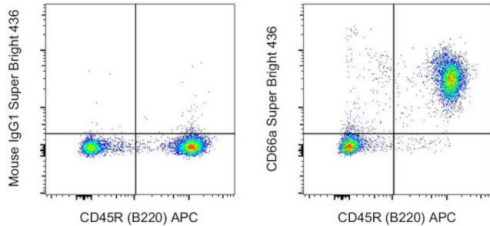
Super Bright 436 can be excited with the violet laser line (405 nm) and emits at 436 nm. We recommend using a 450/50 bandpass filter, or equivalent. Please make sure that your instrument is capable of detecting this fluorochrome.

When using two or more Super Bright dye-conjugated antibodies in a staining panel, it is recommended to use Super Bright Complete Staining Buffer (Product # SB-4401) to minimize any non-specific polymer interactions. Please refer to the datasheet for Super Bright Staining Buffer for more information.

Excitation: 405 nm; Emission: 436 nm; Laser: Violet Laser

Super Bright Polymer Dyes are sold under license from Becton, Dickinson and Company.

Product Images For CD66a (CEACAM1) Monoclonal Antibody (CC1), Super Bright™ 436, eBioscience™



CD66a (CEACAM1) Antibody (62-0661-81) in Flow

C57BL/6 mouse splenocytes were stained with CD45R (B220) Monoclonal Antibody, APC (Product # 17-0452-82) and 0.06 µg of Mouse IgG1 kappa Isotype Control, Super Bright 436 (Product # 62-4714-82) (left) or 0.06 µg of CD66a Monoclonal Antibody, Super Bright 436 (right). Cells in the lymphocyte gate were used for analysis.

2 References

Western Blot (1)

Nutrients

Short-Term Calorie Restriction Maintains Plasma Insulin Concentrations along with a Reduction in Hepatic Insulin-Degrading Enzyme Levels in db/db Mice.

"Published figure using CD66a (CEACAM1) monoclonal antibody (Product # 62-0661-81) in Western Blot"

Authors: Nonaka Y, Takeda R, Kano Y, Hoshino D

Year
2021

Flow Cytometry (1)

Cancers

TIM-3 Expression Is Downregulated on Human NK Cells in Response to Cancer Targets in Synergy with Activation.

"Published figure using CD66a (CEACAM1) monoclonal antibody (Product # 62-0661-81) in Flow Cytometry"

Authors: Dao TN, Utturkar S, Atallah Lanman N, Matosevic S

Year
2020

For Research Use Only. Not for use in diagnostic procedures. Not for resale without express authorization. Products are warranted to operate or perform substantially in conformance with published Product specifications in effect at the time of sale, as set forth in the Production documentation, specifications and/or accompanying package inserts ("Documentation"). No claim of suitability for use in applications regulated by FDA is made. The warranty provided herein is valid only when used by properly trained individuals. Unless otherwise stated in the Documentation, this warranty is limited to one year from date of shipment when the Product is subjected to normal, proper and intended usage. This warranty does not extend to anyone other than the Buyer. Any model or sample furnished to Buyer is merely illustrative of the general type and quality of goods and does not represent that any Product will conform to such model or sample. NO OTHER WARRANTIES, EXPRESS OR IMPLIED, ARE GRANTED INCLUDING WITHOUT LIMITATION, IMPLIED WARRANTIES OF MERCHANTABILITY, FITNESS FOR ANY PARTICULAR PURPOSE, OR NON-INFRINGEMENT. BUYER'S EXCLUSIVE REMEDY FOR NON-CONFORMING PRODUCTS DURING THE WARRANTY PERIOD IS LIMITED TO REPAIR, REPLACEMENT OF OR REFUND FOR THE NON-CONFORMING PRODUCT(S) AT SELLER'S SOLE OPTION. THERE IS NO OBLIGATION TO REPAIR, REPLACE OR REFUND FOR PRODUCTS AS THE RESULT OF (I) ACCIDENT, DISASTER OR EVENT OF FORCE MAJEURE, (II) MISUSE, FAULT OR NEGLIGENCE OF OR BY BUYER, (III) USE OF THE PRODUCTS IN A MANNER FOR WHICH THEY WERE NOT DESIGNED, OR (IV) IMPROPER STORAGE AND HANDLING OF THE PRODUCTS. Unless otherwise expressly stated on the Product or in the documentation accompanying the Product, the Product is intended for research only and is not to be used for any other purpose, including without limitation, unauthorized commercial uses, in vitro diagnostic uses, ex vivo or in vivo therapeutic uses, or any type of consumption by or application to human or animals.