

# CD154 (CD40 Ligand) Monoclonal Antibody (24-31), Super Bright™ 436, eBioscience™

Product Details	
Size	100 Tests
Species Reactivity	Cynomolgus monkey, Human
Host/Isotype	Mouse / IgG1, kappa
Recommended Isotype Control	Mouse IgG1 kappa Isotype Control (P3.6.2.8.1), Super Bright™ 436, eBioscience™
Class	Monoclonal
Type	Antibody
Clone	24-31
Conjugate	Super Bright™ 436
Excitation/Emission Max	413/431 nm
Form	Liquid
Concentration	5 µL/Test
Purification	Affinity chromatography
Storage buffer	PBS, pH 7.2, with BSA
Contains	0.09% sodium azide
Storage conditions	4° C, store in dark, DO NOT FREEZE!
RRID	AB_2717003

Applications	Tested Dilution	Publications
Flow Cytometry (Flow)	5 µL (0.5 µg)/test	1 Publication

## Product Specific Information

**Description:** The 24-31 monoclonal antibody reacts with human CD154, a 39 kDa transmembrane glycoprotein also known as gp39 and CD40 ligand (CD40L). CD154 is a member of the TNF superfamily and is expressed transiently by activated T cells. Through its binding to CD40 on antigen presenting cells including B cells, monocytes/macrophages and dendritic cells, CD154 serves a crucial function in T-APC cognate interaction. CD154 interaction with CD40 transduces signals for T-dependent B-cell activation and induces B cell cycle entry. 24-31 cross-reacts with the cynomolgus monkey CD154.

**Applications Reported:** This 24-31 antibody has been reported for use in flow cytometric analysis.

**Applications Tested:** This 24-31 antibody has been pre-diluted and tested by flow cytometric analysis of stimulated normal human peripheral blood cells. This may be used at 5 µL (0.5 µg) per test. A test is defined as the amount (µg) of antibody that will stain a cell sample in a final volume of 100 µL. Cell number should be determined empirically but can range from 10<sup>5</sup> to 10<sup>8</sup> cells/test.

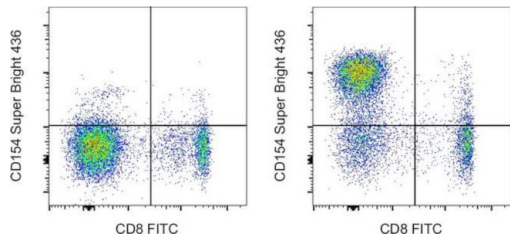
Super Bright 436 can be excited with the violet laser line (405 nm) and emits at 436 nm. We recommend using a 450/50 bandpass filter, or equivalent. Please make sure that your instrument is capable of detecting this fluorochrome.

When using two or more Super Bright dye-conjugated antibodies in a staining panel, it is recommended to use Super Bright Complete Staining Buffer (Product # SB-4401) to minimize any non-specific polymer interactions. Please refer to the datasheet for Super Bright Staining Buffer for more information.

Excitation: 405 nm; Emission: 436 nm; Laser: Violet Laser

Super Bright Polymer Dyes are sold under license from Becton, Dickinson and Company.

Product Images For CD154 (CD40 Ligand) Monoclonal Antibody (24-31), Super Bright™ 436, eBioscience™



**CD154 (CD40 Ligand) Antibody (62-1548-42) in Flow**  
Normal human peripheral blood cells were unstimulated (left) or stimulated for 5 hours with the Cell Stimulation Cocktail (plus protein transport inhibitors) (Product # 00-4975) (right). Cells were then stained with CD8 Monoclonal Antibody, FITC (Product # 11-0088) and CD154 (CD40 Ligand) Monoclonal Antibody, Super Bright 436 (Product # 62-1548-42). Cells in the lymphocyte gate were used for analysis.

1 Reference

Flow Cytometry (1)

Cell	Year
<b>Functional SARS-CoV-2-Specific Immune Memory Persists after Mild COVID-19.</b>	2021
"Published figure using CD154 (CD40 Ligand) monoclonal antibody (Product # 62-1548-42) in Flow Cytometry"	
Authors: Rodda LB,Netland J,Shehata L,Pruner KB,Morawski PA,Thouvenel CD,Takehara KK,Eggenberger J,Hemann EA,Waterman HR,Fahning ML,Chen Y,Hale M,Rathe J,Stokes C,Wrenn S,Fiala B,Carter L,Hamerman JA,King NP, Gale M,Campbell DJ,Rawlings DJ,Pepper M	

For Research Use Only. Not for use in diagnostic procedures. Not for resale without express authorization. Products are warranted to operate or perform substantially in conformance with published Product specifications in effect at the time of sale, as set forth in the Production documentation, specifications and/or accompanying package inserts ("Documentation"). No claim of suitability for use in applications regulated by FDA is made. The warranty provided herein is valid only when used by properly trained individuals. Unless otherwise stated in the Documentation, this warranty is limited to one year from date of shipment when the Product is subjected to normal, proper and intended usage. This warranty does not extend to anyone other than the Buyer. Any model or sample furnished to Buyer is merely illustrative of the general type and quality of goods and does not represent that any Product will conform to such model or sample. NO OTHER WARRANTIES, EXPRESS OR IMPLIED, ARE GRANTED INCLUDING WITHOUT LIMITATION, IMPLIED WARRANTIES OF MERCHANTABILITY, FITNESS FOR ANY PARTICULAR PURPOSE, OR NON INFRINGEMENT. BUYER'S EXCLUSIVE REMEDY FOR NON-CONFORMING PRODUCTS DURING THE WARRANTY PERIOD IS LIMITED TO REPAIR, REPLACEMENT OF OR REFUND FOR THE NON-CONFORMING PRODUCT(S) AT SELLER'S SOLE OPTION. THERE IS NO OBLIGATION TO REPAIR, REPLACE OR REFUND FOR PRODUCTS AS THE RESULT OF (I) ACCIDENT, DISASTER OR EVENT OF FORCE MAJEURE, (II) MISUSE, FAULT OR NEGLIGENCE OF OR BY BUYER, (III) USE OF THE PRODUCTS IN A MANNER FOR WHICH THEY WERE NOT DESIGNED, OR (IV) IMPROPER STORAGE AND HANDLING OF THE PRODUCTS. Unless otherwise expressly stated on the Product or in the documentation accompanying the Product, the Product is intended for research only and is not to be used for any other purpose, including without limitation, unauthorized commercial uses, in vitro diagnostic uses, ex vivo or in vivo therapeutic uses, or any type of consumption by or application to human or animals.