

TSLP Receptor Monoclonal Antibody (eBio1A6 (1A6)), Super Bright™ 436, eBioscience™

Product Details	
Size	25 Tests
Species Reactivity	Human
Host/Isotype	Mouse / IgG2a, lambda
Recommended Isotype Control	Mouse IgG2a kappa Isotype Control (eBM2a), Super Bright™ 436, eBioscience™
Class	Monoclonal
Type	Antibody
Clone	eBio1A6 (1A6)
Conjugate	Super Bright™ 436
Excitation/Emission Max	413/431 nm
Form	Liquid
Concentration	5 µL/Test
Purification	Affinity chromatography
Storage buffer	PBS, pH 7.2, with BSA
Contains	0.09% sodium azide
Storage conditions	4° C, store in dark, DO NOT FREEZE!
RRID	AB_2762527

Applications	Tested Dilution	Publications
Flow Cytometry (Flow)	5 µL (0.5 µg)/test	-

Product Specific Information

Description: The eBio1A6 monoclonal antibody reacts with human thymic stromal-derived lymphopoietin receptor (TSLPR). TSLPR is an approximately 50 kDa protein with significant similarity to the common gamma-chain. TSLPR complexes with IL-7R alpha (CD127) to form the high affinity receptor that binds thymic stromal-derived lymphopoietin (TSLP). Human TSLPR is expressed by monocytes and CD11c+ dendritic cells, and TSLP binding induces the expression of the Th2 cell-attracting chemokines CCL17 and CCL22. Furthermore, the TSLPR-induced activation of dendritic cells indirectly results in the increased secretion of Th cytokines IL-4, -5 and -13, which may be necessary for the regulation of CD4+ T cell homeostasis. In mice, deficiency of TSLPR has no effect on lymphocyte numbers, whereas double deficiency of TSLPR and common gamma-chain results in fewer lymphocytes than seen in mice deficient in the common gamma-chain alone. The eBio1A6 monoclonal antibody is able to cross-block binding of another anti-human TSLPR monoclonal antibody, 1D8.

Applications Reported: This eBio1A6 (1A6) antibody has been reported for use in flow cytometric analysis.

Applications Tested: This eBio1A6 (1A6) antibody has been pre-titrated and tested by flow cytometric analysis of TSLPR transfected cells. This can be used at 5 µL (0.5 µg) per test. A test is defined as the amount (µg) of antibody that will stain a cell sample in a final volume of 100 µL. Cell number should be determined empirically but can range from 10⁵ to 10⁸ cells /test.

Super Bright 436 can be excited with the violet laser line (405 nm) and emits at 436 nm. We recommend using a 450/50 bandpass filter, or equivalent. Please make sure that your instrument is capable of detecting this fluorochrome.

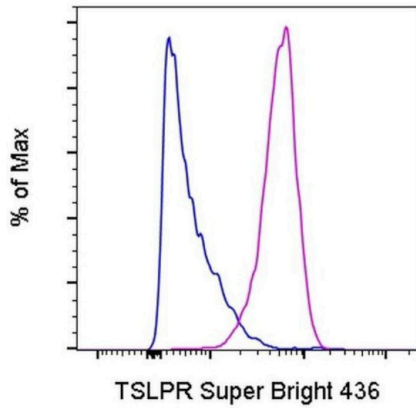
When using two or more Super Bright dye-conjugated antibodies in a staining panel, it is recommended to use Super Bright

Complete Staining Buffer (Product # SB-4401) to minimize any non-specific polymer interactions. Please refer to the datasheet for Super Bright Staining Buffer for more information.

Excitation: 405 nm; Emission: 436 nm; Laser: Violet Laser

Super Bright Polymer Dyes are sold under license from Becton, Dickinson and Company.

Product Images For TSLP Receptor Monoclonal Antibody (eBio1A6 (1A6)), Super Bright™ 436, eBioscience™



TSLP Receptor Antibody (62-5499-41) in Flow

Human TSLP Receptor transfected cells were stained with Mouse IgG2a kappa Isotype Control, Super Bright 436 (Product # 62-4724-82) (blue histogram) or TSLP Receptor Monoclonal Antibody, Super Bright 436 (purple histogram). Total viable cells were used for analysis.

For Research Use Only. Not for use in diagnostic procedures. Not for resale without express authorization. Products are warranted to operate or perform substantially in conformance with published Product specifications in effect at the time of sale, as set forth in the Production documentation, specifications and/or accompanying package inserts ("Documentation"). No claim of suitability for use in applications regulated by FDA is made. The warranty provided herein is valid only when used by properly trained individuals. Unless otherwise stated in the Documentation, this warranty is limited to one year from date of shipment when the Product is subjected to normal, proper and intended usage. This warranty does not extend to anyone other than the Buyer. Any model or sample furnished to Buyer is merely illustrative of the general type and quality of goods and does not represent that any Product will conform to such model or sample. NO OTHER WARRANTIES, EXPRESS OR IMPLIED, ARE GRANTED INCLUDING WITHOUT LIMITATION, IMPLIED WARRANTIES OF MERCHANTABILITY, FITNESS FOR ANY PARTICULAR PURPOSE, OR NON INFRINGEMENT. BUYER'S EXCLUSIVE REMEDY FOR NON-CONFORMING PRODUCTS DURING THE WARRANTY PERIOD IS LIMITED TO REPAIR, REPLACEMENT OF OR REFUND FOR THE NON-CONFORMING PRODUCT(S) AT SELLER'S SOLE OPTION. THERE IS NO OBLIGATION TO REPAIR, REPLACE OR REFUND FOR PRODUCTS AS THE RESULT OF (I) ACCIDENT, DISASTER OR EVENT OF FORCE MAJEURE, (II) MISUSE, FAULT OR NEGLIGENCE OF OR BY BUYER, (III) USE OF THE PRODUCTS IN A MANNER FOR WHICH THEY WERE NOT DESIGNED, OR (IV) IMPROPER STORAGE AND HANDLING OF THE PRODUCTS. Unless otherwise expressly stated on the Product or in the documentation accompanying the Product, the Product is intended for research only and is not to be used for any other purpose, including without limitation, unauthorized commercial uses, in vitro diagnostic uses, ex vivo or in vivo therapeutic uses, or any type of consumption by or application to human or animals.