

TCR V beta 11 Monoclonal Antibody (RR3-15), Super Bright™ 436, eBioscience™

Product Details	
Size	25 µg
Species Reactivity	Mouse
Published Species	Mouse
Host/Isotype	Rat / IgG2b, kappa
Recommended Isotype Control	Rat IgG2b kappa Isotype Control (eB149/10H5), Super Bright™ 436, eBioscience™
Class	Monoclonal
Type	Antibody
Clone	RR3-15
Conjugate	Super Bright™ 436
Form	Liquid
Concentration	0.2 mg/mL
Purification	Affinity chromatography
Storage buffer	PBS, pH 7.2, with BSA
Contains	0.09% sodium azide
Storage conditions	4° C, store in dark, DO NOT FREEZE!
RRID	AB_2762752

Applications	Tested Dilution	Publications
Flow Cytometry (Flow)	0.25 µg/test	1 Publication

Product Specific Information

Description: This RR3-15 monoclonal antibody reacts with the mouse T-cell receptor (TCR) V beta 11 chain. Composed of an alpha and beta chain, TCR specificity is typically determined by Va, Ja, Vb, Db, and Jb gene rearrangement. The RR3-15 antibody recognizes the V beta 11 chain on T cells from mouse strains with the b haplotype in the Tcrb gene complex, including C57BL/6 and B10, but is absent in mice with the a haplotype, such as C57L, SJL, and SWR. In addition, reports indicate that Vbeta11+ T cells are eliminated in mice bearing the MHC Class II I-E molecule. Finally, V beta 11+CD4+ T cells have been associated with graft-versus-host disease (GVHD) severity.

The RR3-15 antibody has been reported to activate V beta 11+ T cells.

Applications Reported: This RR3-15 antibody has been reported for use in flow cytometric analysis.

Applications Tested: This RR3-15 antibody has been tested by flow cytometric analysis of mouse lymph node cells. This may be used at less than or equal to 0.25 µg per test. A test is defined as the amount (µg) of antibody that will stain a cell sample in a final volume of 100 µL. Cell number should be determined empirically but can range from 10⁵ to 10⁸ cells/test. It is recommended that the antibody be carefully titrated for optimal performance in the assay of interest.

Super Bright 436 can be excited with the violet laser line (405 nm) and emits at 436 nm. We recommend using a 450/50 bandpass

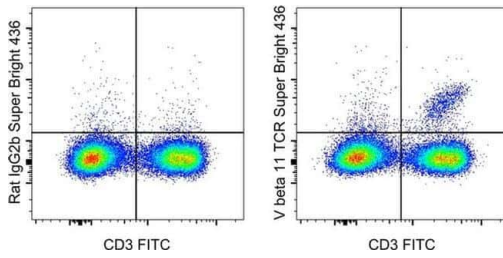
filter, or equivalent. Please make sure that your instrument is capable of detecting this fluorochrome.

When using two or more Super Bright dye-conjugated antibodies in a staining panel, it is recommended to use Super Bright Complete Staining Buffer (Product # SB-4401) to minimize any non-specific polymer interactions. Please refer to the datasheet for Super Bright Staining Buffer for more information.

Excitation: 405 nm; Emission: 436 nm; Laser: Violet Laser

Super Bright Polymer Dyes are sold under license from Becton, Dickinson and Company.

Product Images For TCR V beta 11 Monoclonal Antibody (RR3-15), Super Bright™ 436, eBioscience™



TCR V beta 11 Antibody (62-5827-80) in Flow

C57BL/6 mouse lymph node cells were stained with CD3e Monoclonal Antibody, FITC (Product # 11-0031-82) and 0.125 µg of Rat IgG2b kappa Isotype Control, Super Bright 436 (Product # 62-4031-82) (left) or 0.125 µg of V beta 11 TCR Monoclonal Antibody, Super Bright 436 (right). Cells in the lymphocyte gate were used for analysis.

1 Reference

Flow Cytometry (1)

Cell Microglia Require CD4 T Cells to Complete the Fetal-to-Adult Transition.

"62-5827 was used in Flow cytometry/Cell sorting to investigate the function of brain-resident CD4 T cells."

Authors: Pasciuto E, Burton OT, Roca CP, Lagou V, Rajan WD, Theys T, Mancuso R, Tito RY, Kouser L, Callaerts-Vegh Z, de la Fuente AG, Prezzemolo T, Mascali LG, Brajic A, Whyte CE, Yshii L, Martinez-Muriana A, Naughton M, Young A, Moudra A, Lemaitre P, Poovathingal S, Raes J, De Strooper B, Fitzgerald DC, Dooley J, Liston A

Year
2020

Species
Mouse

For Research Use Only. Not for use in diagnostic procedures. Not for resale without express authorization. Products are warranted to operate or perform substantially in conformance with published Product specifications in effect at the time of sale, as set forth in the Production documentation, specifications and/or accompanying package inserts ("Documentation"). No claim of suitability for use in applications regulated by FDA is made. The warranty provided herein is valid only when used by properly trained individuals. Unless otherwise stated in the Documentation, this warranty is limited to one year from date of shipment when the Product is subjected to normal, proper and intended usage. This warranty does not extend to anyone other than the Buyer. Any model or sample furnished to Buyer is merely illustrative of the general type and quality of goods and does not represent that any Product will conform to such model or sample. NO OTHER WARRANTIES, EXPRESS OR IMPLIED, ARE GRANTED INCLUDING WITHOUT LIMITATION, IMPLIED WARRANTIES OF MERCHANTABILITY, FITNESS FOR ANY PARTICULAR PURPOSE, OR NON INFRINGEMENT. BUYER'S EXCLUSIVE REMEDY FOR NON-CONFORMING PRODUCTS DURING THE WARRANTY PERIOD IS LIMITED TO REPAIR, REPLACEMENT OF OR REFUND FOR THE NON-CONFORMING PRODUCT(S) AT SELLER'S SOLE OPTION. THERE IS NO OBLIGATION TO REPAIR, REPLACE OR REFUND FOR PRODUCTS AS THE RESULT OF (I) ACCIDENT, DISASTER OR EVENT OF FORCE MAJEURE, (II) MISUSE, FAULT OR NEGLIGENCE OF OR BY BUYER, (III) USE OF THE PRODUCTS IN A MANNER FOR WHICH THEY WERE NOT DESIGNED, OR (IV) IMPROPER STORAGE AND HANDLING OF THE PRODUCTS. Unless otherwise expressly stated on the Product or in the documentation accompanying the Product, the Product is intended for research only and is not to be used for any other purpose, including without limitation, unauthorized commercial uses, in vitro diagnostic uses, ex vivo or in vivo therapeutic uses, or any type of consumption by or application to human or animals.