

# CD185 (CXCR5) Monoclonal Antibody (MU5UBEE), Super Bright™ 436, eBioscience™

Product Details	
Size	25 Tests
Species Reactivity	Human, Non-human primate, Rhesus monkey
Published Species	Human
Host/Isotype	Mouse / IgG2b, kappa
Recommended Isotype Control	Mouse IgG2b kappa Isotype Control (eBMG2b), Super Bright™ 436, eBioscience™
Class	Monoclonal
Type	Antibody
Clone	MU5UBEE
Conjugate	Super Bright™ 436
Excitation/Emission Max	413/431 nm
Immunogen	N-terminal extracellular domain
Form	Liquid
Concentration	5 µL/Test
Purification	Affinity chromatography
Storage buffer	PBS, pH 7.2, with BSA
Contains	0.09% sodium azide
Storage conditions	4° C, store in dark, DO NOT FREEZE!
RRID	AB_2724063

Applications	Tested Dilution	Publications
Immunohistochemistry (IHC)	-	1 Publication
Flow Cytometry (Flow)	5 µL (1.0 µg)/test	7 Publications

## Product Specific Information

**Description:** The MU5UBEE monoclonal antibody reacts with human and non-human primate CD185. CD185, which is also known as C-X-C chemokine receptor 5 (CXCR5) and Burkitt lymphoma receptor 1 (BLR1), is a seven transmembrane G protein-coupled receptor originally identified in Burkitt's lymphoma. In peripheral blood, CD185 is expressed on B cells, CD4+ T cells (but not Th1 or Th2 cells), as well as on a subpopulation of memory (CD45RO+) T cells. Circulating CD185+ T cells are in a resting state and migrate to the lymph nodes due to expression of CCR7 and CD62L. In tonsil, CD185 is expressed on nearly all CD4+ cells together with CD45RO and activation markers such as CD69 and ICOS. Tonsillar CD185+ cells have been shown to induce antibody production when co-cultured with B cells, thus supporting their role in providing help to B cells. Furthermore, this chemokine receptor plays a critical role in lymphocyte trafficking, in particular T cell migration into the B cell follicles of germinal centers in response to CXCL13, making CD185 an established marker of follicular helper T cells.

**Applications Reported:** This MU5UBEE antibody has been reported for use in flow cytometric analysis.

**Applications Tested:** This MU5UBEE antibody has been pre-diluted and tested by flow cytometric analysis of normal human peripheral blood cells. This may be used at 5 µL (1.0 µg) per test. A test is defined as the amount (µg) of antibody that will stain a cell sample in a final volume of 100 µL. Cell number should be determined empirically but can range from 10<sup>5</sup> to 10<sup>8</sup> cells /test.

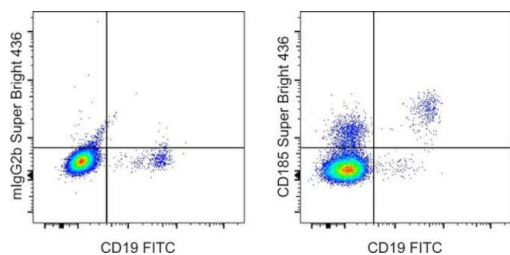
Super Bright 436 can be excited with the violet laser line (405 nm) and emits at 436 nm. We recommend using a 450/50 bandpass filter, or equivalent. Please make sure that your instrument is capable of detecting this fluorochrome.

When using two or more Super Bright dye-conjugated antibodies in a staining panel, it is recommended to use Super Bright Complete Staining Buffer (Product # SB-4401) to minimize any non-specific polymer interactions. Please refer to the datasheet for Super Bright Staining Buffer for more information.

Excitation: 405 nm; Emission: 436 nm; Laser: Violet Laser

Super Bright Polymer Dyes are sold under license from Becton, Dickinson and Company.

## Product Images For CD185 (CXCR5) Monoclonal Antibody (MU5UBEE), Super Bright™ 436, eBioscience™



### CD185 (CXCR5) Antibody (62-9185-41) in Flow

Normal human peripheral blood cells were stained with CD19 Monoclonal Antibody, FITC (Product # 11-0199-42) and Mouse IgG2b kappa Isotype Control, Super Bright 436 (Product # 62-4732-82) (left) or CD185 Monoclonal Antibody, Super Bright 436 (right). Cells in the lymphocyte gate were used for analysis.

[View more figures on thermofisher.com](https://www.thermofisher.com)

## 8 References

### Immunohistochemistry (1)

iScience

#### NK-B cell cross talk induces CXCR5 expression on natural killer cells.

"Published figure using CD185 (CXCR5) monoclonal antibody (Product # 62-9185-42) in Flow Cytometry"

Authors: Rascle P, Jacquelin B, Petitdemange C, Contreras V, Planchais C, Lazzarini M, Dereuddre-Bosquet N, Le Grand R, Mouquet H, Huot N, Müller-Trutwin M

Year  
2021

### Flow Cytometry (7)

Cell

#### SARS-CoV-2 mRNA vaccination elicits a robust and persistent T follicular helper cell response in humans.

"62-9185-42 was used in Flow Cytometry to evaluate the T cell receptor sequences and phenotype of SARS-CoV-2 vaccine-induced lymph node follicular helper CD4+ T cells."

Authors: Mudd PA, Minervina AA, Pogorelyy MV, Turner JS, Kim W, Kalaidina E, Petersen J, Schmitz AJ, Lei T, Haile A, Kirk AM, Mettelman RC, Crawford JC, Nguyen THO, Rowntree LC, Rosati E, Richards KA, Sant AJ, Klebert MK, Suessen T, Middleton WD, Wolf J, Teefey SA, O'Halloran JA, Presti RM, Kedzierska K, Rossjohn J, Thomas PG, Ellebedy AH

Year  
2022

Species  
Human

Frontiers in immunology

#### *In Situ* Characterization of Human Lymphoid Tissue Immune Cells by Multispectral Confocal Imaging and Quantitative Image Analysis; Implications for HIV Reservoir Characterization.

"Published figure using CD185 (CXCR5) monoclonal antibody (Product # 62-9185-42) in Flow Cytometry"

Authors: Moysi E, Del Rio Estrada PM, Torres-Ruiz F, Reyes-Terán G, Koup RA, Petrovas C

Year  
2021

[View more Flow references on thermofisher.com](#)

### More applications with references on thermofisher.com

For Research Use Only. Not for use in diagnostic procedures. Not for resale without express authorization. Products are warranted to operate or perform substantially in conformance with published Product specifications in effect at the time of sale, as set forth in the Production documentation, specifications and/or accompanying package inserts ("Documentation"). No claim of suitability for use in applications regulated by FDA is made. The warranty provided herein is valid only when used by properly trained individuals. Unless otherwise stated in the Documentation, this warranty is limited to one year from date of shipment when the Product is subjected to normal, proper and intended usage. This warranty does not extend to anyone other than the Buyer. Any model or sample furnished to Buyer is merely illustrative of the general type and quality of goods and does not represent that any Product will conform to such model or sample. NO OTHER WARRANTIES, EXPRESS OR IMPLIED, ARE GRANTED INCLUDING WITHOUT LIMITATION, IMPLIED WARRANTIES OF MERCHANTABILITY, FITNESS FOR ANY PARTICULAR PURPOSE, OR NON INFRINGEMENT. BUYER'S EXCLUSIVE REMEDY FOR NON-CONFORMING PRODUCTS DURING THE WARRANTY PERIOD IS LIMITED TO REPAIR, REPLACEMENT OF OR REFUND FOR THE NON-CONFORMING PRODUCT(S) AT SELLER'S SOLE OPTION. THERE IS NO OBLIGATION TO REPAIR, REPLACE OR REFUND FOR PRODUCTS AS THE RESULT OF (I) ACCIDENT, DISASTER OR EVENT OF FORCE MAJEURE, (II) MISUSE, FAULT OR NEGLIGENCE OF OR BY BUYER, (III) USE OF THE PRODUCTS IN A MANNER FOR WHICH THEY WERE NOT DESIGNED, OR (IV) IMPROPER STORAGE AND HANDLING OF THE PRODUCTS. Unless otherwise expressly stated on the Product or in the documentation accompanying the Product, the Product is intended for research only and is not to be used for any other purpose, including without limitation, unauthorized commercial uses, in vitro diagnostic uses, ex vivo or in vivo therapeutic uses, or any type of consumption by or application to human or animals.