

CD326 (EpCAM) Monoclonal Antibody (1B7), Super Bright™ 436, eBioscience™

Product Details	
Size	25 Tests
Host/Isotype	Mouse / IgG1, kappa
Recommended Isotype Control	Mouse IgG1 kappa Isotype Control (P3.6.2.8.1), Super Bright™ 436, eBioscience™
Class	Monoclonal
Type	Antibody
Clone	1B7
Conjugate	Super Bright™ 436
Excitation/Emission Max	413/431 nm
Form	Liquid
Concentration	5 µL/Test
Storage conditions	4° C, store in dark, DO NOT FREEZE!
RRID	AB_2802418

Applications	Tested Dilution	Publications
Immunocytochemistry (ICC/IF)	-	1 Publication
Flow Cytometry (Flow)	5 µL (0.5 µg)/Test	7 Publications

Product Specific Information

Description: EpCAM (Epithelial cell adhesion molecule, CD326, KSA, TROP1) is a 40 kD cell-surface adhesion molecule participating in homophilic, calcium-independent cell-cell interactions. EpCAM is a type-I transmembrane protein, and is expressed primarily on the basolateral surface of most epithelia. Although normal epithelia express low levels of EpCAM, increased expression has been correlated with increased proliferation and progression to a mesenchymal phenotype. EpCAM has also been used as a diagnostic marker on circulating metastatic carcinoma cells, while cancer cells of non-epithelial origin do not express EpCAM.

Applications Reported: This 1B7 antibody has been reported for use in flow cytometric analysis.

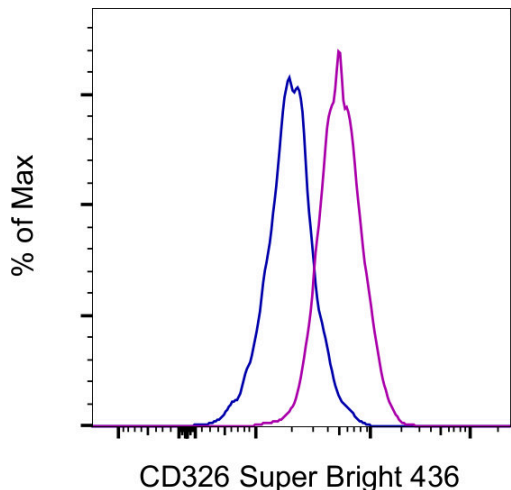
Applications Tested: This 1B7 antibody has been pre-diluted and tested by flow cytometric analysis of A549 cells. This may be used at 5 µL (0.5 µg) per test. A test is defined as the amount (µg) of antibody that will stain a cell sample in a final volume of 100 µL. Cell number should be determined empirically but can range from 10⁵ to 10⁸ cells/test.

Super Bright 436 can be excited with the violet laser line (405 nm) and emits at 436 nm. We recommend using a 450/50 bandpass filter, or equivalent. Please make sure that your instrument is capable of detecting this fluorochrome.

When using two or more Super Bright dye-conjugated antibodies in a staining panel, it is recommended to use Super Bright Complete Staining Buffer (Product # SB-4401) to minimize any non-specific polymer interactions. Please refer to the datasheet for Super Bright Staining Buffer for more information.

Excitation: 405 nm; Emission: 436 nm; Laser: Violet Laser

Super Bright Polymer Dyes are sold under license from Becton, Dickinson and Company.



CD326 (EpCAM) Antibody (62-9326-41) in Flow

A549 cells were stained with Mouse IgG1 kappa Isotype Control, Super Bright 436 (Product # 62-4714-82) (blue histogram) or CD326 Monoclonal Antibody, Super Bright 436 (purple histogram). Total viable cells were used for analysis, as determined by 7-AAD (Product # 00-6993-50).

[View more figures on thermofisher.com](#)

8 References

Immunocytochemistry (1)

Scientific reports

Tumor suppressor DEAR1 regulates mammary epithelial cell fate and predicts early onset and metastasis in triple negative breast cancer.

"Published figure using CD326 (EpCAM) monoclonal antibody (Product # 62-9326-42) in Flow Cytometry"

Authors: Le UQ,Chen N,Balaseshthil S,Lurie E,Yang F,Liu S,Rubin L,Solis Soto LM,Raso MG,Batra H,Sahin AA,Wistuba II,Killary AM

Year
2022

Flow Cytometry (7)

International journal of cancer

Dynamics of CXCR4 positive circulating tumor cells in prostate cancer patients during radiotherapy.

"Published figure using CD326 (EpCAM) monoclonal antibody (Product # 62-9326-42) in Flow Cytometry"

Authors: Klusa D,Lohaus F,Franken A,Baumbach M,Cojoc M,Dowling P,Linge A,Offermann A,Löck S,Hušman D,Rivandi M,Polzer B,Freytag V,Lange T,Neubauer H,Kücken M,Perner S,Hölscher T,Dubrovskaya A,Krause M,Kurth I,Baumann M,Peitzsch C

Year
2023

Scientific reports

Tumor suppressor DEAR1 regulates mammary epithelial cell fate and predicts early onset and metastasis in triple negative breast cancer.

"Published figure using CD326 (EpCAM) monoclonal antibody (Product # 62-9326-42) in Flow Cytometry"

Authors: Le UQ,Chen N,Balaseshthil S,Lurie E,Yang F,Liu S,Rubin L,Solis Soto LM,Raso MG,Batra H,Sahin AA,Wistuba II,Killary AM

Year
2022

[View more Flow references on thermofisher.com](#)

More applications with references on thermofisher.com

For Research Use Only. Not for use in diagnostic procedures. Not for resale without express authorization. Products are warranted to operate or perform substantially in conformance with published Product specifications in effect at the time of sale, as set forth in the Production documentation, specifications and/or accompanying package inserts ("Documentation"). No claim of suitability for use in applications regulated by FDA is made. The warranty provided herein is valid only when used by properly trained individuals. Unless otherwise stated in the Documentation, this warranty is limited to one year from date of shipment when the Product is subjected to normal, proper and intended usage. This warranty does not extend to anyone other than the Buyer. Any model or sample furnished to Buyer is merely illustrative of the general type and quality of goods and does not represent that any Product will conform to such model or sample. NO OTHER WARRANTIES, EXPRESS OR IMPLIED, ARE GRANTED INCLUDING WITHOUT LIMITATION, IMPLIED WARRANTIES OF MERCHANTABILITY, FITNESS FOR ANY PARTICULAR PURPOSE, OR NON INFRINGEMENT. BUYER'S EXCLUSIVE REMEDY FOR NON-CONFORMING PRODUCTS DURING THE WARRANTY PERIOD IS LIMITED TO REPAIR, REPLACEMENT OF OR REFUND FOR THE NON-CONFORMING PRODUCT(S) AT SELLER'S SOLE OPTION. THERE IS NO OBLIGATION TO REPAIR, REPLACE OR REFUND FOR PRODUCTS AS THE RESULT OF (I) ACCIDENT, DISASTER OR EVENT OF FORCE MAJEURE, (II) MISUSE, FAULT OR NEGLIGENCE OF OR BY BUYER, (III) USE OF THE PRODUCTS IN A MANNER FOR WHICH THEY WERE NOT DESIGNED, OR (IV) IMPROPER STORAGE AND HANDLING OF THE PRODUCTS. Unless otherwise expressly stated on the Product or in the documentation accompanying the Product, the Product is intended for research only and is not to be used for any other purpose, including without limitation, unauthorized commercial uses, in vitro diagnostic uses, ex vivo or in vivo therapeutic uses, or any type of consumption by or application to human or animals.