

CD279 (PD-1) Monoclonal Antibody (RMP1-30), Super Bright™ 436, eBioscience™

Product Details	
Size	100 µg
Species Reactivity	Mouse
Host/Isotype	Rat / IgG2b, kappa
Recommended Isotype Control	Rat IgG2b kappa Isotype Control (eB149/10H5), Super Bright™ 436, eBioscience™
Class	Monoclonal
Type	Antibody
Clone	RMP1-30
Conjugate	Super Bright™ 436
Excitation/Emission Max	413/431 nm
Form	Liquid
Concentration	0.2 mg/mL
Purification	Affinity chromatography
Storage buffer	PBS, pH 7.2, with BSA
Contains	0.09% sodium azide
Storage conditions	4° C, store in dark, DO NOT FREEZE!
RRID	AB_2744824

Applications	Tested Dilution	Publications
Flow Cytometry (Flow)	1 µg/test	5 Publications

Product Specific Information

Description: The RMP1-30 antibody reacts with mouse PD-1 (programmed death-1), a 55 kDa member of the Ig superfamily. PD-1 contains the immunoreceptor tyrosine-based inhibitory motif (ITIM) and plays a key role in peripheral tolerance and autoimmune disease in mice. PD-1 is expressed mainly on activated T and B lymphocytes. Two novel B7 Family members have been identified as PD-1 ligands, PD-L1 (B7-H1) and PD-L2 (B7-DC). Evidence reported to date suggests overlapping functions for these ligands and their constitutive expression on some normal tissues and upregulation on activated antigen-presenting cells. RMP1-30 does not block the binding of either B7-H1-Ig or B7-DC-Ig to PD-1 transfectants.

Applications Reported: This RMP1-30 antibody has been reported for use in flow cytometric analysis.

Applications Tested: This RMP1-30 antibody has been tested by flow cytometric analysis of activated mouse splenocytes. This may be used at less than or equal to 1 µg per test. A test is defined as the amount (µg) of antibody that will stain a cell sample in a final volume of 100 µL. Cell number should be determined empirically but can range from 10⁵ to 10⁸ cells/test. It is recommended that the antibody be carefully titrated for optimal performance in the assay of interest.

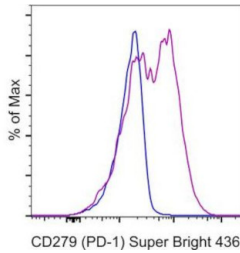
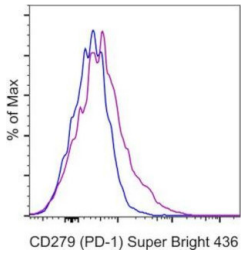
Super Bright 436 can be excited with the violet laser line (405 nm) and emits at 436 nm. We recommend using a 450/50 bandpass filter, or equivalent. Please make sure that your instrument is capable of detecting this fluorochrome.

When using two or more Super Bright dye-conjugated antibodies in a staining panel, it is recommended to use Super Bright Complete Staining Buffer (Product # SB-4401) to minimize any non-specific polymer interactions. Please refer to the datasheet for Super Bright Staining Buffer for more information.

Excitation: 405 nm; Emission: 436 nm; Laser: Violet Laser

Super Bright Polymer Dyes are sold under license from Becton, Dickinson and Company.

Product Images For CD279 (PD-1) Monoclonal Antibody (RMP1-30), Super Bright™ 436, eBioscience™



CD279 (PD-1) Antibody (62-9981-82) in Flow

BALB/c mouse splenocytes were unstimulated (left) or stimulated with CD3e and CD28 Monoclonal Antibodies, Functional Grade (Product # 16-0031-85 and Product # 16-0281-85) (right). Cells were then stained with 0.5 µg of Rat IgG2b kappa Isotype Control, Super Bright 436 (Product # 62-4031-82) (blue histogram) or CD279 Monoclonal Antibody, Super Bright 436 (purple histogram). Total viable cells were used for analysis, as determined by 7-AAD (Product # 00-6993-50).

[View more figures on thermofisher.com](#)

5 References

Flow Cytometry (5)

Nature communications

Breast cancer cell-derived extracellular vesicles promote CD8⁺T cell exhaustion via TGF- type II receptor signaling.

"Published figure using CD279 (PD-1) monoclonal antibody (Product # 62-9981-82) in Flow Cytometry"

Authors: Xie F,Zhou X,Su P,Li H,Tu Y,Du J,Pan C,Wei X,Zheng M,Jin K,Miao L,Wang C,Meng X,van Dam H,Ten Dijke P,Zhang L,Zhou F

Year
2022

iScience

Functional assessment of the cell-autonomous role of NADase CD38 in regulating CD8⁺ T cell exhaustion.

"Published figure using CD279 (PD-1) monoclonal antibody (Product # 62-9981-82) in Flow Cytometry"

Authors: Ma K,Sun L,Shen M,Zhang X,Xiao Z,Wang J,Liu X,Jiang K,Xiao-Feng Qin F,Guo F,Zhang B,Zhang L

Year
2022

[View more Flow references on thermofisher.com](#)

More applications with references on thermofisher.com

For Research Use Only. Not for use in diagnostic procedures. Not for resale without express authorization. Products are warranted to operate or perform substantially in conformance with published Product specifications in effect at the time of sale, as set forth in the Production documentation, specifications and/or accompanying package inserts ("Documentation"). No claim of suitability for use in applications regulated by FDA is made. The warranty provided herein is valid only when used by properly trained individuals. Unless otherwise stated in the Documentation, this warranty is limited to one year from date of shipment when the Product is subjected to normal, proper and intended usage. This warranty does not extend to anyone other than the Buyer. Any model or sample furnished to Buyer is merely illustrative of the general type and quality of goods and does not represent that any Product will conform to such model or sample. NO OTHER WARRANTIES, EXPRESS OR IMPLIED, ARE GRANTED INCLUDING WITHOUT LIMITATION, IMPLIED WARRANTIES OF MERCHANTABILITY, FITNESS FOR ANY PARTICULAR PURPOSE, OR NON-INFRINGEMENT. BUYER'S EXCLUSIVE REMEDY FOR NON-CONFORMING PRODUCTS DURING THE WARRANTY PERIOD IS LIMITED TO REPAIR, REPLACEMENT OF OR REFUND FOR THE NON-CONFORMING PRODUCT(S) AT SELLER'S SOLE OPTION. THERE IS NO OBLIGATION TO REPAIR, REPLACE OR REFUND FOR PRODUCTS AS THE RESULT OF (I) ACCIDENT, DISASTER OR EVENT OF FORCE MAJEURE, (II) MISUSE, FAULT OR NEGLIGENCE OF OR BY BUYER, (III) USE OF THE PRODUCTS IN A MANNER FOR WHICH THEY WERE NOT DESIGNED, OR (IV) IMPROPER STORAGE AND HANDLING OF THE PRODUCTS. Unless otherwise expressly stated on the Product or in the documentation accompanying the Product, the Product is intended for research only and is not to be used for any other purpose, including without limitation, unauthorized commercial uses, in vitro diagnostic uses, ex vivo or in vivo therapeutic uses, or any type of consumption by or application to human or animals.