

CD45 Monoclonal Antibody (30-F11), Super Bright™ 600, eBioscience™

Product Details	
Size	100 µg
Species Reactivity	Mouse
Published Species	Mouse, Human
Host/Isotype	Rat / IgG2b, kappa
Recommended Isotype Control	Rat IgG2b kappa Isotype Control (eB149/10H5), Super Bright™ 600, eBioscience™
Class	Monoclonal
Type	Antibody
Clone	30-F11
Conjugate	Super Bright™ 600
Excitation/Emission Max	414/601 nm
Form	Liquid
Concentration	0.2 mg/mL
Purification	Affinity chromatography
Storage buffer	PBS, pH 7.2, with BSA
Contains	0.09% sodium azide
Storage conditions	4° C, store in dark, DO NOT FREEZE!
RRID	AB_2637149

Applications	Tested Dilution	Publications
Immunohistochemistry (IHC)	-	38 Publications
Immunohistochemistry (PFA fixed) (IHC (PFA))	-	1 Publication
Immunohistochemistry (Frozen) (IHC (F))	-	3 Publications
Immunocytochemistry (ICC/IF)	-	9 Publications
Flow Cytometry (Flow)	0.25 µg/test	195 Publications

Product Specific Information

Description: The 30-F11 monoclonal antibody reacts with all isoforms of mouse CD45, also known as Leukocyte Common Antigen (LCA). CD45 is expressed by all hematopoietic cells excluding mature erythrocytes and platelets. The cytoplasmic portion of CD45 has tyrosine phosphatase enzymatic activity and plays an important role in activation of lymphocytes.

Applications Reported: This 30-F11 antibody has been reported for use in flow cytometric analysis.

Applications Tested: This 30-F11 antibody has been tested by flow cytometric analysis of mouse bone marrow cells. This can be used at less than or equal to 0.25 µg per test. A test is defined as the amount (µg) of antibody that will stain a cell sample in a final volume of 100 µL. Cell number should be determined empirically but can range from 10⁵ to 10⁸ cells/test. It is recommended that the antibody be carefully titrated for optimal performance in the assay of interest.

Super Bright 600 is a tandem dye that can be excited with the violet laser line (405 nm) and emits at 600 nm. We recommend using a 610/20 bandpass filter. Please make sure that your instrument is capable of detecting this fluorochrome.

When using two or more Super Bright dye-conjugated antibodies in a staining panel, it is recommended to use Super Bright Complete Staining Buffer (Product # SB-4401) to minimize any non-specific polymer interactions. Please refer to the datasheet for Super Bright Staining Buffer for more information.

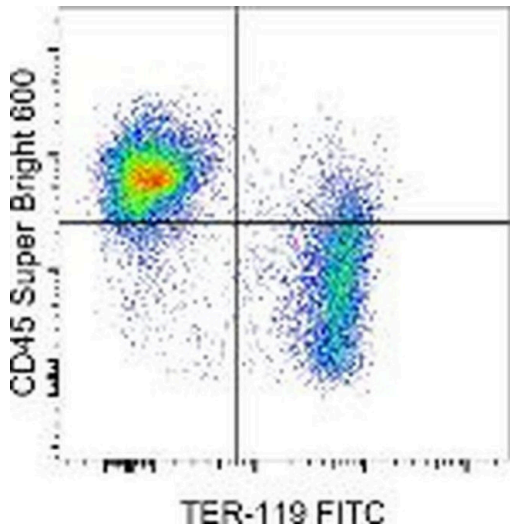
Light sensitivity: This tandem dye is sensitive to photo-induced oxidation. Protect this vial and stained samples from light.

Fixation: Samples can be stored in IC Fixation Buffer (cat. 00-8222) (100 μ L of cell sample + 100 μ L of IC Fixation Buffer) or 1-step Fix/Lyse Solution (cat. 00-5333) for up to 3 days in the dark at 2-8°C with minimal impact on brightness and FRET efficiency/compensation. Some generalizations regarding fluorochrome performance after fixation can be made, but clone specific performance should be determined empirically.

Excitation: 405 nm; Emission: 600 nm; Laser: Violet Laser

Super Bright Polymer Dyes are sold under license from Becton, Dickinson and Company.

Product Images For CD45 Monoclonal Antibody (30-F11), Super Bright™ 600, eBioscience™



CD45 Antibody (63-0451-82) in Flow

Staining of BALB/c bone marrow cells with Anti-Mouse TER-119 FITC (Product # 11-5921-82) and 0.125 μ g of Anti-Mouse CD45 Super Bright 600. Total viable cells were used for analysis.

View more figures on thermofisher.com

Immunohistochemistry (38)

<p>Cancer research communications</p> <p>Toll-like Receptor Signaling-deficient Cells Enhance Antitumor Activity of Cell-based Immunotherapy by Increasing Tumor Homing.</p> <p>"Published figure using CD45 monoclonal antibody (Product # 63-0451-82) in Immunohistochemistry"</p> <p>Authors: Morales-Molina A,Rodriguez-Milla MÁ,Gambera S,Cejalvo T,de Andrés B,Gaspar ML,García-Castro J</p>	<p>Year</p> <p>2023</p>
<p>Cellular and molecular gastroenterology and hepatology</p> <p>A Point Mutation R122C in RUNX3 Promotes the Expansion of Isthmus Stem Cells and Inhibits Their Differentiation in the Stomach.</p> <p>"Published figure using CD45 monoclonal antibody (Product # 63-0451-82) in Immunohistochemistry"</p> <p>Authors: Douchi D,Yamamura A,Matsuo J,Lee JW,Nuttonmanit N,Melissa Lim YH,Suda K,Shimura M,Chen S,Pang S,Kohu K,Kaneko M,Kiyonari H,Kaneda A,Yoshida H,Taniuchi I,Osato M,Yang H,Unno M,Bok-Yan So J,Yeoh KG,Chuang LSH,Bae SC,Ito Y</p>	<p>Year</p> <p>2022</p>

View more IHC references on thermofisher.com

Immunohistochemistry (PFA fixed) (1)

<p>Nature communications</p> <p>Genetic fate-mapping reveals surface accumulation but not deep organ invasion of pleural and peritoneal cavity macrophages following injury.</p> <p>"Published figure using CD45 monoclonal antibody (Product # 63-0451-82) in Immunohistochemistry (PFA fixed)"</p> <p>Authors: Jin H,Liu K,Tang J,Huang X,Wang H,Zhang Q,Zhu H,Li Y,Pu W,Zhao H,He L,Li Y,Zhang S,Zhang Z,Zhao Y,Qin Y,Pflanz S,Kasmi KEI,Zhang W,Liu Z,Ginhoux F, Ji Y,He B,Wang L,Zhou B</p>	<p>Year</p> <p>2021</p>
---	-------------------------

Immunohistochemistry (Frozen) (3)

<p>Frontiers in molecular biosciences</p> <p>Transcriptional Network Analysis Reveals the Role of miR-223-5p During Diabetic Corneal Epithelial Regeneration.</p> <p>"Published figure using CD45 monoclonal antibody (Product # 63-0451-82) in Immunocytochemistry"</p> <p>Authors: Zhang Y,Dou S,Qi X,Zhang Z,Qiao Y,Wang Y,Xie J,Jiang H,Zhang B,Zhou Q,Wang Q,Xie L</p>	<p>Year</p> <p>2023</p>
--	-------------------------

View more IHC (F) references on thermofisher.com

More applications with references on thermofisher.com

- ICC/IF (9)
- Flow (195)

For Research Use Only. Not for use in diagnostic procedures. Not for resale without express authorization. Products are warranted to operate or perform substantially in conformance with published Product specifications in effect at the time of sale, as set forth in the Production documentation, specifications and/or accompanying package inserts ("Documentation"). No claim of suitability for use in applications regulated by FDA is made. The warranty provided herein is valid only when used by properly trained individuals. Unless otherwise stated in the Documentation, this warranty is limited to one year from date of shipment when the Product is subjected to normal, proper and intended usage. This warranty does not extend to anyone other than the Buyer. Any model or sample furnished to Buyer is merely illustrative of the general type and quality of goods and does not represent that any Product will conform to such model or sample. NO OTHER WARRANTIES, EXPRESS OR IMPLIED, ARE GRANTED INCLUDING WITHOUT LIMITATION, IMPLIED WARRANTIES OF MERCHANTABILITY, FITNESS FOR ANY PARTICULAR PURPOSE, OR NON INFRINGEMENT. BUYER'S EXCLUSIVE REMEDY FOR NON-CONFORMING PRODUCTS DURING THE WARRANTY PERIOD IS LIMITED TO REPAIR, REPLACEMENT OF OR REFUND FOR THE NON-CONFORMING PRODUCT(S) AT SELLER'S SOLE OPTION. THERE IS NO OBLIGATION TO REPAIR, REPLACE OR REFUND FOR PRODUCTS AS THE RESULT OF (I) ACCIDENT, DISASTER OR EVENT OF FORCE MAJEURE, (II) MISUSE, FAULT OR NEGLIGENCE OF OR BY BUYER, (III) USE OF THE PRODUCTS IN A MANNER FOR WHICH THEY WERE NOT DESIGNED, OR (IV) IMPROPER STORAGE AND HANDLING OF THE PRODUCTS. Unless otherwise expressly stated on the Product or in the documentation accompanying the Product, the Product is intended for research only and is not to be used for any other purpose, including without limitation, unauthorized commercial uses, in vitro diagnostic uses, ex vivo or in vivo therapeutic uses, or any type of consumption by or application to human or animals.