

# CD205 Monoclonal Antibody (205yekta), Super Bright™ 600, eBioscience™

Product Details	
Size	100 µg
Species Reactivity	Mouse
Host/Isotype	Rat / IgG2a, kappa
Recommended Isotype Control	Rat IgG2a kappa Isotype Control (eBR2a), Super Bright™ 600, eBioscience™
Class	Monoclonal
Type	Antibody
Clone	205yekta
Conjugate	Super Bright™ 600
Form	Liquid
Concentration	0.2 mg/mL
Purification	Affinity chromatography
Storage buffer	PBS, pH 7.2, with BSA
Contains	0.09% sodium azide
Storage conditions	4° C, store in dark, DO NOT FREEZE!
RRID	AB_2762773

Applications	Tested Dilution	Publications
Flow Cytometry (Flow)	0.125 µg/test	-

## Product Specific Information

Description: The 205yekta antibody reacts with mouse CD205, also known as DEC-205 (dendritic and epithelial cells, 205 kDa). CD205 is an integral membrane glycoprotein involved in antigen uptake, trafficking and presentation that improves the induction of antigen-specific T cell immunity. CD205 is highly expressed by CD8+ dendritic cells (DCs) and also expressed at different levels by bone marrow Gr1+ cells, Langerhans cells, (BMDC) bone marrow derived DCs and thymic epithelial cells.

CD205 has been shown to bind to PE-Cy5.5 antibody and streptavidin conjugates; therefore, this format should not be used on CD205+ dendritic cells.

Applications Reported: This 205yekta antibody has been reported for use in flow cytometric analysis.

Applications Tested: This 205yekta antibody has been tested by flow cytometric analysis of mouse bone marrow cells. This may be used at less than or equal to 0.125 µg per test. A test is defined as the amount (µg) of antibody that will stain a cell sample in a final volume of 100 µL. Cell number should be determined empirically but can range from 10<sup>5</sup> to 10<sup>8</sup> cells/test. It is recommended that the antibody be carefully titrated for optimal performance in the assay of interest.

Super Bright 600 is a tandem dye that can be excited with the violet laser line (405 nm) and emits at 600 nm. We recommend using a 610/20 bandpass filter. Please make sure that your instrument is capable of detecting this fluorochrome.

When using two or more Super Bright dye-conjugated antibodies in a staining panel, it is recommended to use Super Bright

Complete Staining Buffer (Product # SB-4401) to minimize any non-specific polymer interactions. Please refer to the datasheet for Super Bright Staining Buffer for more information.

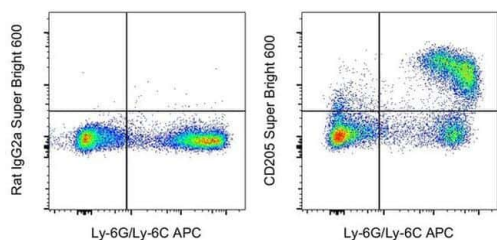
Light sensitivity: This tandem dye is sensitive to photo-induced oxidation. Please protect this vial and stained samples from light.

Fixation: Samples can be stored in IC Fixation Buffer (Product # 00-8222-49) (100  $\mu$ L of cell sample + 100  $\mu$ L of IC Fixation Buffer) or 1-step Fix/Lyse Solution (Product # 00-5333-57) for up to 3 days in the dark at 4°C with minimal impact on brightness and FRET efficiency/compensation. Some generalizations regarding fluorophore performance after fixation can be made, but clone specific performance should be determined empirically.

Excitation: 405 nm; Emission: 600 nm; Laser: Violet Laser

Super Bright Polymer Dyes are sold under license from Becton, Dickinson and Company.

## Product Images For CD205 Monoclonal Antibody (205yekta), Super Bright™ 600, eBioscience™



### CD205 Antibody (63-2051-82) in Flow

C57BL/6 mouse bone marrow cells were stained with Ly-6G/Ly-6C Monoclonal Antibody, APC (Product # 17-5931-82) and 0.06  $\mu$ g of Rat IgG2a kappa Isotype Control, Super Bright 600 (Product # 63-4321-82) (left) or 0.06  $\mu$ g of CD205 Monoclonal Antibody, Super Bright 600 (right). Total viable cells were used for analysis.

For Research Use Only. Not for use in diagnostic procedures. Not for resale without express authorization. Products are warranted to operate or perform substantially in conformance with published Product specifications in effect at the time of sale, as set forth in the Production documentation, specifications and/or accompanying package inserts ("Documentation"). No claim of suitability for use in applications regulated by FDA is made. The warranty provided herein is valid only when used by properly trained individuals. Unless otherwise stated in the Documentation, this warranty is limited to one year from date of shipment when the Product is subjected to normal, proper and intended usage. This warranty does not extend to anyone other than the Buyer. Any model or sample furnished to Buyer is merely illustrative of the general type and quality of goods and does not represent that any Product will conform to such model or sample. NO OTHER WARRANTIES, EXPRESS OR IMPLIED, ARE GRANTED INCLUDING WITHOUT LIMITATION, IMPLIED WARRANTIES OF MERCHANTABILITY, FITNESS FOR ANY PARTICULAR PURPOSE, OR NON INFRINGEMENT. BUYER'S EXCLUSIVE REMEDY FOR NON-CONFORMING PRODUCTS DURING THE WARRANTY PERIOD IS LIMITED TO REPAIR, REPLACEMENT OF OR REFUND FOR THE NON-CONFORMING PRODUCT(S) AT SELLER'S SOLE OPTION. THERE IS NO OBLIGATION TO REPAIR, REPLACE OR REFUND FOR PRODUCTS AS THE RESULT OF (I) ACCIDENT, DISASTER OR EVENT OF FORCE MAJEURE, (II) MISUSE, FAULT OR NEGLIGENCE OF OR BY BUYER, (III) USE OF THE PRODUCTS IN A MANNER FOR WHICH THEY WERE NOT DESIGNED, OR (IV) IMPROPER STORAGE AND HANDLING OF THE PRODUCTS. Unless otherwise expressly stated on the Product or in the documentation accompanying the Product, the Product is intended for research only and is not to be used for any other purpose, including without limitation, unauthorized commercial uses, in vitro diagnostic uses, ex vivo or in vivo therapeutic uses, or any type of consumption by or application to human or animals.