

KLRG1 Monoclonal Antibody (13F12F2), Super Bright™ 600, eBioscience™

Product Details	
Size	100 Tests
Species Reactivity	Human
Host/Isotype	Mouse / IgG2a, kappa
Recommended Isotype Control	Mouse IgG2a kappa Isotype Control (eBM2a), Super Bright™ 600, eBioscience™
Class	Monoclonal
Type	Antibody
Clone	13F12F2
Conjugate	Super Bright™ 600
Form	Liquid
Concentration	5 µL/Test
Purification	Affinity chromatography
Storage buffer	PBS, pH 7.2, with BSA
Contains	0.09% sodium azide
Storage conditions	4° C, store in dark, DO NOT FREEZE!
RRID	AB_2717065

Applications	Tested Dilution	Publications
Flow Cytometry (Flow)	5 µL (0.25 µg)/test	1 Publication

Product Specific Information

Description: This 13F12F2 monoclonal antibody reacts with human killer cell lectin-like receptor subfamily G, member 1 (KLRG1), a type II transmembrane inhibitor receptor of the C-type lectin superfamily that contains an ITIM domain. This inhibitory receptor is expressed on subsets of gamma-delta T cells, NK (CD56dim), CD8+ and CD4+ T Cells. KLRG1 is expressed primarily by cells with an effector/memory phenotype that are short-lived, but capable of immediate effector cell function. Cadherin-E, -N, and -R are ligands for KLRG1. Cadherin/KLRG1 interaction inhibits cytolytic activity and proliferation. The percentage of KLRG1 positive cells can vary considerably, depending on antigen experience.

The clones 13F12F2 and 13A2 appear to recognize a similar epitope based on cross-blocking studies.

Applications Reported: This 13F12F2 antibody has been reported for use in flow cytometric analysis.

Applications Tested: This 13F12F2 antibody has been pre-diluted and tested by flow cytometric analysis of normal human peripheral blood cells. This may be used at 5 µL (0.25 µg) per test. A test is defined as the amount (µg) of antibody that will stain a cell sample in a final volume of 100 µL. Cell number should be determined empirically but can range from 10⁵ to 10⁸ cells/test.

Super Bright 600 is a tandem dye that can be excited with the violet laser line (405 nm) and emits at 600 nm. We recommend using a 610/20 bandpass filter. Please make sure that your instrument is capable of detecting this fluorochrome.

When using two or more Super Bright dye-conjugated antibodies in a staining panel, it is recommended to use Super Bright

Complete Staining Buffer (Product # SB-4401) to minimize any non-specific polymer interactions. Please refer to the datasheet for Super Bright Staining Buffer for more information.

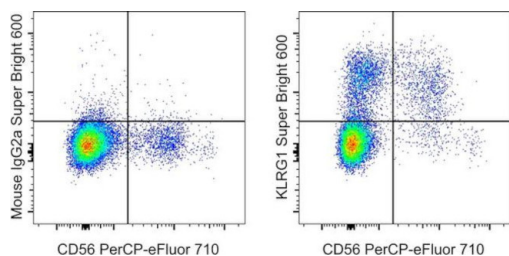
Light sensitivity: This tandem dye is sensitive to photo-induced oxidation. Please protect this vial and stained samples from light.

Fixation: Samples can be stored in IC Fixation Buffer (Product # 00-8222) (100 μ L of cell sample + 100 μ L of IC Fixation Buffer) or 1-step Fix/Lyse Solution (Product # 00-5333) for up to 3 days in the dark at 4°C with minimal impact on brightness and FRET efficiency/compensation. Some generalizations regarding fluorophore performance after fixation can be made, but clone specific performance should be determined empirically.

Excitation: 405 nm; Emission: 600 nm; Laser: Violet Laser

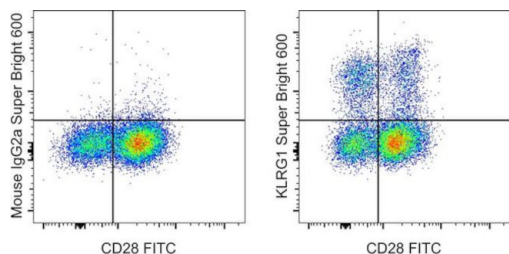
Super Bright Polymer Dyes are sold under license from Becton, Dickinson and Company.

Product Images For KLRG1 Monoclonal Antibody (13F12F2), Super Bright™ 600, eBioscience™



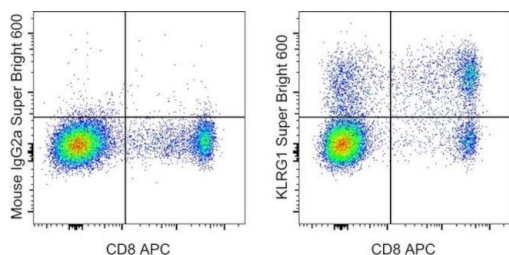
KLRG1 Antibody (63-9488-42) in Flow

Normal human peripheral blood cells were stained with CD56 Monoclonal Antibody, PerCP-eFluor 710 (Product # 46-0567-42) and Mouse IgG2a kappa Isotype Control, Super Bright 600 (Product # 63-4724-82) (left) or KLRG1 Monoclonal Antibody, Super Bright 600 (right). Cells in the lymphocyte gate were used for analysis.



KLRG1 Antibody (63-9488-42) in Flow

Normal human peripheral blood cells were stained with CD28 Monoclonal Antibody, FITC (Product # 11-0289-42) and Mouse IgG2a kappa Isotype Control, Super Bright 600 (Product # 63-4724-82) (left) or KLRG1 Monoclonal Antibody, Super Bright 600 (right). Cells in the lymphocyte gate were used for analysis.



KLRG1 Antibody (63-9488-42) in Flow

Normal human peripheral blood cells were stained with CD8a Monoclonal Antibody, APC (Product # 17-0087-42) and Mouse IgG2a kappa Isotype Control, Super Bright 600 (Product # 63-4724-82) (left) or KLRG1 Monoclonal Antibody, Super Bright 600 (right). Cells in the lymphocyte gate were used for analysis.

[View more figures on thermofisher.com](https://www.thermofisher.com)

Flow Cytometry (1)

STAR protocols

Isolation of tumor-resident CD8⁺ T cells from human lung tumors.

"Published figure using KLRG1 monoclonal antibody (Product # 63-9488-42) in Flow Cytometry"

Authors: Corgnac S, Lecluse Y, Mami-Chouaib F

Year
2021

For Research Use Only. Not for use in diagnostic procedures. Not for resale without express authorization. Products are warranted to operate or perform substantially in conformance with published Product specifications in effect at the time of sale, as set forth in the Production documentation, specifications and/or accompanying package inserts ("Documentation"). No claim of suitability for use in applications regulated by FDA is made. The warranty provided herein is valid only when used by properly trained individuals. Unless otherwise stated in the Documentation, this warranty is limited to one year from date of shipment when the Product is subjected to normal, proper and intended usage. This warranty does not extend to anyone other than the Buyer. Any model or sample furnished to Buyer is merely illustrative of the general type and quality of goods and does not represent that any Product will conform to such model or sample. NO OTHER WARRANTIES, EXPRESS OR IMPLIED, ARE GRANTED INCLUDING WITHOUT LIMITATION, IMPLIED WARRANTIES OF MERCHANTABILITY, FITNESS FOR ANY PARTICULAR PURPOSE, OR NON INFRINGEMENT. BUYER'S EXCLUSIVE REMEDY FOR NON-CONFORMING PRODUCTS DURING THE WARRANTY PERIOD IS LIMITED TO REPAIR, REPLACEMENT OF OR REFUND FOR THE NON-CONFORMING PRODUCT(S) AT SELLER'S SOLE OPTION. THERE IS NO OBLIGATION TO REPAIR, REPLACE OR REFUND FOR PRODUCTS AS THE RESULT OF (I) ACCIDENT, DISASTER OR EVENT OF FORCE MAJEURE, (II) MISUSE, FAULT OR NEGLIGENCE OF OR BY BUYER, (III) USE OF THE PRODUCTS IN A MANNER FOR WHICH THEY WERE NOT DESIGNED, OR (IV) IMPROPER STORAGE AND HANDLING OF THE PRODUCTS. Unless otherwise expressly stated on the Product or in the documentation accompanying the Product, the Product is intended for research only and is not to be used for any other purpose, including without limitation, unauthorized commercial uses, in vitro diagnostic uses, ex vivo or in vivo therapeutic uses, or any type of consumption by or application to human or animals.