

CD235a (Glycophorin A) Monoclonal Antibody (HIR2 (GA-R2)), Super Bright™ 600, eBioscience™

Product Details	
Size	25 Tests
Species Reactivity	Human
Host/Isotype	Mouse / IgG2b, kappa
Recommended Isotype Control	Mouse IgG2b kappa Isotype Control (eBMG2b), Super Bright™ 600, eBioscience™
Class	Monoclonal
Type	Antibody
Clone	HIR2 (GA-R2)
Conjugate	Super Bright™ 600
Excitation/Emission Max	414/601 nm
Form	Liquid
Concentration	5 µL/Test
Purification	Affinity chromatography
Storage buffer	PBS, pH 7.2, with BSA
Contains	0.09% sodium azide
Storage conditions	4° C, store in dark, DO NOT FREEZE!
RRID	AB_2717072

Applications	Tested Dilution	Publications
Flow Cytometry (Flow)	5 µL (0.015 µg)/test	17 Publications

Product Specific Information

Description: The HIR2 monoclonal antibody reacts with human glycophorin A, sialoglycoproteins expressed by erythroid precursors and mature circulating red cells.

Applications Reported: This HIR2 antibody has been reported for use in flow cytometric analysis.

Applications Tested: This HIR2 antibody has been pre-diluted and tested by flow cytometric analysis of normal human peripheral blood cells. Binding of this antibody to red cells at high antibody concentration causes cell agglutination. This may be used at 5 µL (0.015 µg) per test. A test is defined as the amount (µg) of antibody that will stain a cell sample in a final volume of 100 µL. Cell number should be determined empirically but can range from 10⁵ to 10⁸ cells/test.

Super Bright 600 is a tandem dye that can be excited with the violet laser line (405 nm) and emits at 600 nm. We recommend using a 610/20 bandpass filter. Please make sure that your instrument is capable of detecting this fluorochrome.

When using two or more Super Bright dye-conjugated antibodies in a staining panel, it is recommended to use Super Bright Complete Staining Buffer (Product # SB-4401) to minimize any non-specific polymer interactions. Please refer to the datasheet for Super Bright Staining Buffer for more information.

Light sensitivity: This tandem dye is sensitive to photo-induced oxidation. Please protect this vial and stained samples from light.

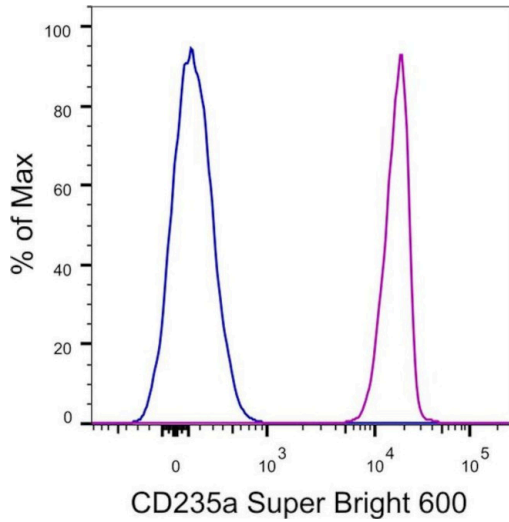
Fixation: Samples can be stored in IC Fixation Buffer (Product # 00-8222) (100 µL of cell sample + 100 µL of IC Fixation

Buffer) or 1-step Fix/Lyse Solution (Product # 00-5333) for up to 3 days in the dark at 4°C with minimal impact on brightness and FRET efficiency/compensation. Some generalizations regarding fluorophore performance after fixation can be made, but clone specific performance should be determined empirically.

Excitation: 405 nm; Emission: 600 nm; Laser: Violet Laser

Super Bright Polymer Dyes are sold under license from Becton, Dickinson and Company.

Product Images For CD235a (Glycophorin A) Monoclonal Antibody (HIR2 (GA-R2)), Super Bright™ 600, eBioscience™



CD235a (Glycophorin A) Antibody (63-9987-41) in Flow

Normal human peripheral blood cells were stained with Mouse IgG2b kappa Isotype Control, Super Bright 600 (Product # 63-4732) (blue histogram) or CD235a (Glycophorin A) Monoclonal Antibody, Super Bright 600 63-9987) (Product # (purple histogram). Cells in the erythrocyte gate were used for analysis.

[View more figures on thermofisher.com](#)

17 References

Flow Cytometry (17)

Annals of translational medicine

Human serum albumin promotes self-renewal and expansion of umbilical cord blood CD34⁺ hematopoietic stem/progenitor cells.

"Published figure using CD235a (Glycophorin A) monoclonal antibody (Product # 63-9987-42) in Flow Cytometry"

Authors: Hua J, Jiao T, Qiao Y, Zhang S, Xiao T, Zhang Y, Yan J

Year
2023

Frontiers in cell and developmental biology

Autophagy regulated by the HIF/REDD1/mTORC1 signaling is progressively increased during erythroid differentiation under hypoxia.

"Published figure using CD235a (Glycophorin A) monoclonal antibody (Product # 63-9987-42) in Flow Cytometry"

Authors: Li J, Quan C, He YL, Cao Y, Chen Y, Wang YF, Wu LY

Year
2022

[View more Flow references on thermofisher.com](#)

More applications with references on thermofisher.com

For Research Use Only. Not for use in diagnostic procedures. Not for resale without express authorization. Products are warranted to operate or perform substantially in conformance with published Product specifications in effect at the time of sale, as set forth in the Production documentation, specifications and/or accompanying package inserts ("Documentation"). No claim of suitability for use in applications regulated by FDA is made. The warranty provided herein is valid only when used by properly trained individuals. Unless otherwise stated in the Documentation, this warranty is limited to one year from date of shipment when the Product is subjected to normal, proper and intended usage. This warranty does not extend to anyone other than the Buyer. Any model or sample furnished to Buyer is merely illustrative of the general type and quality of goods and does not represent that any Product will conform to such model or sample. NO OTHER WARRANTIES, EXPRESS OR IMPLIED, ARE GRANTED INCLUDING WITHOUT LIMITATION, IMPLIED WARRANTIES OF MERCHANTABILITY, FITNESS FOR ANY PARTICULAR PURPOSE, OR NON-INFRINGEMENT. BUYER'S EXCLUSIVE REMEDY FOR NON-CONFORMING PRODUCTS DURING THE WARRANTY PERIOD IS LIMITED TO REPAIR, REPLACEMENT OF OR REFUND FOR THE NON-CONFORMING PRODUCT(S) AT SELLER'S SOLE OPTION. THERE IS NO OBLIGATION TO REPAIR, REPLACE OR REFUND FOR PRODUCTS AS THE RESULT OF (I) ACCIDENT, DISASTER OR EVENT OF FORCE MAJEURE, (II) MISUSE, FAULT OR NEGLIGENCE OF OR BY BUYER, (III) USE OF THE PRODUCTS IN A MANNER FOR WHICH THEY WERE NOT DESIGNED, OR (IV) IMPROPER STORAGE AND HANDLING OF THE PRODUCTS. Unless otherwise expressly stated on the Product or in the documentation accompanying the Product, the Product is intended for research only and is not to be used for any other purpose, including without limitation, unauthorized commercial uses, in vitro diagnostic uses, ex vivo or in vivo therapeutic uses, or any type of consumption by or application to human or animals.