

CD163 Monoclonal Antibody (eBioGHI/61 (GHI/61)), Super Bright™ 645, eBioscience™

Product Details	
Size	100 Tests
Species Reactivity	Human
Host/Isotype	Mouse / IgG1, kappa
Recommended Isotype Control	Mouse IgG1 kappa Isotype Control (P3.6.2.8.1), Super Bright™ 645, eBioscience™
Class	Monoclonal
Type	Antibody
Clone	eBioGHI/61 (GHI/61)
Conjugate	Super Bright™ 645
Excitation/Emission Max	414/645 nm
Form	Liquid
Concentration	5 µL/Test
Purification	Affinity chromatography
Storage buffer	PBS, pH 7.2, with BSA
Contains	0.09% sodium azide
Storage conditions	4°C, store in dark, DO NOT FREEZE!
RRID	AB_2762566

Applications	Tested Dilution	Publications
Immunohistochemistry (IHC)	-	1 Publication
Flow Cytometry (Flow)	5 µL (1.0 µg)/Test	15 Publications

Product Specific Information

Description: The eBioGHI/61 monoclonal antibody reacts with human CD163 (Haemoglobin Scavenger Receptor, M130), a member of the macrophage scavenger receptor family. CD163 is expressed by tissue macrophages, circulating blood monocytes, and some reports suggest that it may also be expressed by haematopoietic progenitor cells. CD163 functions as a high affinity scavenger receptor for the complex of haemoglobin and haptoglobin which forms to clear haemoglobin from the blood. The high affinity for CD163 is specific for the haemoglobin-haptoglobin complex, whereas haemoglobin or haptoglobin display no to low affinity toward CD163. Upon ligand binding, CD163 initiates signal transduction which leads to the production of IL-6 and IL-10. Furthermore, it has been demonstrated that cytokines such as IL-6 and IL-10 can induce expression of CD163, whereas proinflammatory stimuli, such as LPS or TNF alpha, can cause shedding of a soluble form of CD163, whose function is unclear.

Applications Reported: This eBioGHI/61 (GHI/61) antibody has been reported for use in flow cytometric analysis.

Applications Tested: This eBioGHI/61 (GHI/61) antibody has been pre-diluted and tested by flow cytometric analysis of normal human peripheral blood cells. This may be used at 5 µL (1.0 µg) per test. A test is defined as the amount (µg) of antibody that will stain a cell sample in a final volume of 100 µL. Cell number should be determined empirically but can range from 10⁵ to 10⁸ cells/test.

Super Bright 645 is a tandem dye that can be excited with the violet laser line (405 nm) and emits at 645 nm. We recommend using a 660/20 bandpass filter. Please make sure that your instrument is capable of detecting this fluorochrome.

When using two or more Super Bright dye-conjugated antibodies in a staining panel, it is recommended to use Super Bright Complete Staining Buffer (Product # SB-4401) to minimize any non-specific polymer interactions. Please refer to the datasheet for Super Bright Staining Buffer for more information.

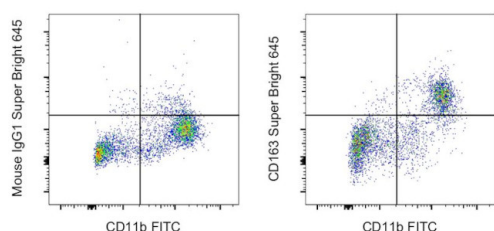
Light sensitivity: This tandem dye is sensitive to photo-induced oxidation. Please protect this vial and stained samples from light.

Fixation: Samples can be stored in IC Fixation Buffer (Product # 00-8222-49) (100 μ L of cell sample + 100 μ L of IC Fixation Buffer) or 1-step Fix/Lyse Solution (Product # 00-5333-57) for up to 3 days in the dark at 4°C with minimal impact on brightness and FRET efficiency/compensation. Some generalizations regarding fluorophore performance after fixation can be made, but clone specific performance should be determined empirically.

Excitation: 405 nm; Emission: 645 nm; Laser: Violet Laser

Super Bright Polymer Dyes are sold under license from Becton, Dickinson and Company.

Product Images For CD163 Monoclonal Antibody (eBioGHI/61 (GHI/61)), Super Bright™ 645, eBioscience™



CD163 Antibody (64-1639-42) in Flow

Normal human peripheral blood cells were stained with CD11b Monoclonal Antibody, FITC (Product # 11-0118-42) and Mouse IgG1 kappa Isotype Control, Super Bright 645 (Product # 64-4714-82) (left) or CD163 Monoclonal Antibody, Super Bright 645 (right). Cells in the monocyte gate were used for analysis.

[View more figures on thermofisher.com](https://www.thermofisher.com)

16 References

Immunohistochemistry (1)

Cell death & disease

CCL5 derived from tumor-associated macrophages promotes prostate cancer stem cells and metastasis via activating -catenin/STAT3 signaling.

"Published figure using CD163 monoclonal antibody (Product # 64-1639-42) in Immunohistochemistry"

Authors: Huang R,Wang S,Wang N,Zheng Y,Zhou J,Yang B,Wang X,Zhang J,Guo L,Wang S,Chen Z,Wang Z,Xiang S

Year
2020

Flow Cytometry (15)

Neoplasia (New York, N.Y.)

IL-6 facilitates cross-talk between epithelial cells and tumor-associated macrophages in Helicobacter pylori-linked gastric carcinogenesis.

"Published figure using CD163 monoclonal antibody (Product # 64-1639-42) in Flow Cytometry"

Authors: Yu B,de Vos D,Guo X,Peng S,Xie W,Peppelenbosch MP,Fu Y,Fuhler GM

Year
2024

International journal of experimental pathology

Inhibition of inflammation and infiltration of M2 macrophages in NSCLC through the ATF3/CSF1 axis: Role of miR-27a-3p.

"Published figure using CD163 monoclonal antibody (Product # 64-1639-42) in Flow Cytometry"

Authors: Zhou B,Xu Y,Xu L,Kong Y,Li K,Chen B,Li J

Year
2023

[View more Flow references on thermofisher.com](#)

More applications with references on thermofisher.com

For Research Use Only. Not for use in diagnostic procedures. Not for resale without express authorization. Products are warranted to operate or perform substantially in conformance with published Product specifications in effect at the time of sale, as set forth in the Production documentation, specifications and/or accompanying package inserts ("Documentation"). No claim of suitability for use in applications regulated by FDA is made. The warranty provided herein is valid only when used by properly trained individuals. Unless otherwise stated in the Documentation, this warranty is limited to one year from date of shipment when the Product is subjected to normal, proper and intended usage. This warranty does not extend to anyone other than the Buyer. Any model or sample furnished to Buyer is merely illustrative of the general type and quality of goods and does not represent that any Product will conform to such model or sample. NO OTHER WARRANTIES, EXPRESS OR IMPLIED, ARE GRANTED INCLUDING WITHOUT LIMITATION, IMPLIED WARRANTIES OF MERCHANTABILITY, FITNESS FOR ANY PARTICULAR PURPOSE, OR NON INFRINGEMENT. BUYER'S EXCLUSIVE REMEDY FOR NON-CONFORMING PRODUCTS DURING THE WARRANTY PERIOD IS LIMITED TO REPAIR, REPLACEMENT OF OR REFUND FOR THE NON-CONFORMING PRODUCT(S) AT SELLER'S SOLE OPTION. THERE IS NO OBLIGATION TO REPAIR, REPLACE OR REFUND FOR PRODUCTS AS THE RESULT OF (I) ACCIDENT, DISASTER OR EVENT OF FORCE MAJEURE, (II) MISUSE, FAULT OR NEGLIGENCE OF OR BY BUYER, (III) USE OF THE PRODUCTS IN A MANNER FOR WHICH THEY WERE NOT DESIGNED, OR (IV) IMPROPER STORAGE AND HANDLING OF THE PRODUCTS. Unless otherwise expressly stated on the Product or in the documentation accompanying the Product, the Product is intended for research only and is not to be used for any other purpose, including without limitation, unauthorized commercial uses, in vitro diagnostic uses, ex vivo or in vivo therapeutic uses, or any type of consumption by or application to human or animals.