

CD52 Monoclonal Antibody (CF1D12), Super Bright™ 702, eBioscience™

Product Details	
Size	25 Tests
Host/Isotype	Mouse / IgG3, kappa
Class	Monoclonal
Type	Antibody
Clone	CF1D12
Conjugate	Super Bright™ 702
Excitation/Emission Max	413/702 nm
Immunogen	Human CD52
Form	Liquid
Concentration	5 µL/Test
Storage conditions	4° C, store in dark, DO NOT FREEZE!
RRID	AB_2762575

Applications	Tested Dilution	Publications
Flow Cytometry (Flow)	5 µL (0.25 µg)/test	-

Product Specific Information

Description: This CF1D12 monoclonal antibody reacts with human CD52, a cell surface glycoprotein expressed in the immune and reproductive systems. CF1D12 is thought to recognize the carbohydrate region of CD52, not the protein core of the molecule. Tissue-specific modifications of the glycan structure may alter epitope recognition in certain applications. For example, this CF1D12 clone has been reported to recognize human sperm glycoforms of CD52 by western blot, but not by flow cytometry. The immunogen used to generate this antibody was human CD52. ^M

Applications Reported: This CF1D12 antibody has been reported for use in flow cytometric analysis.^M

Applications Tested: This CF1D12 antibody has been pre-diluted and tested by flow cytometric analysis of normal human peripheral blood cells. This may be used at 5 µL (0.25 µg) per test. A test is defined as the amount (µg) of antibody that will stain a cell sample in a final volume of 100 µL. Cell number should be determined empirically but can range from 10^5 to 10^8 cells/test.^M

Super Bright 702 is a tandem dye that can be excited with the violet laser line (405 nm) and emits at 702 nm. We recommend using a 710/50 bandpass filter. Please make sure that your instrument is capable of detecting this fluorochrome.^M

When using two or more Super Bright dye-conjugated antibodies in a staining panel, it is recommended to use Super Bright Complete Staining Buffer (Product # SB-4401) to minimize any non-specific polymer interactions. Please refer to the datasheet for Super Bright Staining Buffer for more information.^M

Light sensitivity: This tandem dye is sensitive to photo-induced oxidation. Please protect this vial and stained samples from light.^M

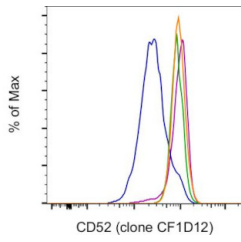
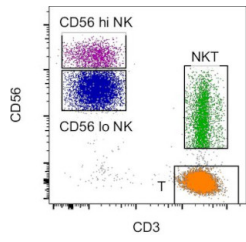
Fixation: Samples can be stored in IC Fixation Buffer (Product # 00-8222-49) (100 µL of cell sample + 100 µL of IC Fixation Buffer) or 1-step Fix/Lyse Solution (Product # 00-5333-57) for up to 3 days in the dark at 4°C with minimal impact on brightness and FRET efficiency/compensation. Some generalizations regarding fluorophore performance after fixation can be made, but clone specific performance should be determined empirically.^M

Excitation: 405 nm; Emission: 702 nm; Laser: Violet Laser ^M

^M

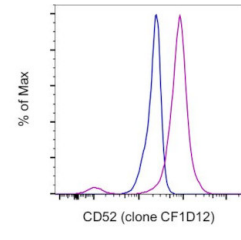
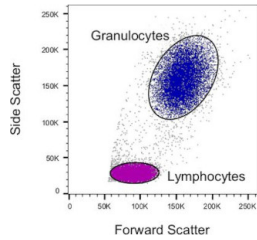
Super Bright Polymer Dyes are sold under license from Becton, Dickinson and Company.

Product Images For CD52 Monoclonal Antibody (CF1D12), Super Bright™ 702, eBioscience™



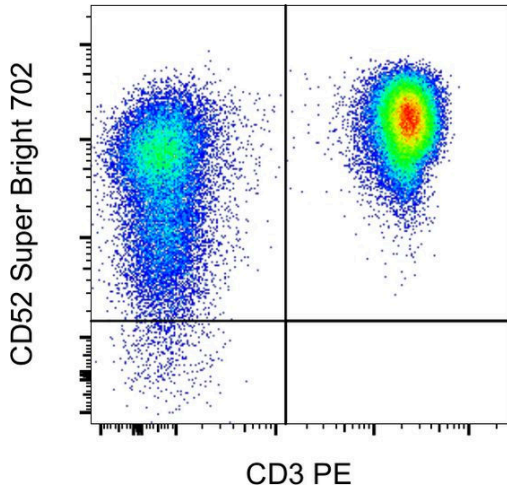
CD52 Antibody (67-0529-41)

Staining of human peripheral blood cells. As expected based on known expression patterns, CD52 clone CF1D12 stains CD56(lo/dim) NK cells with lower intensity compared with CD56(hi/bright) NK, NKT, and T cells. Details: Normal human peripheral blood cells were surface stained with CD52 (clone CF1D12), CD56 (clone TULY56), CD3 (clone UCHT1), and CD19 (clone HIB19). CD3+ T cells (orange histogram), CD3+ CD56+ NKT cells (green histogram), and CD56(hi/bright) CD3- NK cells (purple histogram) expressed a higher level of CD52 compared with CD56(lo/dim) CD3- NK cells. CD19- lymphocytes were used for analysis. {RE}



CD52 Antibody (67-0529-41)

Staining of human peripheral blood cells. As expected based on known expression patterns, CD52 clone CF1D12 stains lymphocytes with higher intensity compared with granulocytes. Details: Normal human blood was lysed using 10X RBC Lysis Buffer. The cells were then stained with CD52 (clone CF1D12). Cells in the lymphocyte (purple histogram) or granulocyte (blue histogram) were used for analysis. {RE}



CD52 Antibody (67-0529-41) in Flow

Normal human peripheral blood cells were stained with CD3 Monoclonal Antibody, PE (Product # 12-0037-42) and CD52 Monoclonal Antibody, Super Bright 702. Cells in the lymphocyte gate were used for analysis.

For Research Use Only. Not for use in diagnostic procedures. Not for resale without express authorization. Products are warranted to operate or perform substantially in conformance with published Product specifications in effect at the time of sale, as set forth in the Production documentation, specifications and/or accompanying package inserts ("Documentation"). No claim of suitability for use in applications regulated by FDA is made. The warranty provided herein is valid only when used by properly trained individuals. Unless otherwise stated in the Documentation, this warranty is limited to one year from date of shipment when the Product is subjected to normal, proper and intended usage. This warranty does not extend to anyone other than the Buyer. Any model or sample furnished to Buyer is merely illustrative of the general type and quality of goods and does not represent that any Product will conform to such model or sample. NO OTHER WARRANTIES, EXPRESS OR IMPLIED, ARE GRANTED INCLUDING WITHOUT LIMITATION, IMPLIED WARRANTIES OF MERCHANTABILITY, FITNESS FOR ANY PARTICULAR PURPOSE, OR NON INFRINGEMENT. BUYER'S EXCLUSIVE REMEDY FOR NON-CONFORMING PRODUCTS DURING THE WARRANTY PERIOD IS LIMITED TO REPAIR, REPLACEMENT OF OR REFUND FOR THE NON-CONFORMING PRODUCT(S) AT SELLER'S SOLE OPTION. THERE IS NO OBLIGATION TO REPAIR, REPLACE OR REFUND FOR PRODUCTS AS THE RESULT OF (I) ACCIDENT, DISASTER OR EVENT OF FORCE MAJEURE, (II) MISUSE, FAULT OR NEGLIGENCE OF OR BY BUYER, (III) USE OF THE PRODUCTS IN A MANNER FOR WHICH THEY WERE NOT DESIGNED, OR (IV) IMPROPER STORAGE AND HANDLING OF THE PRODUCTS. Unless otherwise expressly stated on the Product or in the documentation accompanying the Product, the Product is intended for research only and is not to be used for any other purpose, including without limitation, unauthorized commercial uses, in vitro diagnostic uses, ex vivo or in vivo therapeutic uses, or any type of consumption by or application to human or animals.