

CD366 (TIM3) Monoclonal Antibody (F38-2E2), Super Bright™ 702, eBioscience™

Product Details	
Size	100 Tests
Species Reactivity	Human
Host/Isotype	Mouse / IgG1, kappa
Recommended Isotype Control	Mouse IgG1 kappa Isotype Control (P3.6.2.8.1), Super Bright™ 702, eBioscience™
Class	Monoclonal
Type	Antibody
Clone	F38-2E2
Conjugate	Super Bright™ 702
Excitation/Emission Max	413/702 nm
Form	Liquid
Concentration	5 µL/Test
Purification	Affinity chromatography
Storage buffer	PBS, pH 7.2, with BSA
Contains	0.09% sodium azide
Storage conditions	4° C, store in dark, DO NOT FREEZE!
RRID	AB_2717167

Applications	Tested Dilution	Publications
Western Blot (WB)	-	1 Publication
Flow Cytometry (Flow)	5 µL (0.5 µg)/test	4 Publications
ELISA (ELISA)	-	1 Publication

Product Specific Information

Description: This F38-2E2 monoclonal antibody reacts with human CD366, also known as T cell immunoglobulin and mucin domain-containing protein 3 (TIM3) or HAVCR2. This cell surface receptor is expressed on activated CD4+ T cell subsets (e.g. Th1, Th17, and Treg), CD8+ T cells, monocytes, dendritic cells, and mast cells. Due to alternative splicing, CD366 exists as membrane-bound and soluble forms. Galectin-9 has been identified as the ligand for CD366. In humans, this receptor negatively regulates CD4+ T cells, influencing the secretion of some Th1- and Th17-related cytokines. CD366 has also been implicated in tolerance, autoimmune disease (e.g. multiple sclerosis), and HIV infection.

Applications Reported: This F38-2E2 antibody has been reported for use in flow cytometric analysis.

Applications Tested: This F38-2E2 antibody has been pre-diluted and tested by flow cytometric analysis of stimulated normal human peripheral blood cells. This may be used at 5 µL (0.5 µg) per test. A test is defined as the amount (µg) of antibody that will stain a cell sample in a final volume of 100 µL. Cell number should be determined empirically but can range from 10⁵ to 10⁸ cells/test.

Super Bright 702 is a tandem dye that can be excited with the violet laser line (405 nm) and emits at 702 nm. We recommend using a 710/50 bandpass filter. Please make sure that your instrument is capable of detecting this fluorochrome.

When using two or more Super Bright dye-conjugated antibodies in a staining panel, it is recommended to use Super Bright Complete Staining Buffer (Product # SB-4401) to minimize any non-specific polymer interactions. Please refer to the datasheet for Super Bright Staining Buffer for more information.

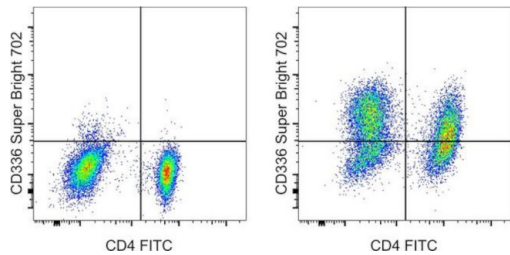
Light sensitivity: This tandem dye is sensitive to photo-induced oxidation. Please protect this vial and stained samples from light.

Fixation: Samples can be stored in IC Fixation Buffer (Product # 00-8222) (100 µL of cell sample + 100 µL of IC Fixation Buffer) or 1-step Fix/Lyse Solution (Product # 00-5333) for up to 3 days in the dark at 4°C with minimal impact on brightness and FRET efficiency/compensation. Some generalizations regarding fluorophore performance after fixation can be made, but clone specific performance should be determined empirically.

Excitation: 405 nm; Emission: 702 nm; Laser: Violet Laser

Super Bright Polymer Dyes are sold under license from Becton, Dickinson and Company.

Product Images For CD366 (TIM3) Monoclonal Antibody (F38-2E2), Super Bright™ 702, eBioscience™



CD366 (TIM3) Antibody (67-3109-42) in Flow

Normal human peripheral blood cells were unstimulated (left) or stimulated with CD3 and CD28 Monoclonal Antibodies, Functional Grade (Product # 16-0037 and 16-0289) for 3 days (right). Cells were then stained with CD4 Monoclonal Antibody, FITC (Product # 11-0047) and CD366 Monoclonal Antibody, Super Bright 702 (Product # 67-3109-42). Cells in the lymphocyte gate were used for analysis.

View more figures on thermofisher.com

Western Blot (1)

<p>The Biochemical journal</p> <p>Phosphatidylserine binding directly regulates TIM-3 function.</p> <p>"Published figure using CD366 (TIM3) monoclonal antibody (Product # 67-3109-42) in Western Blot"</p> <p>Authors: Smith CM,Li A,Krishnamurthy N,Lemmon MA</p>	<p>Year</p> <p>2021</p>
--	-------------------------

Flow Cytometry (4)

<p>EBioMedicine</p> <p>SLC1A1 mediated glutamine addiction and contributed to natural killer T-cell lymphoma progression with immunotherapeutic potential.</p> <p>"Published figure using CD366 (TIM3) monoclonal antibody (Product # 67-3109-42) in Flow Cytometry"</p> <p>Authors: Xiong J,Wang N,Zhong HJ,Cui BW,Cheng S,Sun R,Chen JY,Xu PP,Cai G,Wang L,Sun XJ,Huang JY,Zhao WL</p>	<p>Year</p> <p>2021</p>
<p>Oncoimmunology</p> <p>TIGIT⁺ TIM-3⁺ NK cells are correlated with NK cell exhaustion and disease progression in patients with hepatitis B virusrelated hepatocellular carcinoma.</p> <p>"Published figure using CD366 (TIM3) monoclonal antibody (Product # 67-3109-42) in Flow Cytometry"</p> <p>Authors: Yu L,Liu X,Wang X,Yan F,Wang P,Jiang Y,Du J,Yang Z</p>	<p>Year</p> <p>2021</p>

[View more Flow references on thermofisher.com](#)

ELISA (1)

<p>European journal of immunology</p> <p>TIM-3 is expressed on activated human CD4⁺ T cells and regulates Th1 and Th17 cytokines.</p> <p>"Published figure using CD366 (TIM3) monoclonal antibody (Product # 67-3109-42) in ELISA"</p> <p>Authors: Hastings WD,Anderson DE,Kassam N,Koguchi K,Greenfield EA,Kent SC,Zheng XX,Strom TB,Hafner DA,Kuchroo VK</p>	<p>Year</p> <p>2009</p>
--	-------------------------

More applications with references on thermofisher.com

For Research Use Only. Not for use in diagnostic procedures. Not for resale without express authorization. Products are warranted to operate or perform substantially in conformance with published Product specifications in effect at the time of sale, as set forth in the Production documentation, specifications and/or accompanying package inserts ("Documentation"). No claim of suitability for use in applications regulated by FDA is made. The warranty provided herein is valid only when used by properly trained individuals. Unless otherwise stated in the Documentation, this warranty is limited to one year from date of shipment when the Product is subjected to normal, proper and intended usage. This warranty does not extend to anyone other than the Buyer. Any model or sample furnished to Buyer is merely illustrative of the general type and quality of goods and does not represent that any Product will conform to such model or sample. NO OTHER WARRANTIES, EXPRESS OR IMPLIED, ARE GRANTED INCLUDING WITHOUT LIMITATION, IMPLIED WARRANTIES OF MERCHANTABILITY, FITNESS FOR ANY PARTICULAR PURPOSE, OR NON INFRINGEMENT. BUYER'S EXCLUSIVE REMEDY FOR NON-CONFORMING PRODUCTS DURING THE WARRANTY PERIOD IS LIMITED TO REPAIR, REPLACEMENT OF OR REFUND FOR THE NON-CONFORMING PRODUCT(S) AT SELLER'S SOLE OPTION. THERE IS NO OBLIGATION TO REPAIR, REPLACE OR REFUND FOR PRODUCTS AS THE RESULT OF (I) ACCIDENT, DISASTER OR EVENT OF FORCE MAJEURE, (II) MISUSE, FAULT OR NEGLIGENCE OF OR BY BUYER, (III) USE OF THE PRODUCTS IN A MANNER FOR WHICH THEY WERE NOT DESIGNED, OR (IV) IMPROPER STORAGE AND HANDLING OF THE PRODUCTS. Unless otherwise expressly stated on the Product or in the documentation accompanying the Product, the Product is intended for research only and is not to be used for any other purpose, including without limitation, unauthorized commercial uses, in vitro diagnostic uses, ex vivo or in vivo therapeutic uses, or any type of consumption by or application to human or animals.