

# IFN gamma Monoclonal Antibody (4S.B3), eFluor™ 506, eBioscience™

Product Details	
Size	100 Tests
Species Reactivity	Human
Published Species	Mouse
Host/Isotype	Mouse / IgG1, kappa
Recommended Isotype Control	Mouse IgG1 kappa Isotype Control (P3.6.2.8.1), eFluor™ 506, eBioscience™
Class	Monoclonal
Type	Antibody
Clone	4S.B3
Conjugate	eFluor™ 506
Excitation/Emission Max	419/508 nm
Form	Liquid
Concentration	5 µL/Test
Purification	Affinity chromatography
Storage buffer	PBS, pH 7.2, with 0.2% BSA
Contains	0.09% sodium azide
Storage conditions	4° C, store in dark, DO NOT FREEZE!
RRID	AB_2637157

Applications	Tested Dilution	Publications
Immunohistochemistry (IHC)	-	1 Publication
Flow Cytometry (Flow)	5 µL (0.06 µg)/test	59 Publications
ELISA (ELISA)	-	1 Publication

## Product Specific Information

**Description:** The 4S.B3 monoclonal antibody reacts with interferon-gamma (IFN gamma). Human IFN gamma is a 17 kDa factor produced by activated T and NK cells and is an anti-viral and anti-parasitic cytokine. IFN gamma in synergy with other cytokines, such as TNF alpha, inhibits proliferation of normal and transformed cells. Immunomodulatory effects of IFN gamma are exerted on a wide range of cell types expressing the high affinity receptors for IFN gamma. Glycosylation of IFN gamma does not affect its biological activity.

**Applications Reported:** This 4S.B3 antibody has been reported for use in intracellular staining followed by flow cytometric analysis.

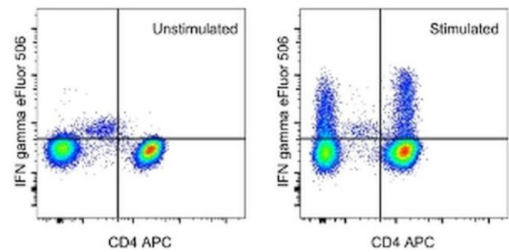
**Applications Tested:** This 4S.B3 antibody has been pre-titrated and tested by intracellular staining and flow cytometric analysis of stimulated normal human peripheral blood cells using the Intracellular Fixation & Permeabilization Buffer Set (cat. 88-8824) and protocol. Please refer to Best Protocols: Protocol A: Two step protocol for (cytoplasmic) intracellular proteins located under the Resources Tab online. This can be used at 5 µL (0.06 µg) per test. A test is defined as the amount (µg) of antibody that will stain a cell sample in a final volume of 100 µL. Cell number should be determined empirically but can range from 10<sup>5</sup> to 10<sup>8</sup> cells/test.

eFluor® 506 can be excited with the violet laser line (405 nm) and emits at 506 nm. We recommend using a 510/20 band pass filter, or equivalent. Please make sure that your instrument is capable of detecting this fluorochrome.

Excitation: 405 nm; Emission: 506 nm; Laser: Violet Laser.

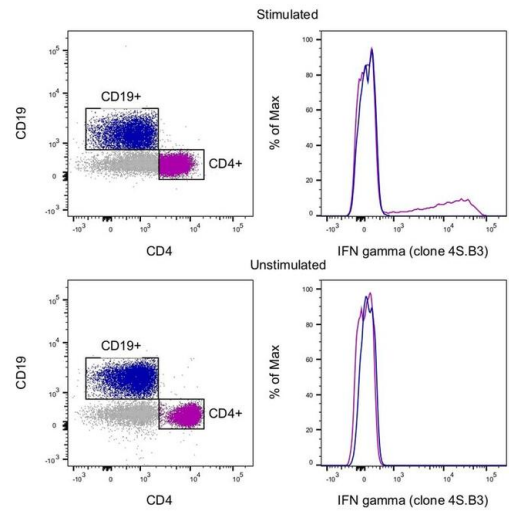
Filtration: 0.2 µm post-manufacturing filtered.

Product Images For IFN gamma Monoclonal Antibody (4S.B3), eFluor™ 506, eBioscience™



IFN gamma Antibody (69-7319-42) in Flow

Normal human peripheral blood cells were unstimulated (left) or stimulated with Cell Stimulation Cocktail (plus protein transport inhibitors) (500X) (Product # 00-4975-03) (right). Cells were fixed and stained intracellularly with Anti-Human CD4 APC (Product # 17-0047-42) and Anti-Human IFN gamma eFluor® 506, using the Intracellular Fixation & Permeabilization Buffer Set (Product # 88-8824-00) and protocol. Cells in the lymphocyte gate were used for analysis.



IFN gamma Antibody (69-7319-42)

Intracellular staining of stimulated human peripheral blood cells. As expected based on known expression patterns, IFN gamma clone 4S.B3 stains a subset of CD4+ T cells only after stimulation and does not stain CD19+ B cells regardless of stimulation. Details: Normal human peripheral blood cells were cultured in the presence of Protein Transport Inhibitors (500X) (Unstimulated, bottom row) or Cell Stimulation Cocktail (plus protein transport inhibitors, 500X) for 5 hours (Stimulated, top row). Cells were fixed and permeabilized with the IC Fixation & Permeabilization Buffer Set and protocol followed by intracellular staining with CD19 (clone SJ25C1), CD4 (clone RPA-T4), and IFN gamma (clone 4S.B3). Cells in the CD19+ (blue histogram) or CD4+ (purple histogram) gates were used for analysis. {TM}

View more figures on [thermofisher.com](https://thermofisher.com)

## Immunohistochemistry (1)

Journal of translational medicine	Year 2021
<b>Niraparib exhibits a synergistic anti-tumor effect with PD-L1 blockade by inducing an immune response in ovarian cancer.</b>	
"Published figure using IFN gamma monoclonal antibody (Product # 69-7319-42) in Flow Cytometry"	
Authors: Meng J,Peng J,Feng J,Maurer J,Li X,Li Y,Yao S,Chu R,Pan X,Li J,Zhang T,Liu L,Zhang Q,Yuan Z,Bu H,Song K,Kong B	

## Flow Cytometry (59)

Cell & bioscience	Year 2023
<b>GPR116 receptor regulates the antitumor function of NK cells via Gq/HIF1/NF-B signaling pathway as a potential immune checkpoint.</b>	
"Published figure using IFN gamma monoclonal antibody (Product # 69-7319-42) in Flow Cytometry"	
Authors: Guo D,Jin C,Gao Y,Lin H,Zhang L,Zhou Y,Yao J,Duan Y,Ren Y,Hui X,Ge Y,Yang R,Jiang W	

Cancer immunology research	Year 2023
<b>CD8+ T cell-Dependent Remodeling of the Tumor Microenvironment Overcomes Chemoresistance.</b>	
"Published figure using IFN gamma monoclonal antibody (Product # 69-7319-42) in Flow Cytometry"	
Authors: Lao L,Zeng W,Huang P,Chen H,Jia Z,Wang P,Huang D,Chen J,Nie Y,Yang L,Wu W,Liu J	

[View more Flow references on thermofisher.com](#)

## ELISA (1)

Frontiers in immunology	Year 2021
<b>A Method of Assessment of Human Natural Killer Cell Phenotype and Function in Whole Blood.</b>	
"Published figure using IFN gamma monoclonal antibody (Product # 69-7319-42) in Flow Cytometry"	
Authors: Market M,Tennakoon G,Ng J,Scaffidi M,de Souza CT,Kennedy MA,Auer RC	

## More applications with references on thermofisher.com

For Research Use Only. Not for use in diagnostic procedures. Not for resale without express authorization. Products are warranted to operate or perform substantially in conformance with published Product specifications in effect at the time of sale, as set forth in the Production documentation, specifications and/or accompanying package inserts ("Documentation"). No claim of suitability for use in applications regulated by FDA is made. The warranty provided herein is valid only when used by properly trained individuals. Unless otherwise stated in the Documentation, this warranty is limited to one year from date of shipment when the Product is subjected to normal, proper and intended usage. This warranty does not extend to anyone other than the Buyer. Any model or sample furnished to Buyer is merely illustrative of the general type and quality of goods and does not represent that any Product will conform to such model or sample. NO OTHER WARRANTIES, EXPRESS OR IMPLIED, ARE GRANTED INCLUDING WITHOUT LIMITATION, IMPLIED WARRANTIES OF MERCHANTABILITY, FITNESS FOR ANY PARTICULAR PURPOSE, OR NON-INFRINGEMENT. BUYER'S EXCLUSIVE REMEDY FOR NON-CONFORMING PRODUCTS DURING THE WARRANTY PERIOD IS LIMITED TO REPAIR, REPLACEMENT OF OR REFUND FOR THE NON-CONFORMING PRODUCT(S) AT SELLER'S SOLE OPTION. THERE IS NO OBLIGATION TO REPAIR, REPLACE OR REFUND FOR PRODUCTS AS THE RESULT OF (i) ACCIDENT, DISASTER OR EVENT OF FORCE MAJEURE, (ii) MISUSE, FAULT OR NEGLIGENCE OF OR BY BUYER, (iii) USE OF THE PRODUCTS IN A MANNER FOR WHICH THEY WERE NOT DESIGNED, OR (iv) IMPROPER STORAGE AND HANDLING OF THE PRODUCTS. Unless otherwise expressly stated on the Product or in the documentation accompanying the Product, the Product is intended for research only and is not to be used for any other purpose, including without limitation, unauthorized commercial uses, in vitro diagnostic uses, ex vivo or in vivo therapeutic uses, or any type of consumption by or application to human or animals.