

Phospho-p70 S6 Kinase (Thr421, Ser424) Recombinant Rabbit Monoclonal Antibody (B12H16L8)

Product Details	
Size	100 µg
Species Reactivity	Human, Rat
Host/Isotype	Rabbit / IgG
Class	Recombinant Monoclonal
Type	Antibody
Clone	B12H16L8
Conjugate	Unconjugated
Immunogen	Phosphopeptide corresponding to amino acids 417-428 of human p70 ribosomal protein S6 kinase
Form	Liquid
Concentration	0.5 mg/mL
Purification	Protein A
Storage buffer	PBS
Contains	0.09% sodium azide
Storage Conditions	Store at 4°C short term. For long term storage, store at -20°C, avoiding freeze/thaw cycles.
RRID	AB_2532378

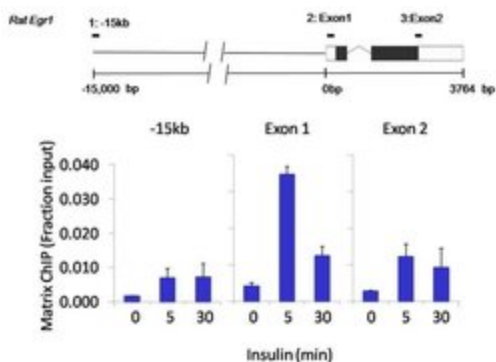
Applications	Tested Dilution	Publications
Western Blot (WB)	1:500-1:5000	-
ChIP assay (ChIP)	1 µL	-

Product Specific Information

Intact IgG appears on a non-reducing gel as ~150 kDa band and upon reduction generating a ~25 kDa light chain band and a ~50 kDa heavy chain.

Recombinant rabbit monoclonal antibodies are produced using in vitro expression systems. The expression systems are developed by cloning in the specific antibody DNA sequences from immunoreactive rabbits. Then, individual clones are screened to select the best candidates for production. The advantages of using recombinant rabbit monoclonal antibodies include: better specificity and sensitivity, lot-to-lot consistency, animal origin-free formulations, and broader immunoreactivity to diverse targets due to larger rabbit immune repertoire.

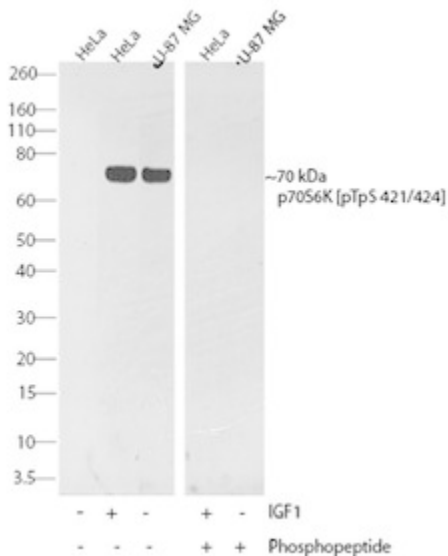
Advanced Verification Data



Phospho-p70 S6 Kinase (Thr421, Ser424) Antibody (701083)

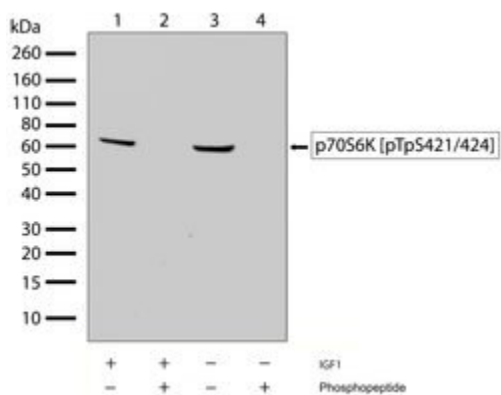
Antibody specificity was demonstrated through detection of enrichment of the target protein at specific gene loci. Chromatin Immunoprecipitation (ChIP) was performed using anti-p70 S6 Kinase (pTpS421/424) rabbit monoclonal antibody (Product # 701083), by treating exon1 and exon2 of ratEGR1 (a relevant positive target gene /binding site) with Insulin at different time points. Cell treatment validation info.

Product Images For Phospho-p70 S6 Kinase (Thr421, Ser424) Recombinant Rabbit Monoclonal Antibody (B12H16L8)



Phospho-p70 S6 Kinase (Thr421, Ser424) Antibody (701083) in WB

Western blot analysis of p70S6K (pTpS421/424) was performed by loading 30 µg of untreated HeLa cells (lane 1), HeLa cells treated with IGF1 (150 ng/mL for 15 minutes) (lane 2) and U-87 MG lysates (lane 3) using Novex®NuPAGE®4-12% Bis-Tris gel (Product # NP0321BOX), Xcell SureLock Electrophoresis system (Product # EI0002), Novex sharp Pre-stained Protein Standard (Product # LC5800). Proteins were transferred to a PVDF membrane and blocked with 5% skim milk for 1 hour at room temperature. p70S6K (pTpS421/424) was detected at ~70 kDa using p70S6K (pTpS421/424) Recombinant Rabbit Monoclonal Antibody (Product # 701083) at a 1:1000 dilution in 2.5% skim milk at 4° C overnight on a rocking platform. To confirm specificity, competition was performed with the phosphopeptide (10 µg/mL) (as shown in the corresponding blot on the right). Detection was performed using an HRP-conjugated Goat anti-Rabbit secondary antibody (Product # G-21234) at a 1:5000 dilution and chemiluminescent detection was performed using Pierce™ ECL Western blotting Substrate (Product # 32106).



Phospho-p70 S6 Kinase (Thr421, Ser424) Antibody (701083) in WB

Western blot analysis of Phospho-p70S6K Thr421/Ser424 in whole cell extracts of serum-starved HeLa cells treated with IGF1 (150 ng/mL, 15 min) (lanes 1 and 2), and U87-MG cells (lanes 3 and 4) using a Phospho-p70S6K Thr421/Ser424 recombinant rabbit monoclonal antibody (Product # 701083) at a dilution of 1 µg/mL. To confirm specificity, competition was performed by preincubation with the phosphopeptide to inhibit antibody binding (lanes 2 and 4). Samples were detected using chemiluminescence (ECL). Results show a band at ~70 kDa.

View more figures on thermofisher.com

For Research Use Only. Not for use in diagnostic procedures. Not for resale without express authorization. Products are warranted to operate or perform substantially in conformance with published Product specifications in effect at the time of sale, as set forth in the Production documentation, specifications and/or accompanying package inserts ("Documentation"). No claim of suitability for use in applications regulated by FDA is made. The warranty provided herein is valid only when used by properly trained individuals. Unless otherwise stated in the Documentation, this warranty is limited to one year from date of shipment when the Product is subjected to normal, proper and intended usage. This warranty does not extend to anyone other than the Buyer. Any model or sample furnished to Buyer is merely illustrative of the general type and quality of goods and does not represent that any Product will conform to such model or sample. NO OTHER WARRANTIES, EXPRESS OR IMPLIED, ARE GRANTED INCLUDING WITHOUT LIMITATION, IMPLIED WARRANTIES OF MERCHANTABILITY, FITNESS FOR ANY PARTICULAR PURPOSE, OR NON INFRINGEMENT. BUYER'S EXCLUSIVE REMEDY FOR NON-CONFORMING PRODUCTS DURING THE WARRANTY PERIOD IS LIMITED TO REPAIR, REPLACEMENT OF OR REFUND FOR THE NON-CONFORMING PRODUCT(S) AT SELLER'S SOLE OPTION. THERE IS NO OBLIGATION TO REPAIR, REPLACE OR REFUND FOR PRODUCTS AS THE RESULT OF (I) ACCIDENT, DISASTER OR EVENT OF FORCE MAJEURE, (II) MISUSE, FAULT OR NEGLIGENCE OF OR BY BUYER, (III) USE OF THE PRODUCTS IN A MANNER FOR WHICH THEY WERE NOT DESIGNED, OR (IV) IMPROPER STORAGE AND HANDLING OF THE PRODUCTS. Unless otherwise expressly stated on the Product or in the documentation accompanying the Product, the Product is intended for research only and is not to be used for any other purpose, including without limitation, unauthorized commercial uses, in vitro diagnostic uses, ex vivo or in vivo therapeutic uses, or any type of consumption by or application to human or animals.