

alpha Synuclein Recombinant Rabbit Monoclonal Antibody (14H2L1)

Product Details	
Size	100 µg
Species Reactivity	Human
Published Species	Rat, Human, Mouse
Host/Isotype	Rabbit / IgG
Expression system	Expi293
Class	Recombinant Monoclonal
Type	Antibody
Clone	14H2L1
Conjugate	Unconjugated
Immunogen	Peptide corresponding to amino acids 117-125 of human synuclein, alpha
Form	Liquid
Concentration	0.5 mg/mL
Purification	Protein A
Storage buffer	PBS
Contains	0.09% sodium azide
Storage conditions	Store at 4°C short term. For long term storage, store at -20°C, avoiding freeze/thaw cycles.
RRID	AB_2532379

Applications	Tested Dilution	Publications
Western Blot (WB)	1:500-1:5,000	7 Publications
Immunohistochemistry (IHC)	-	3 Publications
Immunohistochemistry (Paraffin) (IHC (P))	1:100-1:1,000	-
Immunocytochemistry (ICC/IF)	1:500-1:5,000	1 Publication

Product Specific Information

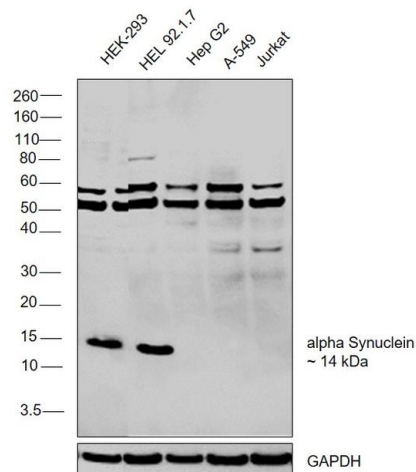
Intact IgG appears on a non-reducing gel as ~150 kDa band and upon reduction generating a ~25 kDa light chain band and a ~50 kDa heavy chain.

Recombinant rabbit monoclonal antibodies are produced using in vitro expression systems. The expression systems are developed by cloning in the specific antibody DNA sequences from immunoreactive rabbits. Then, individual clones are screened to select the best candidates for production. The advantages of using recombinant rabbit monoclonal antibodies include: better specificity and sensitivity, lot-to-lot consistency, animal origin-free formulations, and broader immunoreactivity to diverse targets due to larger rabbit immune repertoire.

Product Images For alpha Synuclein Recombinant Rabbit Monoclonal Antibody (14H2L1)

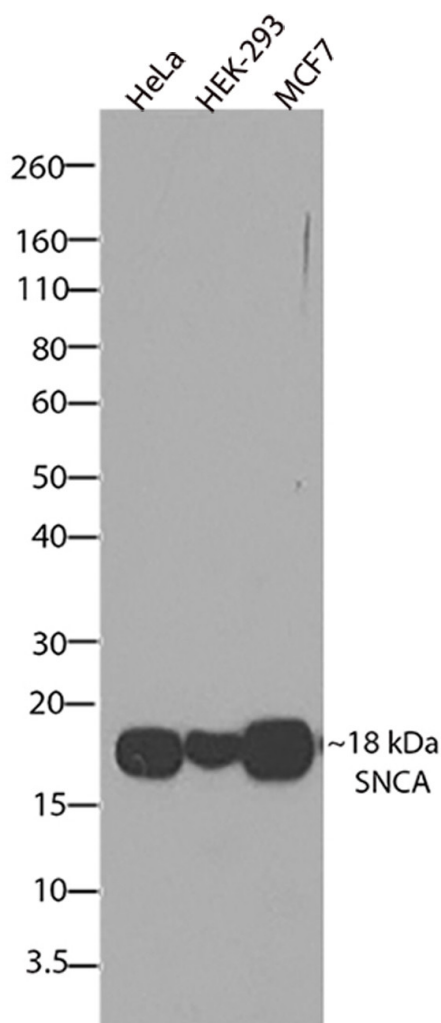
alpha Synuclein Antibody (701085) in WB

Western blot was performed using Anti-alpha Synuclein Recombinant Rabbit Monoclonal Antibody (14H2L1) (Product # 701085) and a 14 kDa band corresponding to alpha Synuclein was observed across the cell lines tested. Membrane enriched extracts (30 µg lysate) of HEK-293 (Lane 1), HEL 92.1.7 (Lane 2), Hep G2 (Lane 3), A-549 (Lane 4), Jurkat (Lane 5) were electrophoresed using NuPAGE™ 4-12% Bis-Tris Protein Gel (Product # NP0321BOX). Resolved proteins were then transferred onto a Nitrocellulose membrane (Product # IB23001) by iBlot® 2 Dry Blotting System (Product # IB21001). The blot was probed with the primary antibody (1:1000 dilution) and detected by chemiluminescence with Goat anti-Rabbit IgG (Heavy Chain) Superclonal™ Recombinant Secondary Antibody, HRP (Product # A27036, 1:10000 dilution) using the iBright FL 1000 (Product # A32752). Chemiluminescent detection was performed using Novex® ECL Chemiluminescent Substrate Reagent Kit (Product # WP20005).



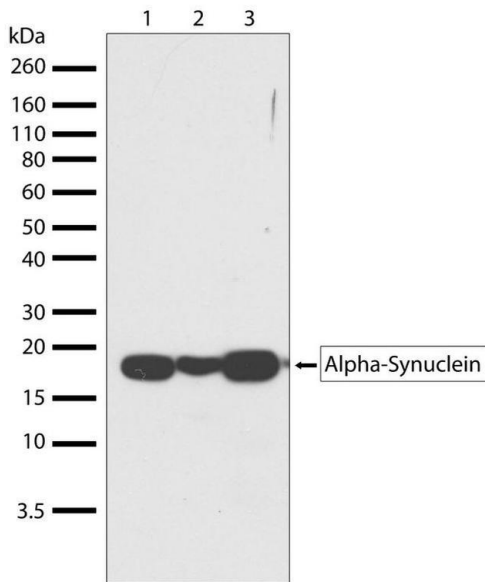
alpha Synuclein Antibody (701085) in WB

Western blot analysis of SNCA was performed by loading 30 µg of HeLa, HEK-293 and MCF-7 cell lysates using Novex®NuPAGE®4-12% Bis-Tris gel (Product # NP0321BOX), XCell SureLock Electrophoresis System (Product # EI0002), Novex® Sharp Pre-Stained Protein Standard (Product # LC5800), and iBlot® Dry Blotting System (Product # IB21001). Proteins were transferred to a nitrocellulose membrane and blocked with 5% skim milk for 1 hour at room temperature. SNCA was detected at ~18 kDa using SNCA Recombinant Rabbit Monoclonal Antibody (Product # 701085) at a 1:1000 dilution in 2.5% skim milk at 4°C overnight on a rocking platform. Detection was performed using an HRP-conjugated Goat anti-Rabbit secondary antibody (Product # G-21234) at a 1:5000 dilution and chemiluminescent detection was performed using Pierce™ ECL Western blotting Substrate (Product # 32106).



alpha Synuclein Antibody (701085) in WB

Western blot analysis of alpha Synuclein in whole cell extracts of HeLa (lane 1), HEK293 (lane 2), and MCF-7 (lane 3) using an Alpha Synuclein recombinant rabbit monoclonal antibody (Product # 701085) at a dilution of 1 µg/mL. Samples were detected using chemiluminescence (ECL). Results show a band at ~18kDa.



[View more figures on thermofisher.com](https://www.thermofisher.com)

Western Blot (7)

Frontiers in neurology	Year 2022
Exposure of -Synuclein Aggregates to Organotypic Slice Cultures Recapitulates Key Molecular Features of Parkinson's Disease.	Species Rat
"701085 was used in Immunohistochemistry, Western Blot to describe a simple and reliable method for the preparation of organotypic hippocampal slice cultures to investigate how the addition of -synuclein in levels that do not cause acute toxicity impact cell viability over long periods of time, enabling the study of the cumulative effects of -synuclein in a complex environment."	Dilution 1:10000
Authors: Moudio S,Rodin F,Albargothy NJ,Karlsson U,Reyes JF,Hallbeck M	
Disease models & mechanisms	Year 2021
Development of a physiologically relevant and easily scalable LUHMES cell-based model of G2019S LRRK2-driven Parkinson's disease.	
"Published figure using alpha Synuclein recombinant monoclonal antibody (Product # 701085) in Western Blot"	
Authors: Calamini B,Geyer N,Huss-Braun N,Bernhardt A,Harsany V,Rival P,Cindhuchao M,Hoffmann D,Gratzer S	

[View more WB references on thermofisher.com](#)

Immunohistochemistry (3)

Frontiers in neurology	Year 2022
Exposure of -Synuclein Aggregates to Organotypic Slice Cultures Recapitulates Key Molecular Features of Parkinson's Disease.	Species Rat
"701085 was used in Immunohistochemistry, Western Blot to describe a simple and reliable method for the preparation of organotypic hippocampal slice cultures to investigate how the addition of -synuclein in levels that do not cause acute toxicity impact cell viability over long periods of time, enabling the study of the cumulative effects of -synuclein in a complex environment."	Dilution 1:10000
Authors: Moudio S,Rodin F,Albargothy NJ,Karlsson U,Reyes JF,Hallbeck M	
Acta neuropathologica communications	Year 2019
DNA repair deficiency and senescence in concussed professional athletes involved in contact sports.	Species Human
"701085 was used in Immunohistochemistry to assess clinical presentation, neuropathological changes, load of DNA damage, morphological markers of cellular senescence, and expression of genes involved in DNA damage signaling, DNA repair, and cellular senescence including the senescence-associated secretory phenotype (SASP) in 38 professional athletes."	Dilution 1:500
Authors: Schwab N,Grenier K,Hazrati LN	

[View more IHC references on thermofisher.com](#)

More applications with references on thermofisher.com

ICC/IF (1)

For Research Use Only. Not for use in diagnostic procedures. Not for resale without express authorization. Products are warranted to operate or perform substantially in conformance with published Product specifications in effect at the time of sale, as set forth in the Production documentation, specifications and/or accompanying package inserts ("Documentation"). No claim of suitability for use in applications regulated by FDA is made. The warranty provided herein is valid only when used by properly trained individuals. Unless otherwise stated in the Documentation, this warranty is limited to one year from date of shipment when the Product is subjected to normal, proper and intended usage. This warranty does not extend to anyone other than the Buyer. Any model or sample furnished to Buyer is merely illustrative of the general type and quality of goods and does not represent that any Product will conform to such model or sample. NO OTHER WARRANTIES, EXPRESS OR IMPLIED, ARE GRANTED INCLUDING WITHOUT LIMITATION, IMPLIED WARRANTIES OF MERCHANTABILITY, FITNESS FOR ANY PARTICULAR PURPOSE, OR NON INFRINGEMENT. BUYER'S EXCLUSIVE REMEDY FOR NON-CONFORMING PRODUCTS DURING THE WARRANTY PERIOD IS LIMITED TO REPAIR, REPLACEMENT OF OR REFUND FOR THE NON-CONFORMING PRODUCT(S) AT SELLER'S SOLE OPTION. THERE IS NO OBLIGATION TO REPAIR, REPLACE OR REFUND FOR PRODUCTS AS THE RESULT OF (I) ACCIDENT, DISASTER OR EVENT OF FORCE MAJEURE, (II) MISUSE, FAULT OR NEGLIGENCE OF OR BY BUYER, (III) USE OF THE PRODUCTS IN A MANNER FOR WHICH THEY WERE NOT DESIGNED, OR (IV) IMPROPER STORAGE AND HANDLING OF THE PRODUCTS. Unless otherwise expressly stated on the Product or in the documentation accompanying the Product, the Product is intended for research only and is not to be used for any other purpose, including without limitation, unauthorized commercial uses, in vitro diagnostic uses, ex vivo or in vivo therapeutic uses, or any type of consumption by or application to human or animals.