

E-cadherin Recombinant Rabbit Monoclonal Antibody (5H6L18)

Product Details	
Size	100 µg
Species Reactivity	Human
Published Species	Fish, Human
Host/Isotype	Rabbit / IgG
Class	Recombinant Monoclonal
Type	Antibody
Clone	5H6L18
Conjugate	Unconjugated
Immunogen	Peptide corresponding to amino acids 668-77 of human E-cadherin (epithelial)
Form	Liquid
Concentration	0.5 mg/mL
Purification	Protein A
Storage buffer	PBS
Contains	0.09% sodium azide
Storage conditions	Store at 4°C short term. For long term storage, store at -20°C, avoiding freeze/thaw cycles.
RRID	AB_2532405

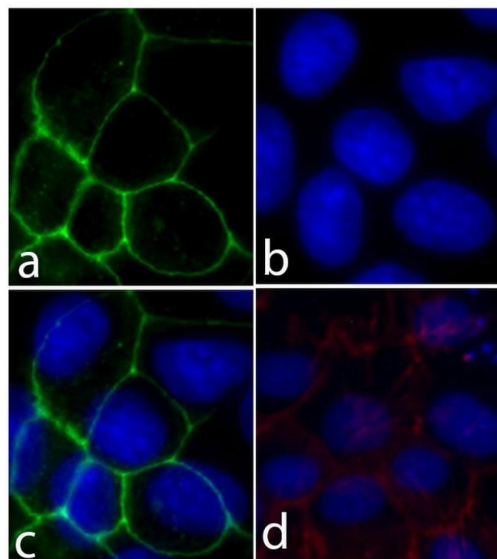
Applications	Tested Dilution	Publications
Western Blot (WB)	1:500-1:5,000	6 Publications
Immunocytochemistry (ICC/IF)	1:100-1:1,000	1 Publication

Product Specific Information

Intact IgG appears on a non-reducing gel as ~150 kDa band and upon reduction generating a ~25 kDa light chain band and a ~50 kDa heavy chain.

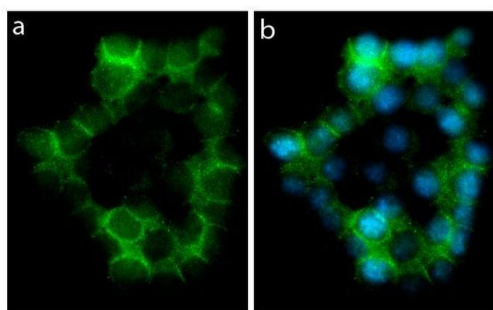
Recombinant rabbit monoclonal antibodies are produced using in vitro expression systems. The expression systems are developed by cloning in the specific antibody DNA sequences from immunoreactive rabbits. Then, individual clones are screened to select the best candidates for production. The advantages of using recombinant rabbit monoclonal antibodies include: better specificity and sensitivity, lot-to-lot consistency, animal origin-free formulations, and broader immunoreactivity to diverse targets due to larger rabbit immune repertoire.

Product Images For E-cadherin Recombinant Rabbit Monoclonal Antibody (5H6L18)



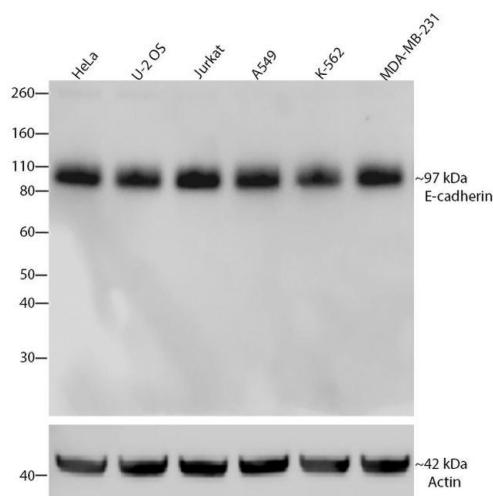
E-cadherin Antibody (701134) in ICC/IF

Immunofluorescent analysis of E-cadherin/CD324 was performed on 90% confluent log phase Caco-2 cells. The cells were fixed with 4% paraformaldehyde for 15 minutes, and blocked with 5% BSA for 1 hour at room temperature. The cells were labeled with E-cadherin/CD324 Recombinant Rabbit Monoclonal Antibody (Product # 701134) at a dilution of 1:500 in 1% BSA and incubated for 3 hours at room temperature and then labeled with Alexa Fluor® 488 Goat anti-Rabbit IgG secondary antibody (Product # A-11008) at a dilution of 1:400 for 30 minutes at room temperature (Panel a: green). Nuclei (Panel b: blue) were stained with SlowFade® Gold Antifade Mountant with DAPI (Product # S36938). Panel c is a merged image showing cell junction localization and panel d is a control without primary antibody. The images were captured using a Nikon microscope at 20X magnification.



E-cadherin Antibody (701134) in ICC/IF

Immunofluorescent analysis of E-cadherin in HEK293 cells using an E-cadherin recombinant rabbit monoclonal antibody (Product # 701134) followed by detection using an Alexa Fluor 488-conjugated goat anti-rabbit secondary antibody (green) and nuclei staining using DAPI (Image A). Image B is a composite image showing localization of E-cadherin at cell membrane and junction.



E-cadherin Antibody (701134) in WB

Western blot analysis of E-cadherin/CD324 was performed by loading 30 µg of HeLa, U-2 OS, Jurkat, A549, K562 and MDA-MB-231 cell lysates using Novex® NuPAGE® 4-12% Bis-Tris Gel (Product # NP0321BOX), XCell SureLock Electrophoresis System (Product # EI0002), and Novex® Sharp Pre-Stained Protein Standard (Product # LC5800). Proteins were transferred to a PVDF membrane and blocked with 5% skim milk for 1 hour at room temperature. E-cadherin/CD324 was detected at ~97 kDa using E-cadherin/CD324 Recombinant Rabbit Monoclonal Antibody (Product # 701134) at a 1:1000 dilution in 2.5% skim milk at 4°C overnight on a rocking platform. Detection was performed using an HRP-conjugated Goat anti-Rabbit secondary antibody (Product # G-21234) at a 1:5000 dilution and chemiluminescent detection was performed using Pierce™ ECL Western blotting Substrate (Product # 32106).

View more figures on [thermofisher.com](https://www.thermofisher.com)

Western Blot (6)

Cell adhesion & migration

Atypical PKCs activate Vimentin to facilitate prostate cancer cell motility and invasion.

"701134 was used in Western Blotting to understand the interaction of atypical protein kinase C with Vimentin and their role in metastasis of prostate cancer cells."

Authors: Ratnayake WS, Apostolatos CA, Breedy S, Dennison CL, Hill R, Acevedo-Duncan M

Species
Human
Not Applicable

Dilution
Not Cited
Not Cited

Year
2021

Frontiers in immunology

Rainbow Trout (*Oncorhynchus Mykiss*) Intestinal Epithelial Cells as a Model for Studying Gut Immune Function and Effects of Functional Feed Ingredients.

"701134 was used in Western Blotting to evaluate the effects of lipopolysaccharide and three functional feed ingredients in rainbow trout intestinal epithelial cell line cells grown on conventional culture plates and transwell membranes."

Authors: Wang J, Lei P, Gamil AAA, Lagos L, Yue Y, Schirmer K, Mydland LT, Øverland M, Krogdahl Å, Kortner TM

Species
Fish

Dilution
Not Cited

Year
2020

[View more WB references on thermofisher.com](#)

Immunocytochemistry (1)

Oncology letters

Cisplatin promotes mesenchymal-like characteristics in osteosarcoma through Snail.

"701134 was used in immunocytochemistry to test if chemotherapy affects the epithelial-mesenchymal transition of osteosarcoma cells"

Authors: Fang S, Yu L, Mei H, Yang J, Gao T, Cheng A, Guo W, Xia K, Liu G

Species
Human

Dilution
1:100

Year
2016

More applications with references on thermofisher.com

For Research Use Only. Not for use in diagnostic procedures. Not for resale without express authorization. Products are warranted to operate or perform substantially in conformance with published Product specifications in effect at the time of sale, as set forth in the Production documentation, specifications and/or accompanying package inserts ("Documentation"). No claim of suitability for use in applications regulated by FDA is made. The warranty provided herein is valid only when used by properly trained individuals. Unless otherwise stated in the Documentation, this warranty is limited to one year from date of shipment when the Product is subjected to normal, proper and intended usage. This warranty does not extend to anyone other than the Buyer. Any model or sample furnished to Buyer is merely illustrative of the general type and quality of goods and does not represent that any Product will conform to such model or sample. NO OTHER WARRANTIES, EXPRESS OR IMPLIED, ARE GRANTED INCLUDING WITHOUT LIMITATION, IMPLIED WARRANTIES OF MERCHANTABILITY, FITNESS FOR ANY PARTICULAR PURPOSE, OR NON INFRINGEMENT. BUYER'S EXCLUSIVE REMEDY FOR NON-CONFORMING PRODUCTS DURING THE WARRANTY PERIOD IS LIMITED TO REPAIR, REPLACEMENT OF OR REFUND FOR THE NON-CONFORMING PRODUCT(S) AT SELLER'S SOLE OPTION. THERE IS NO OBLIGATION TO REPAIR, REPLACE OR REFUND FOR PRODUCTS AS THE RESULT OF (I) ACCIDENT, DISASTER OR EVENT OF FORCE MAJEURE, (II) MISUSE, FAULT OR NEGLIGENCE OF OR BY BUYER, (III) USE OF THE PRODUCTS IN A MANNER FOR WHICH THEY WERE NOT DESIGNED, OR (IV) IMPROPER STORAGE AND HANDLING OF THE PRODUCTS. Unless otherwise expressly stated on the Product or in the documentation accompanying the Product, the Product is intended for research only and is not to be used for any other purpose, including without limitation, unauthorized commercial uses, in vitro diagnostic uses, ex vivo or in vivo therapeutic uses, or any type of consumption by or application to human or animals.