

# ACTH Recombinant Rabbit Monoclonal Antibody (9H5L7)

Product Details	
Size	100 µg
Species Reactivity	Human, Mouse, Rat
Published Species	Human
Host/Isotype	Rabbit / IgG
Expression system	Expi293
Class	Recombinant Monoclonal
Type	Antibody
Clone	9H5L7
Conjugate	Unconjugated
Immunogen	Peptide corresponding to amino acids 147-172 of human ACTH
Form	Liquid
Concentration	0.5 mg/mL
Purification	Protein A
Storage buffer	PBS
Contains	0.09% sodium azide
Storage conditions	Store at 4°C short term. For long term storage, store at -20°C, avoiding freeze/thaw cycles.
RRID	AB_2532462

Applications	Tested Dilution	Publications
Western Blot (WB)	1-3 µg/mL	-
Immunocytochemistry (ICC/IF)	2 µg/mL	1 Publication
ELISA (ELISA)	Assay-dependent	-

## Product Specific Information

This antibody is predicted to react with non-human primate, human, porcine and rabbit based on sequence homology.

Intact IgG appears on a non-reducing gel as ~150 kDa band and upon reduction generating a ~25 kDa light chain band and a ~50 kDa heavy chain.

Recombinant rabbit monoclonal antibodies are produced using in vitro expression systems. The expression systems are developed by cloning in the specific antibody DNA sequences from immunoreactive rabbits. Then, individual clones are screened to select the best candidates for production. The advantages of using recombinant rabbit monoclonal antibodies include: better specificity and sensitivity, lot-to-lot consistency, animal origin-free formulations, and broader immunoreactivity to diverse targets due to larger rabbit immune repertoire.

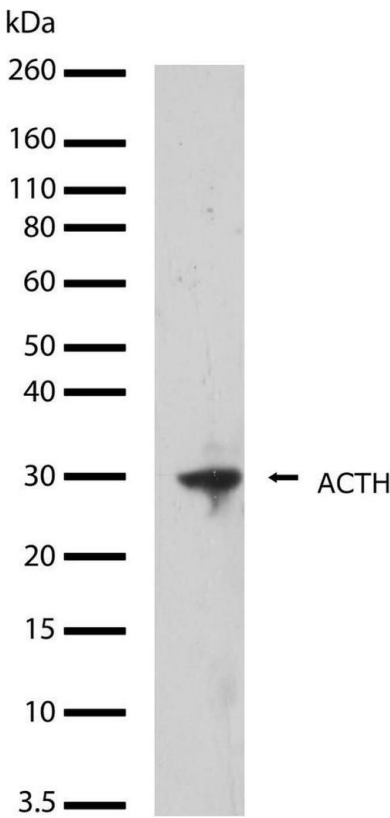
Product Images For ACTH Recombinant Rabbit Monoclonal Antibody (9H5L7)

ACTH Antibody (701293) in ICC/IF

Immunofluorescence analysis of Adrenocorticotrophic Hormone was performed using 70% confluent log phase U-87 MG cells. The cells were fixed with 4% paraformaldehyde for 10 minutes, permeabilized with 0.1% Triton™ X-100 for 10 minutes, and blocked with 1% BSA for 1 hour at room temperature. The cells were labeled with Adrenocorticotrophic Hormone (9H5L7) Recombinant Rabbit Monoclonal Antibody (Product # 701293) at 2 µg/mL in 0.1% BSA and incubated for 3 hours at room temperature and then labeled with Goat anti-Rabbit IgG (Heavy Chain) Superclonal™ Secondary Antibody, Alexa Fluor® 488 conj µgate (Product # A27034) at a dilution of 1:2000 for 45 minutes at room temperature (Panel a: green). Nuclei (Panel b: blue) were stained with SlowFade® Gold Antifade Mountant with DAPI (Product # S36938). F-actin (Panel c: red) was stained with Alexa Fluor® 555 Rhodamine Phalloidin (Product # R415, 1:300). Panel d represents the merged image showing cytoplasmic localization. Panel e shows the no primary antibody control. The images were captured at 60X magnification.

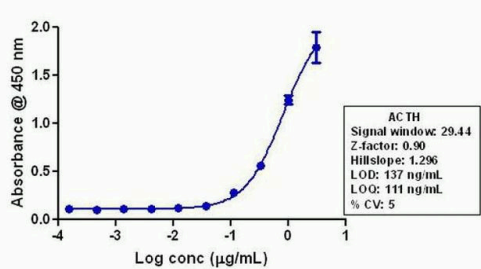
ACTH Antibody (701293) in WB

Western blot analysis of ACTH in whole tissue extracts from mouse brain using an ACTH recombinant rabbit monoclonal antibody (Product # 701293) at a dilution of 1 µg/mL. Samples were detected using chemiluminescence (ECL). Results show a band at ~29kDa.



ACTH Antibody (701293) in ELISA

Indirect ELISA analysis of ACTH in rat brain lysate coated onto the plate using an ACTH recombinant rabbit monoclonal antibody (Product # 701293) at various dilutions. A non-linear regression analysis was performed (4 PL) and LOD and LOQ for the antibody were determined.



View more figures on [thermofisher.com](https://thermofisher.com)

Immunocytochemistry (1)

<p>Journal of the Endocrine Society</p> <p><b>Immune Checkpoint Blockade Anti-PD-L1 as a Trigger for Autoimmune Polyendocrine Syndrome.</b></p> <p>"Published figure using ACTH recombinant monoclonal antibody (Product # 701293) in Immunocytochemistry"</p> <p>Authors: Lanzolla G,Coppelli A,Cosottini M,Del Prato S,Marcocci C,Lupi I</p>	<p><b>Year</b> 2019</p> <p><b>Species</b> Human</p> <p><b>Dilution</b> 1:50</p>
--	---

For Research Use Only. Not for use in diagnostic procedures. Not for resale without express authorization. Products are warranted to operate or perform substantially in conformance with published Product specifications in effect at the time of sale, as set forth in the Production documentation, specifications and/or accompanying package inserts ("Documentation"). No claim of suitability for use in applications regulated by FDA is made. The warranty provided herein is valid only when used by properly trained individuals. Unless otherwise stated in the Documentation, this warranty is limited to one year from date of shipment when the Product is subjected to normal, proper and intended usage. This warranty does not extend to anyone other than the Buyer. Any model or sample furnished to Buyer is merely illustrative of the general type and quality of goods and does not represent that any Product will conform to such model or sample. NO OTHER WARRANTIES, EXPRESS OR IMPLIED, ARE GRANTED INCLUDING WITHOUT LIMITATION, IMPLIED WARRANTIES OF MERCHANTABILITY, FITNESS FOR ANY PARTICULAR PURPOSE, OR NON-INFRINGEMENT. BUYER'S EXCLUSIVE REMEDY FOR NON-CONFORMING PRODUCTS DURING THE WARRANTY PERIOD IS LIMITED TO REPAIR, REPLACEMENT OF OR REFUND FOR THE NON-CONFORMING PRODUCT(S) AT SELLER'S SOLE OPTION. THERE IS NO OBLIGATION TO REPAIR, REPLACE OR REFUND FOR PRODUCTS AS THE RESULT OF (I) ACCIDENT, DISASTER OR EVENT OF FORCE MAJEURE, (II) MISUSE, FAULT OR NEGLIGENCE OF OR BY BUYER, (III) USE OF THE PRODUCTS IN A MANNER FOR WHICH THEY WERE NOT DESIGNED, OR (IV) IMPROPER STORAGE AND HANDLING OF THE PRODUCTS. Unless otherwise expressly stated on the Product or in the documentation accompanying the Product, the Product is intended for research only and is not to be used for any other purpose, including without limitation, unauthorized commercial uses, in vitro diagnostic uses, ex vivo or in vivo therapeutic uses, or any type of consumption by or application to human or animals.