

# Histone H3 Recombinant Rabbit Monoclonal Antibody (24HC2 LC12)

Product Details	
Size	20 µg
Species Reactivity	Human, Mouse, Rat
Published Species	Rat
Host/Isotype	Rabbit / IgG
Expression system	Expi293
Class	Recombinant Monoclonal
Type	Antibody
Clone	24HC2 LC12
Conjugate	Unconjugated
Immunogen	proprietary
Form	Liquid
Concentration	0.5 mg/mL
Purification	Protein A
Storage buffer	PBS
Contains	0.09% sodium azide
Storage conditions	Store at 4°C short term. For long term storage, store at -20°C, avoiding freeze/thaw cycles.
RRID	AB_2848509

Applications	Tested Dilution	Publications
Western Blot (WB)	1 µg/mL	1 Publication
Immunocytochemistry (ICC/IF)	2-4 µg	-
ELISA (ELISA)	Assay-Dependent	-
ChIP assay (ChIP)	1.5 µg/1x10 <sup>6</sup> cells	-

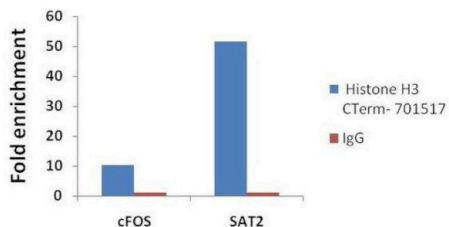
## Product Specific Information

This antibody is predicted to react with bovine, non-human primate, rat and ovine based on sequence homology.

Intact IgG appears on a non-reducing gel as ~150 kDa band and upon reduction generating a ~25 kDa light chain band and a ~50 kDa heavy chain.

Recombinant rabbit monoclonal antibodies are produced using in vitro expression systems. The expression systems are developed by cloning in the specific antibody DNA sequences from immunoreactive rabbits. Then, individual clones are screened to select the best candidates for production. The advantages of using recombinant rabbit monoclonal antibodies include: better specificity and sensitivity, lot-to-lot consistency, animal origin-free formulations, and broader immunoreactivity to diverse targets due to larger rabbit immune repertoire.

## Product Images For Histone H3 Recombinant Rabbit Monoclonal Antibody (24HC2 LC12)

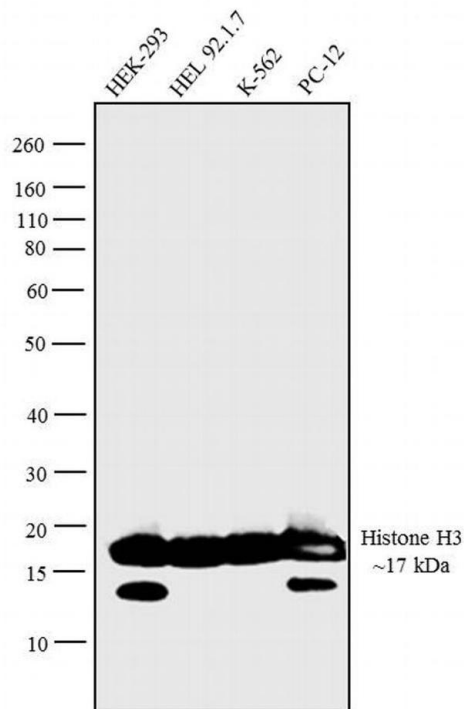


### Histone H3 Antibody (701517-20UG)

Antibody specificity was demonstrated through detection of enrichment of the target protein at specific gene loci. Chromatin Immunoprecipitation (ChIP) was performed using Anti-Histone H3 C-term Recombinant Rabbit Monoclonal Antibody (Product # 701517) with relevant positive and negative target genes/ binding sites. {RE}

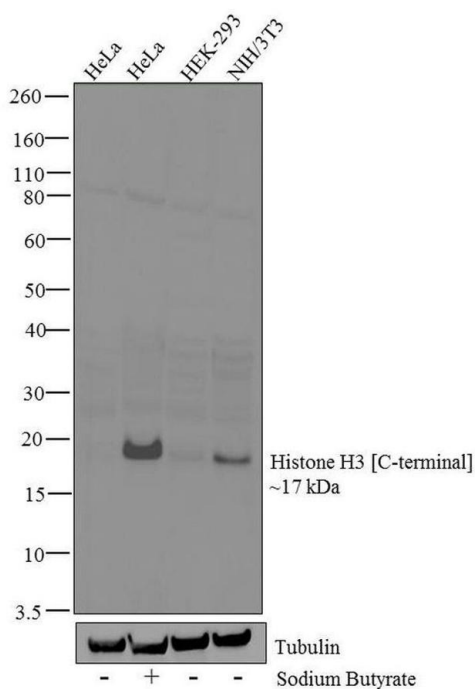
### Histone H3 Antibody (701517-20UG) in WB

Western blot analysis was performed on acid extracts of (20µg lysate) of HEK-293 (Lane 1), HEL 92.1.7 (Lane 2), K-562 (Lane 3) and PC-12 (Lane 4). The blot was probed with Rabbit Anti Histone H3 Monoclonal Antibody (Product # 701517, 1µg/mL) and detected by chemiluminescence using Goat anti-Rabbit IgG (Heavy Chain) Superclonal™ Secondary Antibody, HRP conjugate (Product # A27036, 0.25µg/mL, 1:4000 dilution). A 17 kDa band corresponding to Histone H3 was observed across the cell lines tested. Known quantity of protein samples were electrophoresed using Novex® NuPAGE® 4-12 % Bis-Tris gel (Product # NP0322BOX), XCell SureLock™ Electrophoresis System (Product # EI0002) and Novex® Sharp Pre-Stained Protein Standard (Product # LC5800). Resolved proteins were then transferred onto a nitrocellulose membrane with iBlot® 2 Dry Blotting System (Product # IB21001). The membrane was probed with the relevant primary and secondary Antibody following blocking with 5 % skimmed milk. Chemiluminescent detection was performed using Pierce™ ECL Western Blotting Substrate (Product # 32106).



### Histone H3 Antibody (701517-20UG) in WB

Western blot analysis of Histone H3 (C-terminal) was performed by loading 20 µg of HeLa (lane1), HeLa treated for 12 hr with 5 mM of Sodium Butyrate (lane2), HEK-293 (lane3) and NIH/3T3 (lane4) cell lysates using Novex®NuPAGE®4-12 % Bis-Tris gel (Product # NP0321BOX), XCell SureLock Electrophoresis System (Product # EI0002), Novex® Sharp Pre-Stained Protein Standard (Product # LC5800), and iBlot® Dry Blotting System (Product # IB21001). Proteins were transferred to a nitrocellulose membrane and blocked with 5 % skim milk for 1 hour at room temperature. Histone H3 (C-terminal) was detected at ~17 kDa using Histone H3 (C-term) Recombinant Rabbit Monoclonal Antibody (Product # 701517) at 0.5 µg-1 µg/mL in 2.5 % skim milk at 4°C overnight on a rocking platform. Goat anti-Rabbit IgG-HRP Secondary Antibody (Product # G-21234) at 1:5000 dilution was used and chemiluminescent detection was performed using Pierce™ ECL Western blotting Substrate (Product # 32106).



View more figures on [thermofisher.com](https://thermofisher.com)

1 Reference

Western Blot (1)

Frontiers in pharmacology	Year 2022
Improved Survival and Retinal Function of Aging ZDF Rats in Long-Term, Uncontrolled Diabetes by BGP-15 Treatment.	Species Rat
"701517 was used in Western Blot to examine its long-term tolerability or incidental side effects on obese-prone Zucker diabetic fatty (ZDF) rats to further increase the rationale for a future human translation."	
Authors: Wachal Z,Szilágyi A,Takács B,Szabó AM,Priksz D,Bombicz M,Szilvássy J,Juhász B,Szilvássy Z,Varga B	

For Research Use Only. Not for use in diagnostic procedures. Not for resale without express authorization. Products are warranted to operate or perform substantially in conformance with published Product specifications in effect at the time of sale, as set forth in the Production documentation, specifications and/or accompanying package inserts ("Documentation"). No claim of suitability for use in applications regulated by FDA is made. The warranty provided herein is valid only when used by properly trained individuals. Unless otherwise stated in the Documentation, this warranty is limited to one year from date of shipment when the Product is subjected to normal, proper and intended usage. This warranty does not extend to anyone other than the Buyer. Any model or sample furnished to Buyer is merely illustrative of the general type and quality of goods and does not represent that any Product will conform to such model or sample. NO OTHER WARRANTIES, EXPRESS OR IMPLIED, ARE GRANTED INCLUDING WITHOUT LIMITATION, IMPLIED WARRANTIES OF MERCHANTABILITY, FITNESS FOR ANY PARTICULAR PURPOSE, OR NON INFRINGEMENT. BUYER'S EXCLUSIVE REMEDY FOR NON-CONFORMING PRODUCTS DURING THE WARRANTY PERIOD IS LIMITED TO REPAIR, REPLACEMENT OF OR REFUND FOR THE NON-CONFORMING PRODUCT(S) AT SELLER'S SOLE OPTION. THERE IS NO OBLIGATION TO REPAIR, REPLACE OR REFUND FOR PRODUCTS AS THE RESULT OF (I) ACCIDENT, DISASTER OR EVENT OF FORCE MAJEURE, (II) MISUSE, FAULT OR NEGLIGENCE OF OR BY BUYER, (III) USE OF THE PRODUCTS IN A MANNER FOR WHICH THEY WERE NOT DESIGNED, OR (IV) IMPROPER STORAGE AND HANDLING OF THE PRODUCTS. Unless otherwise expressly stated on the Product or in the documentation accompanying the Product, the Product is intended for research only and is not to be used for any other purpose, including without limitation, unauthorized commercial uses, in vitro diagnostic uses, ex vivo or in vivo therapeutic uses, or any type of consumption by or application to human or animals.