

EGF Recombinant Rabbit Monoclonal Antibody (3H11L6)

Product Details	
Size	100 µg
Species Reactivity	Human
Published Species	Horse
Host/Isotope	Rabbit / IgG
Class	Recombinant Monoclonal
Type	Antibody
Clone	3H11L6
Conjugate	Unconjugated
Immunogen	human EGF
Form	Liquid
Concentration	0.5 mg/mL
Purification	Protein A
Storage buffer	PBS
Contains	0.09% sodium azide
Storage Conditions	Store at 4°C short term. For long term storage, store at -20°C, avoiding freeze/thaw cycles.
RRID	AB_2532492

Applications	Tested	Dilution	Published
Immunohistochemistry (IHC)	-	1:50	1 Publication
ELISA (ELISA)	✓	Assay Dependent	
Immunocytochemistry (ICC)	✓	Assay Dependent	

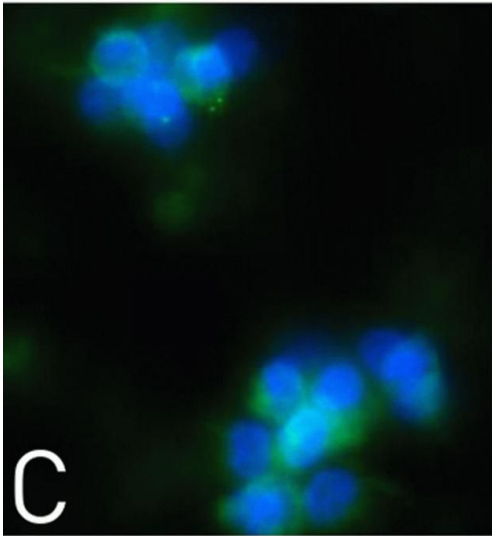
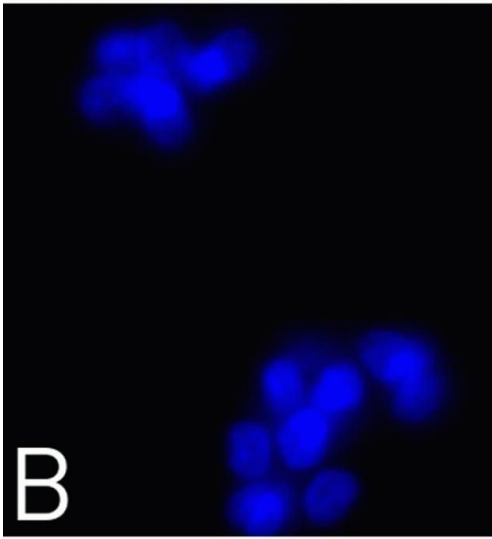
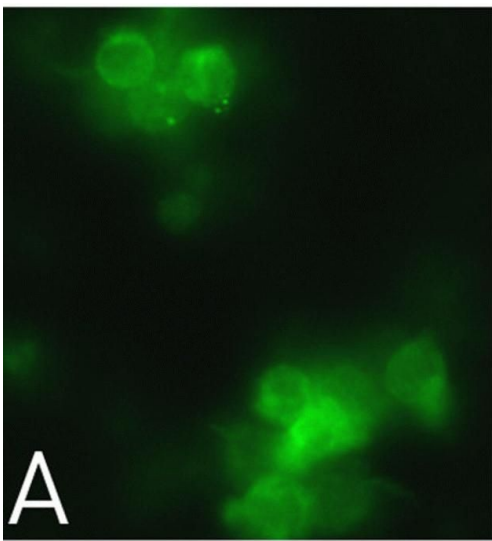
Product Specific Information

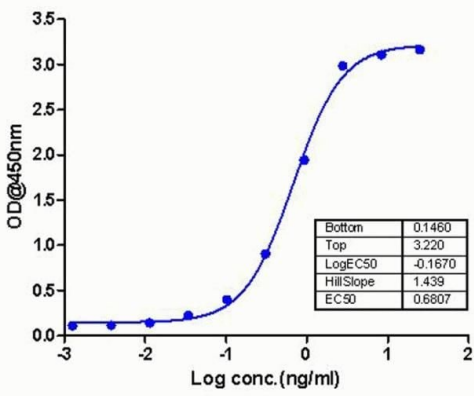
Recombinant rabbit monoclonal antibodies are produced using in vitro expression systems. The expression systems are developed by cloning in the specific antibody DNA sequences from immunoreactive rabbits. Then, individual clones are screened to select the best candidates for production. The advantages of using recombinant rabbit monoclonal antibodies include: better specificity and sensitivity, lot-to-lot consistency, animal origin-free formulations, and broader immunoreactivity to diverse targets due to larger rabbit immune repertoire.

Product Images For EGF Recombinant Rabbit Monoclonal Antibody (3H11L6)

EGF Antibody (701538) in IF

Immunocytochemistry analysis of Human PBMCs stained with EGF Recombinant Rabbit Monoclonal Antibody (Product # 701538) using Alexa Fluor® 488 Goat anti-Rabbit as a secondary antibody ("a", green) and DAPI to stain the nuclei ("b", blue). A composite image of cells showing nuclear and epidermal localization of EGF is also shown ("c").





EGF Antibody (701538) in ELISA

Sandwich ELISA analysis was performed using EGF Recombinant Rabbit Monoclonal Antibody (Product # 701538) at 2 µg/mL. A ten point standard curve was plotted with full length active recombinant EGF protein as a standard with concentrations ranging from 0.3 pg/mL to 12.5 ng/mL. An Anti-EGF antibody conjugated to biotin was used as a detector at a concentration of 2 µg/mL. A non-linear regression analysis (4 PL) was performed and LOD and LOQ for the antibody pair was determined.

1 Reference

Immunohistochemistry (1)

Placenta

Localisation of epidermal growth factor (EGF), its specific receptor (EGF-R) and aromatase at the materno-fetal interface during placentation in the pregnant mare.

"701538 was used in Immunohistochemistry to show that in equine pregnancy, EGF synergises with maternal and foetal oestrogens to drive growth and vascularisation of the placenta."

Authors: Allen WR, Gower S, Wilsher S

Species
Horse

Dilution
1:50

Year
2017

For Research Use Only. Not for use in diagnostic procedures. Not for resale without express authorization. Products are warranted to operate or perform substantially in conformance with published Product specifications in effect at the time of sale, as set forth in the Production documentation, specifications and/or accompanying package inserts ("Documentation"). No claim of suitability for use in applications regulated by FDA is made. The warranty provided herein is valid only when used by properly trained individuals. Unless otherwise stated in the Documentation, this warranty is limited to one year from date of shipment when the Product is subjected to normal, proper and intended usage. This warranty does not extend to anyone other than the Buyer. Any model or sample furnished to Buyer is merely illustrative of the general type and quality of goods and does not represent that any Product will conform to such model or sample. NO OTHER WARRANTIES, EXPRESS OR IMPLIED, ARE GRANTED INCLUDING WITHOUT LIMITATION, IMPLIED WARRANTIES OF MERCHANTABILITY, FITNESS FOR ANY PARTICULAR PURPOSE, OR NON INFRINGEMENT. BUYER'S EXCLUSIVE REMEDY FOR NON-CONFORMING PRODUCTS DURING THE WARRANTY PERIOD IS LIMITED TO REPAIR, REPLACEMENT OF OR REFUND FOR THE NON-CONFORMING PRODUCT(S) AT SELLER'S SOLE OPTION. THERE IS NO OBLIGATION TO REPAIR, REPLACE OR REFUND FOR PRODUCTS AS THE RESULT OF (I) ACCIDENT, DISASTER OR EVENT OF FORCE MAJEURE, (II) MISUSE, FAULT OR NEGLIGENCE OF OR BY BUYER, (III) USE OF THE PRODUCTS IN A MANNER FOR WHICH THEY WERE NOT DESIGNED, OR (IV) IMPROPER STORAGE AND HANDLING OF THE PRODUCTS. Unless otherwise expressly stated on the Product or in the documentation accompanying the Product, the Product is intended for research only and is not to be used for any other purpose, including without limitation, unauthorized commercial uses, in vitro diagnostic uses, ex vivo or in vivo therapeutic uses, or any type of consumption by or application to human or animals.