

Glutamine Synthetase Recombinant Rabbit Monoclonal Antibody (7H9L16)

Product Details	
Size	100 µg
Species Reactivity	Human, Mouse, Rat
Host/Isotope	Rabbit / IgG
Class	Recombinant Monoclonal
Type	Antibody
Clone	7H9L16
Conjugate	Unconjugated
Immunogen	Protein corresponding to Human GLUL (aa 2-373)
Form	Liquid
Concentration	0.5 mg/mL
Purification	Protein A
Storage buffer	PBS, pH 7.2
Contains	0.09% sodium azide
Storage Conditions	Store at 4°C short term. For long term storage, store at -20°C, avoiding freeze/thaw cycles.
RRID	AB_2633045

Applications	Tested	Dilution	Published
Immunocytochemistry (ICC)	✓	2 µg/mL	
Immunofluorescence (IF)	✓	2 µg/mL	
Western Blot (WB)	✓	1-2 µg/mL	

Product Specific Information

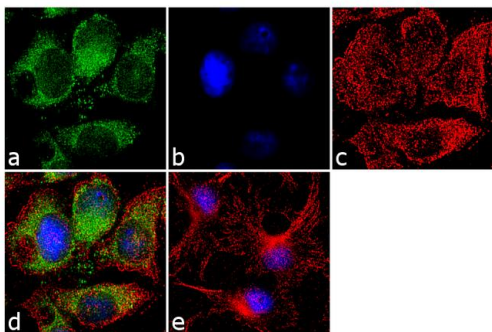
This antibody is predicted to react with Monkey, Cat and Pig.

Recombinant rabbit monoclonal antibodies are produced using in vitro expression systems. The expression systems are developed by cloning in the specific antibody DNA sequences from immunoreactive rabbits. Then, individual clones are screened to select the best candidates for production. The advantages of using recombinant rabbit monoclonal antibodies include: better specificity and sensitivity, lot-to-lot consistency, animal origin-free formulations, and broader immunoreactivity to diverse targets due to larger rabbit immune repertoire.

Product Images For Glutamine Synthetase Recombinant Rabbit Monoclonal Antibody (7H9L16)

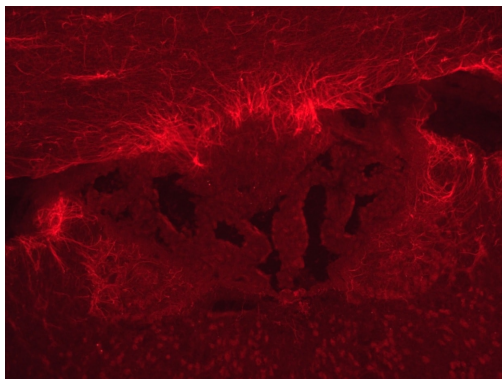
Glutamine Synthetase Antibody (701989) in IF

Immunofluorescence was performed on methanol fixed HepG2 cells for detection of endogenous Glutaminase synthetase using Glutaminase synthetase Recombinant Rabbit Monoclonal Antibody (Product # 701989, 2 µg/mL) and labeled with Goat anti-Rabbit IgG (H+L) Superclonal™ Secondary Antibody, Alexa Fluor® 488 conjugate (Product # A27034, 1:2000). Cytoskeleton was stained with alpha-Tubulin Monoclonal Antibody (Product # 32-2500, 1 µg/mL) followed by Goat anti-Mouse IgG Secondary Antibody, Alexa Fluor® 594 conjugate (Product # A-11032, 1:400). Panel a) shows representative cells that were stained for detection and localization of Glutaminase synthetase protein (green), Panel b) is stained for nuclei (blue) using SlowFade® Gold Antifade Mountant with DAPI (Product # S36938). Panel c) represents cytoskeletal alpha-tubulin staining (red). Panel d) is a composite image of Panels a, b and c clearly demonstrating cytoplasmic localization of Glutaminase synthetase. Panel e) represents control cells with no primary antibody to assess background. The images were captured at 60X magnification.



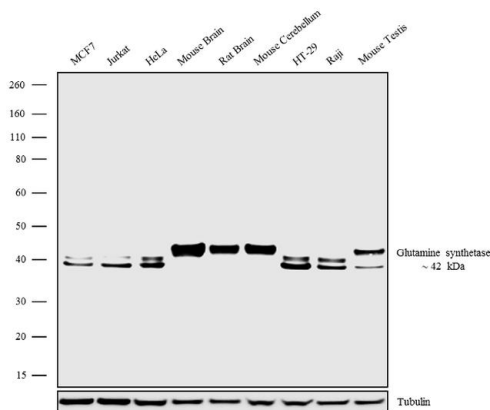
Glutamine Synthetase Antibody (701989) in IHC (F)

Immunofluorescence analysis of glutamine synthetase (red) in mouse brain cortex tissue. The tissues were fixed with 4% PFA for 1 week, there is no permeabilization process because of frozen section, and blocked with 3% donkey serum for 1hr in RT. Tissues were stained with a recombinant monoclonal glutamine synthetase antibody (Product # 70189) at a dilution of 1:1000 in PBS for overnight in 4°C, and then incubated with secondary donkey anti-rabbit IgG (H+L)- Alexa Fluor 594 antibody (Product # A-21207) at a dilution of 1:500 for 1hour. Image was taken at 20X magnification. Data courtesy of Cheryl Namkoong at Seoul National University, Korea.



Glutamine Synthetase Antibody (701989) in WB

Western blot analysis was performed on whole cell extracts (30 µg lysate) of whole cell extracts (30 µg of lysate) of MCF7 (Lane1), Jurkat (Lane 2), HeLa (Lane 3), Mouse Brain (lane 4), Rat Brain (Lane 5), Mouse Cerebellum (lane 6), HT-29 (lane 7), Raji (lane 8), and Mouse Testis (Lane 9). The blots were probed with Glutamine synthetase Recombinant Rabbit Monoclonal Antibody (Product # 701989, 1-2 µg/mL) and detected by chemiluminescence using Goat anti-Rabbit IgG (H+L) Superclonal™ Secondary Antibody, HRP conjugate (Product # A27036, 0.4 µg/mL, 1:2500 dilution). A 42 kDa band corresponding to Glutamine synthetase was observed across cell lines and tissue lysates tested and the observed molecular weight is species specific. Known quantity of protein samples were electrophoresed using Novex® NuPAGE® 4-12% Bis-Tris gel (Product # NP0321BOX), XCell SureLock™ Electrophoresis System (Product # EI0002) and Novex® Sharp Pre-Stained Protein Standard (Product # LC5800). Resolved proteins were then transferred onto a nitrocellulose membrane with iBlot® Dry Blotting System (Product # IB21001). The membrane was probed with the relevant primary and secondary Antibody following blocking with 5% skimmed milk. Chemiluminescent detection was performed using Pierce™ ECL Western blotting Substrate (Product # 32106).



For Research Use Only. Not for use in diagnostic procedures. Not for resale without express authorization. Products are warranted to operate or perform substantially in conformance with published Product specifications in effect at the time of sale, as set forth in the Production documentation, specifications and/or accompanying package inserts ("Documentation"). No claim of suitability for use in applications regulated by FDA is made. The warranty provided herein is valid only when used by properly trained individuals. Unless otherwise stated in the Documentation, this warranty is limited to one year from date of shipment when the Product is subjected to normal, proper and intended usage. This warranty does not extend to anyone other than the Buyer. Any model or sample furnished to Buyer is merely illustrative of the general type and quality of goods and does not represent that any Product will conform to such model or sample. NO OTHER WARRANTIES, EXPRESS OR IMPLIED, ARE GRANTED INCLUDING WITHOUT LIMITATION, IMPLIED WARRANTIES OF MERCHANTABILITY, FITNESS FOR ANY PARTICULAR PURPOSE, OR NON-INFRINGEMENT. BUYER'S EXCLUSIVE REMEDY FOR NON-CONFORMING PRODUCTS DURING THE WARRANTY PERIOD IS LIMITED TO REPAIR, REPLACEMENT OF OR REFUND FOR THE NON-CONFORMING PRODUCT(S) AT SELLER'S SOLE OPTION. THERE IS NO OBLIGATION TO REPAIR, REPLACE OR REFUND FOR PRODUCTS AS THE RESULT OF (I) ACCIDENT, DISASTER OR EVENT OF FORCE MAJEURE, (II) MISUSE, FAULT OR NEGLIGENCE OF OR BY BUYER, (III) USE OF THE PRODUCTS IN A MANNER FOR WHICH THEY WERE NOT DESIGNED, OR (IV) IMPROPER STORAGE AND HANDLING OF THE PRODUCTS. Unless otherwise expressly stated on the Product or in the documentation accompanying the Product, the Product is intended for research only and is not to be used for any other purpose, including without limitation, unauthorized commercial uses, in vitro diagnostic uses, ex vivo or in vivo therapeutic uses, or any type of consumption by or application to human or animals.