

14-3-3 zeta Recombinant Rabbit Monoclonal Antibody (1H9L19)

Product Details	
Size	100 µg
Species Reactivity	Cynomolgus monkey, Human, Mouse, Rat
Host/Isotype	Rabbit / IgG
Expression system	Expi293
Class	Recombinant Monoclonal
Type	Antibody
Clone	1H9L19
Conjugate	Unconjugated
Immunogen	Peptides corresponding to human 14-3-3 delta/zeta (aa 68-86,131-149]
Form	Liquid
Concentration	0.5 mg/mL
Purification	Protein A
Storage buffer	PBS, pH 7.4
Contains	0.09% sodium azide
Storage conditions	Store at 4°C short term. For long term storage, store at -20°C, avoiding freeze/thaw cycles.
RRID	AB_2663061

Applications	Tested Dilution	Publications
Western Blot (WB)	1-2 µg/mL	-
Immunocytochemistry (ICC/IF)	2 µg/mL	-

Product Specific Information

This antibody is predicted to react with Pig, Rat, Horse

Recombinant rabbit monoclonal antibodies are produced using in vitro expression systems. The expression systems are developed by cloning in the specific antibody DNA sequences from immunoreactive rabbits. Then, individual clones are screened to select the best candidates for production. The advantages of using recombinant rabbit monoclonal antibodies include: better specificity and sensitivity, lot-to-lot consistency, animal origin-free formulations, and broader immunoreactivity to diverse targets due to larger rabbit immune repertoire.

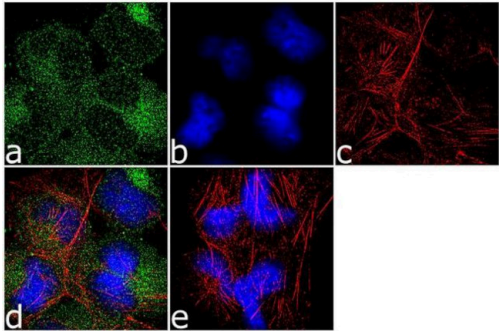
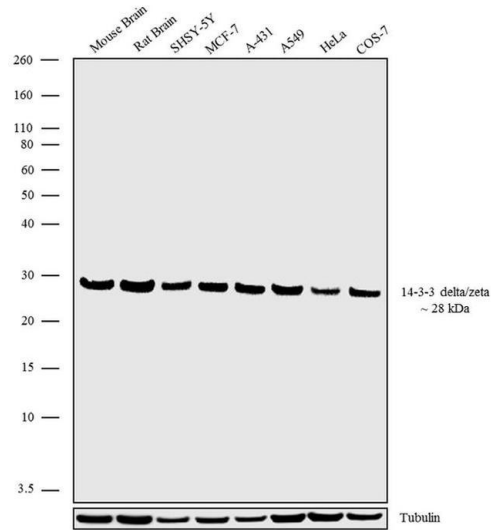
Product Images For 14-3-3 zeta Recombinant Rabbit Monoclonal Antibody (1H9L19)

14-3-3 zeta Antibody (702477) in WB

Western blot analysis was performed on Tissue extracts (30 µg lysate) of Mouse Brain (Lane 1), Rat Brain (Lane 2) and whole cell extracts (30 µg lysate) of SHSY-5Y (Lane 3), MCF-7 (Lane 4), A-431 (Lane 5), A549 (Lane 6), HeLa (Lane 7) and COS-7 (Lane 8). The blots were probed with Anti-14-3-3 delta/zeta Recombinant Rabbit Monoclonal Antibody (Product # 702477, 1-2 µg/mL) and detected by chemiluminescence using Goat anti-Rabbit IgG (Heavy Chain) Superclonal Secondary Antibody, HRP conjugate (Product # A27036, 0.4 µg/mL, 1:2500 dilution). A 28 kDa band corresponding to 14-3-3 delta/zeta was observed across the tissues and cell lines tested. Known quantity of protein samples were electrophoresed using Novex® NuPAGE® 4-12% Bis-Tris gel (Product # NP0321BOX), XCell SureLock Electrophoresis System (Product # EI0002) and Novex® Sharp Pre-Stained Protein Standard (Product # LC5800). Resolved proteins were then transferred onto a nitrocellulose membrane with iBlot® Dry Blotting System (Product # IB21001). The membrane was probed with the relevant primary and secondary Antibody following blocking with 5% skimmed milk. Chemiluminescent detection was performed using Pierce™ ECL Western blotting Substrate (Product # 32106).

14-3-3 zeta Antibody (702477) in ICC/IF

For immunofluorescence analysis, T98G cells were fixed and permeabilized for detection of endogenous 14-3-3 delta/zeta using Anti-14-3-3 delta/zeta Recombinant Rabbit Monoclonal Antibody (Product # 702477, 2 µg/mL) and labeled with Goat anti-Rabbit IgG (Heavy Chain) Superclonal Secondary Antibody, Alexa Fluor® 488 conjugate (Product # A27034, 1:2000). Panel a) shows representative cells that were stained for detection and localization of 14-3-3 delta/zeta protein (green), Panel b) is stained for nuclei (blue) using SlowFade® Gold Antifade Mountant with DAPI (Product # S36938). Panel c) represents cytoskeletal F-actin staining using Rhodamine Phalloidin (Product # R415, 1:300). Panel d) is a composite image of Panels a, b and c clearly demonstrating cytoplasmic localization of 14-3-3 delta/zeta. Panel e) represents control cells with no primary antibody to assess background. The images were captured at 60X magnification.



For Research Use Only. Not for use in diagnostic procedures. Not for resale without express authorization. Products are warranted to operate or perform substantially in conformance with published Product specifications in effect at the time of sale, as set forth in the Production documentation, specifications and/or accompanying package inserts ("Documentation"). No claim of suitability for use in applications regulated by FDA is made. The warranty provided herein is valid only when used by properly trained individuals. Unless otherwise stated in the Documentation, this warranty is limited to one year from date of shipment when the Product is subjected to normal, proper and intended usage. This warranty does not extend to anyone other than the Buyer. Any model or sample furnished to Buyer is merely illustrative of the general type and quality of goods and does not represent that any Product will conform to such model or sample. NO OTHER WARRANTIES, EXPRESS OR IMPLIED, ARE GRANTED INCLUDING WITHOUT LIMITATION, IMPLIED WARRANTIES OF MERCHANTABILITY, FITNESS FOR ANY PARTICULAR PURPOSE, OR NON INFRINGEMENT. BUYER'S EXCLUSIVE REMEDY FOR NON-CONFORMING PRODUCTS DURING THE WARRANTY PERIOD IS LIMITED TO REPAIR, REPLACEMENT OF OR REFUND FOR THE NON-CONFORMING PRODUCT(S) AT SELLER'S SOLE OPTION. THERE IS NO OBLIGATION TO REPAIR, REPLACE OR REFUND FOR PRODUCTS AS THE RESULT OF (I) ACCIDENT, DISASTER OR EVENT OF FORCE MAJEURE, (II) MISUSE, FAULT OR NEGLIGENCE OF OR BY BUYER, (III) USE OF THE PRODUCTS IN A MANNER FOR WHICH THEY WERE NOT DESIGNED, OR (IV) IMPROPER STORAGE AND HANDLING OF THE PRODUCTS. Unless otherwise expressly stated on the Product or in the documentation accompanying the Product, the Product is intended for research only and is not to be used for any other purpose, including without limitation, unauthorized commercial uses, in vitro diagnostic uses, ex vivo or in vivo therapeutic uses, or any type of consumption by or application to human or animals.