

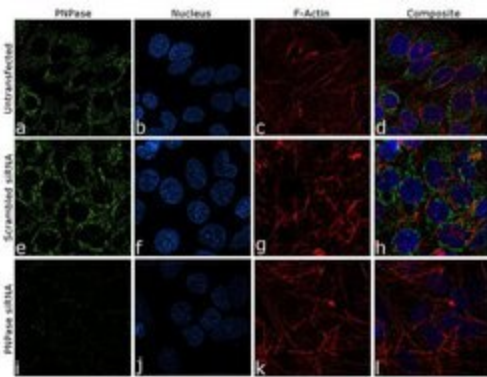
# PNPase Recombinant Rabbit Monoclonal Antibody (24H24L10)

Product Details	
Size	100 µg
Species Reactivity	Human
Host/Isotype	Rabbit / IgG
Class	Recombinant Monoclonal
Type	Antibody
Clone	24H24L10
Conjugate	Unconjugated
Immunogen	Protein corresponding to human PNPase [aa46-aa669]
Form	Liquid
Concentration	0.5 mg/mL
Purification	Protein A
Storage buffer	PBS, pH 7.4
Contains	0.09% sodium azide
Storage Conditions	Store at 4°C short term. For long term storage, store at -20°C, avoiding freeze/thaw cycles.
RRID	AB_2809225

Applications	Tested Dilution	Publications
Western Blot (WB)	1:500	-
Immunocytochemistry (ICC/IF)	1:100 - 1:500	-

## Product Specific Information

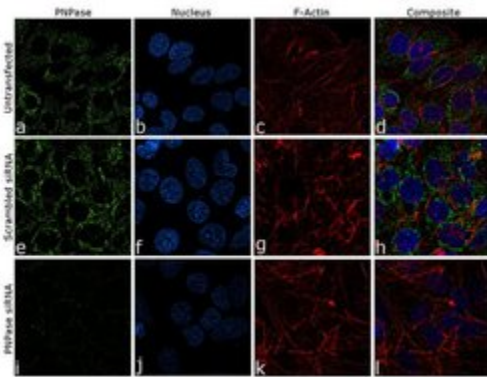
This antibody is predicted to react with Mouse, Rat, Bovine.



**PNPase Antibody (703101)**

Antibody specificity was demonstrated by siRNA-mediated knockdown of the target protein. Hep G2 cells were transfected with PNPase specific siRNA and decrease in signal intensity was observed in immunofluorescence application using Anti-PNPase Rabbit Recombinant Monoclonal Antibody (Product # 703101). Knockdown validation info.

**Product Images For PNPase Recombinant Rabbit Monoclonal Antibody (24H24L10)**

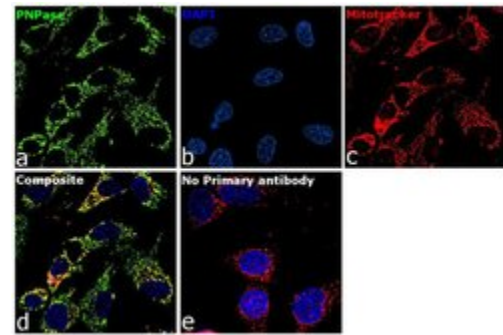


**PNPase Antibody (703101) in ICC/IF**

Knockdown of PNPase was achieved by transfecting Hep G2 cells with specific validated siRNA (Silencer® select Product # s40091). Immunofluorescence analysis was performed on HeLa cells (untransfected, panel a-d), transfected with PNPase specific siRNA (panel i-l) or non-specific scrambled siRNA (panels e-h). Cells were fixed, permeabilized, and labeled with Anti-PNPase Rabbit Recombinant Monoclonal Antibody (Product # 703101, 1:500 dilution), followed by Goat anti-Rabbit IgG (H+L) Superclonal™ Secondary Antibody, Alexa Fluor® 488 conjugate (Product # A27034, 1:2000). Nuclei (blue) were stained using ProLong™ Diamond Antifade Mountant with DAPI (Product # P36962), and Rhodamine Phalloidin (Product # R415, 1:300) was used for cytoskeletal F-actin (red) staining. Significant reduction of the signal was observed upon siRNA mediated knockdown (panel i-l) confirming the specificity of the antibody to PNPase (green). The images were captured at 60X magnification.

**PNPase Antibody (703101) in ICC/IF**

For immunofluorescence analysis, Hep G2 cells were fixed and permeabilized for detection of endogenous PNPase using Anti-PNPase Rabbit Recombinant Monoclonal Antibody (Product # 703101, 1:100 dilution) and labeled with Goat anti-Rabbit IgG (H+L) Superclonal™ Secondary Antibody, Alexa Fluor® 488 conjugate (Product # A27034, 1:2000). Panel a) shows representative cells that were stained for detection and localization of PNPase protein (green), Panel b) is stained for nuclei (blue) using ProLong™ Diamond Antifade Mountant with DAPI (Product # P36962). Panel c) represents mitochondrial staining using MitoTracker® Red CMXRos (Product # M-7512). Panel d) is a composite image of Panels a, b and c clearly demonstrating co-localization of PNPase with mitotracker which specifically binds to the mitochondria. Panel e) represents control cells without primary antibody to assess background. The images were captured at 60X magnification.



View more figures on [thermofisher.com](http://thermofisher.com)

For Research Use Only. Not for use in diagnostic procedures. Not for resale without express authorization. Products are warranted to operate or perform substantially in conformance with published Product specifications in effect at the time of sale, as set forth in the Production documentation, specifications and/or accompanying package inserts ("Documentation"). No claim of suitability for use in applications regulated by FDA is made. The warranty provided herein is valid only when used by properly trained individuals. Unless otherwise stated in the Documentation, this warranty is limited to one year from date of shipment when the Product is subjected to normal, proper and intended usage. This warranty does not extend to anyone other than the Buyer. Any model or sample furnished to Buyer is merely illustrative of the general type and quality of goods and does not represent that any Product will conform to such model or sample. NO OTHER WARRANTIES, EXPRESS OR IMPLIED, ARE GRANTED INCLUDING WITHOUT LIMITATION, IMPLIED WARRANTIES OF MERCHANTABILITY, FITNESS FOR ANY PARTICULAR PURPOSE, OR NON INFRINGEMENT. BUYER'S EXCLUSIVE REMEDY FOR NON-CONFORMING PRODUCTS DURING THE WARRANTY PERIOD IS LIMITED TO REPAIR, REPLACEMENT OF OR REFUND FOR THE NON-CONFORMING PRODUCT(S) AT SELLER'S SOLE OPTION. THERE IS NO OBLIGATION TO REPAIR, REPLACE OR REFUND FOR PRODUCTS AS THE RESULT OF (I) ACCIDENT, DISASTER OR EVENT OF FORCE MAJEURE, (II) MISUSE, FAULT OR NEGLIGENCE OF OR BY BUYER, (III) USE OF THE PRODUCTS IN A MANNER FOR WHICH THEY WERE NOT DESIGNED, OR (IV) IMPROPER STORAGE AND HANDLING OF THE PRODUCTS. Unless otherwise expressly stated on the Product or in the documentation accompanying the Product, the Product is intended for research only and is not to be used for any other purpose, including without limitation, unauthorized commercial uses, in vitro diagnostic uses, ex vivo or in vivo therapeutic uses, or any type of consumption by or application to human or animals.