

# PRMT6 Recombinant Rabbit Monoclonal Antibody (8H9L19)

Product Details	
Size	100 µg
Species Reactivity	Human
Host/Isotype	Rabbit / IgG
Expression system	Expi293
Class	Recombinant Monoclonal
Type	Antibody
Clone	8H9L19
Conjugate	Unconjugated
Immunogen	Peptides corresponding to human PRMT6 [1) aa37-aa49 2) aa358-aa375]
Form	Liquid
Concentration	0.5 mg/mL
Purification	Protein A
Storage buffer	PBS, pH 7.4
Contains	0.09% sodium azide
Storage conditions	Store at 4°C short term. For long term storage, store at -20°C, avoiding freeze/thaw cycles.
RRID	AB_2809240

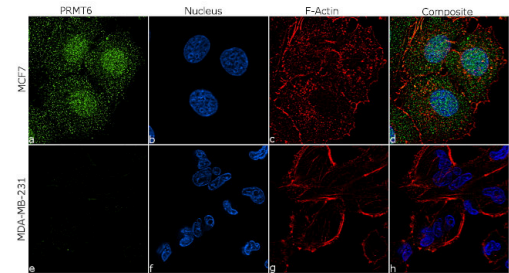
Applications	Tested Dilution	Publications
Immunocytochemistry (ICC/IF)	1:100	-
ChIP assay (ChIP)	2.5µg/million cells	-

## Product Specific Information

This antibody is predicted to react with Monkey, Pig, Rat, Cat.

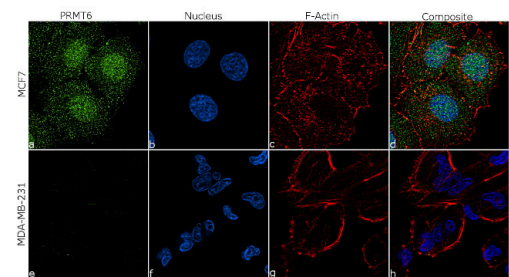
Recombinant rabbit monoclonal antibodies are produced using in vitro expression systems. The expression systems are developed by cloning in the specific antibody DNA sequences from immunoreactive rabbits. Then, individual clones are screened to select the best candidates for production. The advantages of using recombinant rabbit monoclonal antibodies include: better specificity and sensitivity, lot-to-lot consistency, animal origin-free formulations, and broader immunoreactivity to diverse targets due to larger rabbit immune repertoire.

Product Images For PRMT6 Recombinant Rabbit Monoclonal Antibody (8H9L19)



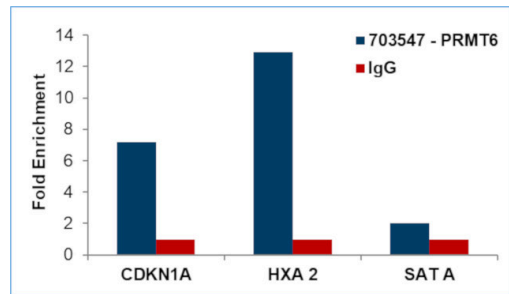
PRMT6 Antibody (703547)

Antibody specificity was demonstrated by detection of differential basal expression of the target across cell models owing to their inherent genetic constitution. Expression of PRMT6 was observed specifically in ER positive breast carcinoma cell line MCF7 in comparison to triple negative breast cancer cell line MDA-MB-231 using Anti-PRMT6 Recombinant Rabbit Monoclonal Antibody (Product # 703547) in Immunofluorescence. {RE}



PRMT6 Antibody (703547) in ICC/IF

For immunofluorescence analysis, MCF7 cells were fixed and permeabilized for detection of endogenous PRMT6 using Anti-PRMT6 Recombinant Rabbit Monoclonal Antibody (Product # 703547, 1:100 dilution) and labeled with Goat anti-Rabbit IgG (Heavy Chain) Superclonal™ Secondary Antibody, Alexa Fluor® 488 conjugate (Product # A27034, 1:2000). Nuclei (blue) were stained using ProLong™ Diamond Antifade Mountant with DAPI (Product # P36962), and Rhodamine Phalloidin (Product # R415, 1:300) was used for cytoskeletal F-actin (red) staining. Panel a-d) clearly demonstrates Nuclear and cytoplasmic localization of PRMT6 in MCF7 cells. Panel e-h) shows no specific staining in MDA-MB-231 cells which is PRMT6 negative, demonstrating specificity. The images were captured at 60X magnification.



PRMT6 Antibody (703547) in ChIP

Enrichment of endogenous PRMT6 protein at specific gene loci using Anti-PRMT6 Antibody: Chromatin Immunoprecipitation (ChIP) was performed using Anti-PRMT6 Recombinant Rabbit Monoclonal Antibody (Product # 703547, 5 µg) on sheared chromatin from 2 million MCF7 cells using the MAGnify ChIP System kit (Product # 49-2024). Normal Rabbit IgG was used as a negative IP control. The purified DNA was analyzed by qPCR with PCR primer pairs over Promoters of CDKN1A, HXA2 (positive) and SAT Alpha (negative). Data is presented as fold enrichment of the antibody signal versus the negative control IgG using the comparative CT method.

View more figures on [thermofisher.com](https://thermofisher.com)

For Research Use Only. Not for use in diagnostic procedures. Not for resale without express authorization. Products are warranted to operate or perform substantially in conformance with published Product specifications in effect at the time of sale, as set forth in the Production documentation, specifications and/or accompanying package inserts ("Documentation"). No claim of suitability for use in applications regulated by FDA is made. The warranty provided herein is valid only when used by properly trained individuals. Unless otherwise stated in the Documentation, this warranty is limited to one year from date of shipment when the Product is subjected to normal, proper and intended usage. This warranty does not extend to anyone other than the Buyer. Any model or sample furnished to Buyer is merely illustrative of the general type and quality of goods and does not represent that any Product will conform to such model or sample. NO OTHER WARRANTIES, EXPRESS OR IMPLIED, ARE GRANTED INCLUDING WITHOUT LIMITATION, IMPLIED WARRANTIES OF MERCHANTABILITY, FITNESS FOR ANY PARTICULAR PURPOSE, OR NON INFRINGEMENT. BUYER'S EXCLUSIVE REMEDY FOR NON-CONFORMING PRODUCTS DURING THE WARRANTY PERIOD IS LIMITED TO REPAIR, REPLACEMENT OF OR REFUND FOR THE NON-CONFORMING PRODUCT(S) AT SELLER'S SOLE OPTION. THERE IS NO OBLIGATION TO REPAIR, REPLACE OR REFUND FOR PRODUCTS AS THE RESULT OF (I) ACCIDENT, DISASTER OR EVENT OF FORCE MAJEURE, (II) MISUSE, FAULT OR NEGLIGENCE OF OR BY BUYER, (III) USE OF THE PRODUCTS IN A MANNER FOR WHICH THEY WERE NOT DESIGNED, OR (IV) IMPROPER STORAGE AND HANDLING OF THE PRODUCTS. Unless otherwise expressly stated on the Product or in the documentation accompanying the Product, the Product is intended for research only and is not to be used for any other purpose, including without limitation, unauthorized commercial uses, in vitro diagnostic uses, ex vivo or in vivo therapeutic uses, or any type of consumption by or application to human or animals.