

PSMA3 Recombinant Rabbit Monoclonal Antibody (17H20L21)

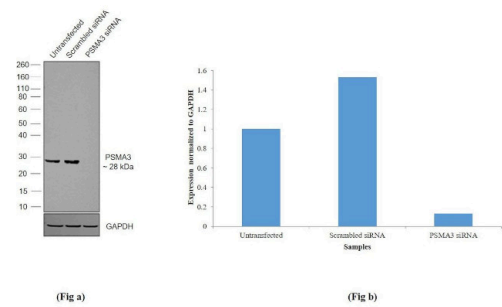
| Product Details | |
|--------------------|--|
| Size | 100 µg |
| Species Reactivity | Human, Mouse |
| Host/Isotype | Rabbit / IgG |
| Expression system | Expi293 |
| Class | Recombinant Monoclonal |
| Type | Antibody |
| Clone | 17H20L21 |
| Conjugate | Unconjugated |
| Immunogen | Peptide corresponding to human PSMA3 [1) aa27-aa41 2) aa220-aa235] |
| Form | Liquid |
| Concentration | 0.5 mg/mL |
| Purification | Protein A |
| Storage buffer | PBS, pH 7.4 |
| Contains | 0.09% sodium azide |
| Storage conditions | Store at 4°C short term. For long term storage, store at -20°C, avoiding freeze/thaw cycles. |
| RRID | AB_2848240 |

| Applications | Tested Dilution | Publications |
|------------------------------|-----------------|--------------|
| Western Blot (WB) | 1:1,000 | - |
| Immunocytochemistry (ICC/IF) | 1:100 | - |

Product Specific Information

This antibody is predicted to react with Rat, Bovine.

Product Images For PSMA3 Recombinant Rabbit Monoclonal Antibody (17H20L21)

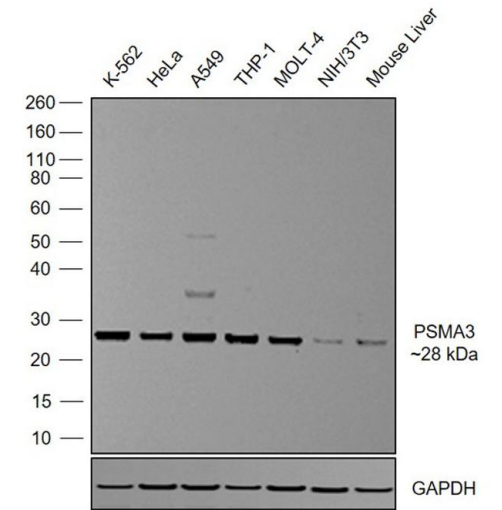


PSMA3 Antibody (703791)

Antibody specificity was demonstrated by siRNA mediated knockdown of the target protein. HEK-293 cells were transfected with PSMA3 siRNA and a decrease in signal intensity was observed in western blot application using Anti-PSMA3 Recombinant Rabbit Monoclonal Antibody (Product # 703791. {KD})

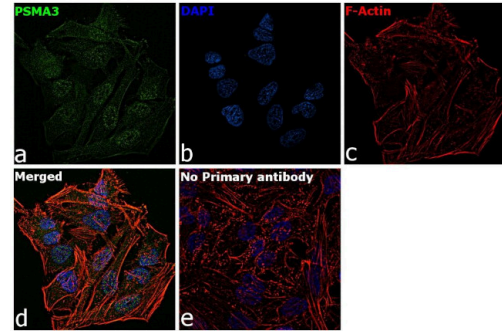
PSMA3 Antibody (703791) in WB

Western blot was performed using Anti-PSMA3 Recombinant Rabbit Monoclonal Antibody (Product # 703791) and a ~28 kDa band corresponding to PSMA3 was observed across cell lines and tissue tested. Whole cell extracts (30 µg lysate) of K-562 (Lane 1), HeLa (Lane 2), A549 (Lane 3), THP-1 (Lane 4), MOLT-4 (Lane 5), NIH/3T3 (Lane 6) and tissue extracts of Mouse Liver (Lane 7) was electrophoresed using Novex® NuPAGE® 4-12 % Bis-Tris gel (Product # NP0322BOX). Resolved proteins were then transferred onto a nitrocellulose membrane by iBlot® 2 Dry Blotting System (Product # IB21001). The blot was probed with the primary antibody (1:1000 dilution) and detected by chemiluminescence using Goat anti-Rabbit IgG (Heavy Chain) Superclonal™ Secondary Antibody, HRP conjugate (Product # A27036, 1:5000 dilution). Chemiluminescent detection was performed using Novex® ECL Chemiluminescent Substrate Reagent Kit (Product # WP20005).



PSMA3 Antibody (703791) in ICC/IF

For immunofluorescence analysis, HeLa cells were fixed and permeabilized for detection of endogenous PSMA3 using Anti-PSMA3 Recombinant Rabbit Monoclonal Antibody (Product # 703791, 1:100 dilution) and labeled with Goat anti-Rabbit IgG (H+L) Highly Cross-Adsorbed Secondary Antibody, Alexa Fluor Plus 488 conjugate (Product # A32731, 1:2000). Panel a) shows representative cells that were stained for detection and localization of PSMA3 protein (green), Panel b) is stained for nuclei (blue) using ProLong™ Diamond Antifade Mountant with DAPI (Product # P36962). Panel c) represents cytoskeletal F-actin staining using Rhodamine Phalloidin (Product # R415, 1:1000). Panel d) is a composite image of Panels a, b and c clearly demonstrating cytoplasmic and nuclear localization of PSMA3. Panel e) represents control cells with no primary antibody to assess background. The images were captured at 60X magnification.



View more figures on thermofisher.com

For Research Use Only. Not for use in diagnostic procedures. Not for resale without express authorization. Products are warranted to operate or perform substantially in conformance with published Product specifications in effect at the time of sale, as set forth in the Production documentation, specifications and/or accompanying package inserts ("Documentation"). No claim of suitability for use in applications regulated by FDA is made. The warranty provided herein is valid only when used by properly trained individuals. Unless otherwise stated in the Documentation, this warranty is limited to one year from date of shipment when the Product is subjected to normal, proper and intended usage. This warranty does not extend to anyone other than the Buyer. Any model or sample furnished to Buyer is merely illustrative of the general type and quality of goods and does not represent that any Product will conform to such model or sample. NO OTHER WARRANTIES, EXPRESS OR IMPLIED, ARE GRANTED INCLUDING WITHOUT LIMITATION, IMPLIED WARRANTIES OF MERCHANTABILITY, FITNESS FOR ANY PARTICULAR PURPOSE, OR NON-INFRINGEMENT. BUYER'S EXCLUSIVE REMEDY FOR NON-CONFORMING PRODUCTS DURING THE WARRANTY PERIOD IS LIMITED TO REPAIR, REPLACEMENT OF OR REFUND FOR THE NON-CONFORMING PRODUCT(S) AT SELLER'S SOLE OPTION. THERE IS NO OBLIGATION TO REPAIR, REPLACE OR REFUND FOR PRODUCTS AS THE RESULT OF (I) ACCIDENT, DISASTER OR EVENT OF FORCE MAJEURE, (II) MISUSE, FAULT OR NEGLIGENCE OF OR BY BUYER, (III) USE OF THE PRODUCTS IN A MANNER FOR WHICH THEY WERE NOT DESIGNED, OR (IV) IMPROPER STORAGE AND HANDLING OF THE PRODUCTS. Unless otherwise expressly stated on the Product or in the documentation accompanying the Product, the Product is intended for research only and is not to be used for any other purpose, including without limitation, unauthorized commercial uses, in vitro diagnostic uses, ex vivo or in vivo therapeutic uses, or any type of consumption by or application to human or animals.