

# Connexin 26 Polyclonal Antibody

Product Details	
Size	50 µg
Species Reactivity	Mouse, Rat
Published Species	Rat, Mouse, Human, Chicken
Host/Isotype	Rabbit / IgG
Class	Polyclonal
Type	Antibody
Conjugate	Unconjugated
Immunogen	Peptide corresponding to a portion of the cytoplasmic loop of rat connexin 26.
Form	Liquid
Concentration	0.25 mg/mL
Purification	Antigen affinity chromatography
Storage buffer	PBS, pH 7.4
Contains	0.1% sodium azide
Storage conditions	-20°C
RRID	AB_2533971

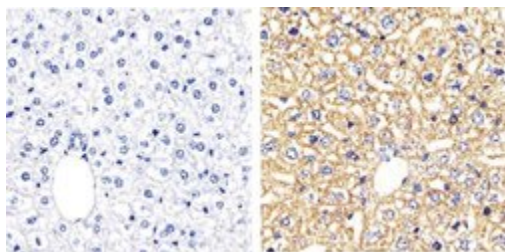
Applications	Tested Dilution	Publications
Western Blot (WB)	2 µg/mL	31 Publications
Immunohistochemistry (IHC)	-	18 Publications
Immunohistochemistry (Paraffin) (IHC (P))	1:20-1:200	7 Publications
Immunohistochemistry (Frozen) (IHC (F))	Assay-dependent	4 Publications
Immunohistochemistry - Free Floating (IHC (Free))	-	1 Publication
Immunocytochemistry (ICC/IF)	-	16 Publications
ELISA (ELISA)	Assay-dependent	-
Immunoprecipitation (IP)	-	3 Publications
Miscellaneous PubMed (Misc)	-	3 Publications

## Product Specific Information

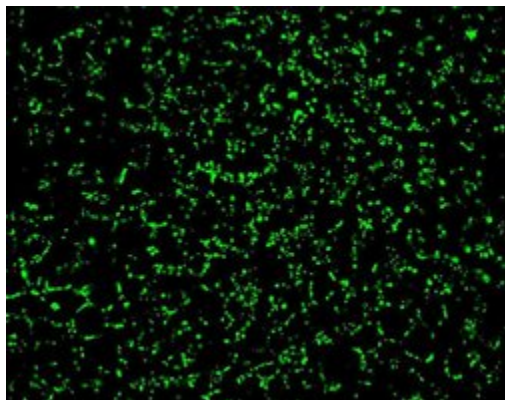
71-0500 was used in the immunofluorescence and western blot analysis to successfully detect Connexin26 in mouse liver sections and homogenate, respectively.

## Product Images For Connexin 26 Polyclonal Antibody

### Connexin 26 Antibody (71-0500) in IHC (P)

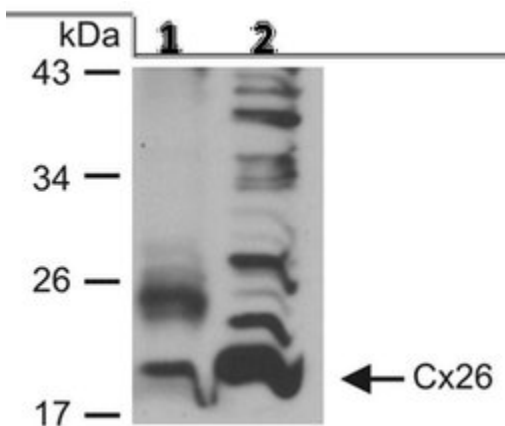


Immunohistochemistry analysis of Connexin 26 showing staining in the membrane of paraffin-embedded mouse liver tissue (right) compared to a negative control without primary antibody (left). To expose target proteins, antigen retrieval was performed using 10mM sodium citrate (pH 6.0), microwaved for 8-15 min. Following antigen retrieval, tissues were blocked in 3% H<sub>2</sub>O<sub>2</sub>-methanol for 15 min at room temperature, washed with ddH<sub>2</sub>O and PBS, and then probed with a Connexin 26 polyclonal antibody (Product # 71-0500) diluted in 3% BSA-PBS at a dilution of 1:100 overnight at 4°C in a humidified chamber. Tissues were washed extensively in PBST and detection was performed using an HRP-conjugated secondary antibody followed by colorimetric detection using a DAB kit. Tissues were counterstained with hematoxylin and dehydrated with ethanol and xylene to prep for mounting.



### Connexin 26 Antibody (71-0500) in IHC

Immunofluorescence analysis of connexin 26 was performed on sections of adult mouse liver. Tissue sections on slides were probed for 24 h at 4°C in a humidified chamber with rabbit polyclonal anti-Cx26 (Product # 71-0500), at an antibody concentration of 1-2 µg/mL diluted in 50 mM Tris-HCl, pH 7.4, containing 1.5% NaCl, 0.3% Triton X-100 (TBST) and 4% normal goat serum. After overnight incubation, sections were washed extensively for 1 h in TBST, and detection of primary antibody was performed for 1.5 h at room temperature with AlexaFluor-488-conjugated donkey anti-rabbit diluted 1:600 in TBST. Sections were then washed in TBST, then in TBS (without triton) and then coverslipped with anti-fade medium. Images were taken on a Zeiss Z2 scanning microscope at x40 objective magnification, and show immunofluorescence labelling of Cx26 localized at gap junctions between liver hepatocytes. Data courtesy of Dr. James Nagy's lab.



### Connexin 26 Antibody (71-0500) in WB

Western blot analysis of Connexin 26 (Cx26) was performed by loading 30 µg of protein from mouse liver homogenate (not boiled) and 7 µL of EZ-RUN Prestained Rec Protein Ladder per well onto a 10% Tris-HCl polyacrylamide gel. Proteins were transferred to a nitrocellulose membrane and blocked in blocking buffer composed of 20 mM Tris-HCl pH 8, 150 mM NaCl and 0.2% Tween-20 (TBST) supplemented with 5% skim milk powder (Carnation) for 1 hr at room temperature. Cx26 was detected at ~26 kDa using an anti-Cx26 antibody (Product # 71-0500, lane 2) at a dilution of 2 µg/mL in TBST supplemented with 1% skim milk powder and incubated overnight at 4°C on a rocking platform, followed by washing and incubation with a goat anti-rabbit IgG horse radish peroxidase (HRP) conjugated secondary antibody at a dilution of 1:5,000 in TBST for 1 hr at room temperature. Chemiluminescent detection was performed using Pierce ECL Western blotting substrate (Product # 32209). Data courtesy of Dr. James Nagy's lab.

View more figures on [thermofisher.com](https://thermofisher.com)

## Western Blot (31)

### Cell reports

#### Cochlear Cell Modeling Using Disease-Specific iPSCs Unveils a Degenerative Phenotype and Suggests Treatments for Congenital Progressive Hearing Loss.

"710500 was used in western blot to show that a degenerative phenotype exhibiting mutant pendrin aggregates and increased susceptibility to cellular stresses in cochlear epithelial cells induced from patient-derived induced pluripotent stem cells"

Authors: Hosoya M,Fujioka M,Sone T,Okamoto S,Akamatsu W,Ukai H,Ueda HR,Ogawa K,Matsunaga T,Okano H

**Species**  
Human

**Dilution**  
1:1000

**Year**  
2017

### Journal of cellular biochemistry

#### Increased Rat Placental Fatty Acid, but Decreased Amino Acid and Glucose Transporters Potentially Modify Intrauterine Programming.

"71-0500 was used in immunohistochemistry - paraffin section and western blot to study modification of intrauterine programming by a decrease in amino acid and glucose transporters and an increase in rat placental fatty acid"

Authors: Nüsken E,Gellhaus A,Kühnel E,Swoboda I,Wohlfarth M,Vohlen C,Schneider H,Dötsch J,Nüsken KD

**Species**  
Not Applicable

**Dilution**  
Not Cited

**Year**  
2016

[View more WB references on thermofisher.com](#)

## Immunohistochemistry (18)

### Frontiers in cellular neuroscience

#### Protective Effects of N<sup>1</sup>-Methylnicotinamide Against High-Fat Diet- and Age-Induced Hearing Loss *via* Moderate Overexpression of Sirtuin 1 Protein.

"Published figure using Connexin 26 polyclonal antibody (Product # 71-0500) in Immunohistochemistry"

Authors: Miwa T

**Species**  
Not Applicable

**Dilution**  
Not Cited

**Year**  
2021

### Current developments in nutrition

#### Localization and Kinetics of the Transferrin-Dependent Iron Transport Machinery in the Mouse Placenta.

"Published figure using Connexin 26 polyclonal antibody (Product # 71-0500) in Immunohistochemistry"

Authors: Cao C,Fleming MD

**Species**  
Mouse  
Not Applicable

**Dilution**  
Not Cited  
Not Cited

**Year**  
2021

[View more IHC references on thermofisher.com](#)

## More applications with references on thermofisher.com

IHC (P) (7)

IHC (F) (4)

IHC (Free) (1)

ICC/IF (16)

IP (3)

Misc (3)

For Research Use Only. Not for use in diagnostic procedures. Not for resale without express authorization. Products are warranted to operate or perform substantially in conformance with published Product specifications in effect at the time of sale, as set forth in the Production documentation, specifications and/or accompanying package inserts ("Documentation"). No claim of suitability for use in applications regulated by FDA is made. The warranty provided herein is valid only when used by properly trained individuals. Unless otherwise stated in the Documentation, this warranty is limited to one year from date of shipment when the Product is subjected to normal, proper and intended usage. This warranty does not extend to anyone other than the Buyer. Any model or sample furnished to Buyer is merely illustrative of the general type and quality of goods and does not represent that any Product will conform to such model or sample. NO OTHER WARRANTIES, EXPRESS OR IMPLIED, ARE GRANTED INCLUDING WITHOUT LIMITATION, IMPLIED WARRANTIES OF MERCHANTABILITY, FITNESS FOR ANY PARTICULAR PURPOSE, OR NON INFRINGEMENT. BUYER'S EXCLUSIVE REMEDY FOR NON-CONFORMING PRODUCTS DURING THE WARRANTY PERIOD IS LIMITED TO REPAIR, REPLACEMENT OF OR REFUND FOR THE NON-CONFORMING PRODUCT(S) AT SELLER'S SOLE OPTION. THERE IS NO OBLIGATION TO REPAIR, REPLACE OR REFUND FOR PRODUCTS AS THE RESULT OF (I) ACCIDENT, DISASTER OR EVENT OF FORCE MAJEURE, (II) MISUSE, FAULT OR NEGLIGENCE OF OR BY BUYER, (III) USE OF THE PRODUCTS IN A MANNER FOR WHICH THEY WERE NOT DESIGNED, OR (IV) IMPROPER STORAGE AND HANDLING OF THE PRODUCTS. Unless otherwise expressly stated on the Product or in the documentation accompanying the Product, the Product is intended for research only and is not to be used for any other purpose, including without limitation, unauthorized commercial uses, in vitro diagnostic uses, ex vivo or in vivo therapeutic uses, or any type of consumption by or application to human or animals.