

Occludin Polyclonal Antibody

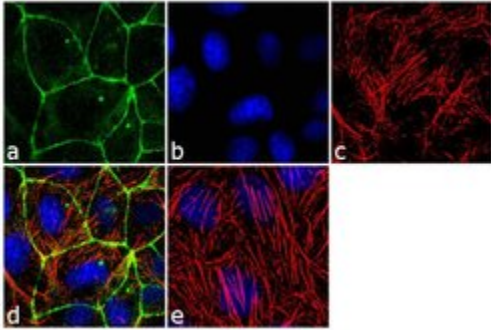
Product Details	
Size	100 µg
Species Reactivity	Dog, Human, Rat
Published Species	Dog, Baboon, Rabbit, Rat, Bacteria, Mouse, Human, Chicken
Host/Isotype	Rabbit / IgG
Class	Polyclonal
Type	Antibody
Conjugate	Unconjugated
Immunogen	A fusion protein containing the C-terminal 150 amino acid region of human occludin.
Form	Liquid
Concentration	0.25 mg/mL
Purification	Antigen affinity chromatography
Storage buffer	PBS, pH 7.4
Contains	0.1% sodium azide
Storage conditions	-20°C
RRID	AB_2533977

Applications	Tested Dilution	Publications
Western Blot (WB)	1.5-2 µg/mL	130 Publications
Immunohistochemistry (IHC)	Assay-dependent	44 Publications
Immunohistochemistry (Paraffin) (IHC (P))	-	23 Publications
Immunohistochemistry (Frozen) (IHC (F))	-	15 Publications
Immunohistochemistry - Free Floating (IHC (Free))	-	2 Publications
Immunocytochemistry (ICC/IF)	2 µg/mL	80 Publications
ELISA (ELISA)	Assay-dependent	-
Immunoprecipitation (IP)	Assay-dependent	5 Publications
Miscellaneous PubMed (Misc)	-	39 Publications

Product Images For Occludin Polyclonal Antibody

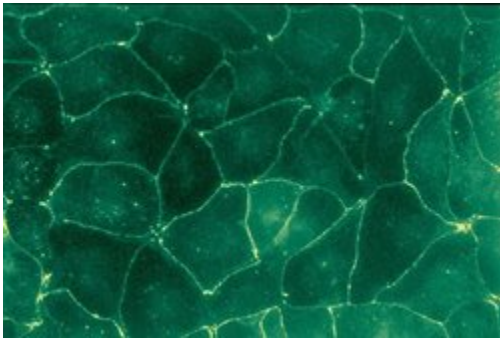
Occludin Antibody (71-1500) in ICC/IF

Immunofluorescence analysis of Occludin was performed using 90% confluent log phase Caco-2 cells. The cells were fixed with 4% paraformaldehyde for 10 minutes, permeabilized with 0.1% Triton™ X-100 for 10 minutes, and blocked with 2% BSA for 1 hour at room temperature. The cells were labeled with Occludin Rabbit Polyclonal Antibody (Product # 71-1500) at 2 µg/mL in 0.1% BSA and incubated for 3 hours at room temperature and then labeled with Goat anti-Rabbit IgG (H+L) Superclonal™ Secondary Antibody, Alexa Fluor® 488 conjugate (Product # A27034) a dilution of 1:2000 for 45 minutes at room temperature (Panel a: green). Nuclei (Panel b: blue) were stained with SlowFade® Gold Antifade Mountant with DAPI (Product # S36938). F-actin (Panel c: red) was stained with Alexa Fluor® 555 Rhodamine Phalloidin (Product # R415, 1:300). Panel d represents the merged image showing cell junctional localization. Panel e shows the no primary antibody control. The images were captured at 60X magnification.



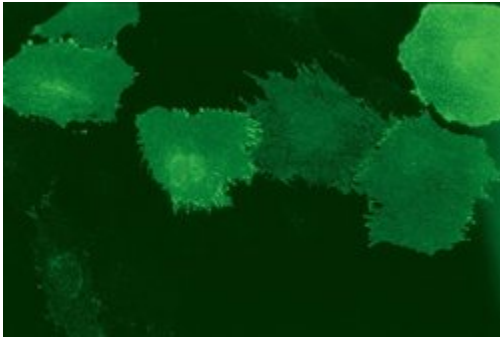
Occludin Antibody (71-1500) in ICC/IF

MDCK canine cells stained with Rabbit anti-Occludin (Product # 71-1500) and Zymed's FITC-Goat Anti-Rabbit IgG (H+L) (Product # 62-6111).



Occludin Antibody (71-1500) in ICC/IF

Immunofluorescent analysis of Occludin using a polyclonal antibody (Product # 71-1500).



[View more figures on thermofisher.com](https://www.thermofisher.com)

Western Blot (130)

American journal of physiology. Cell physiology

Knockdown of occludin expression leads to diverse phenotypic alterations in epithelial cells.

Authors: Yu AS,McCarthy KM,Francis SA,McCormack JM,Lai J,Rogers RA,Lynch RD,Schneeberger EE

Species
Dog

Dilution
Not Cited

Year
2005

Journal of neurochemistry

Neurovascular protection by post-ischemic intravenous injections of the lipoxin A4 receptor agonist, BML-111, in a rat model of ischemic stroke.

"71-1500 was used in western blot to evaluate the neuroprotective effect of the lipoxin A4 receptor agonist, BML-111, in a rat model of ischemic stroke"

Authors: Hawkins KE,DeMars KM,Singh J,Yang C,Cho HS,Frankowski JC,Doré S,Candelario-Jalil E

Species
Rat

Dilution
1:1000

Year
2014

[View more WB references on thermofisher.com](#)

Immunohistochemistry (44)

Journal of cerebral blood flow and metabolism : official journal of the International Society of Cerebral Blood Flow and Metabolism

Matrix metalloproteinase-9 mediates hypoxia-induced vascular leakage in the brain via tight junction rearrangement.

"71-1500 was used in immunohistochemistry and western blot to examine the effect of prolonged hypoxia on blood-brain barrier integrity in vivo"

Authors: Bauer AT,Bürgers HF,Rabie T,Marti HH

Species
Not Applicable

Dilution
1:100

Year
2010

eLife

Planar cell polarity-mediated induction of neural stem cell expansion during axolotl spinal cord regeneration.

"71-1500 was used in immunohistochemistry to characterize axolotl spinal cord regeneration and how induction of neural stem cell expansion occurs by planar cell polarity-mediation"

Authors: Rodrigo Albors A,Tazaki A,Rost F,Nowoshilow S,Chara O,Tanaka EM

Species
Not Applicable

Dilution
1:500

Year
2015

[View more IHC references on thermofisher.com](#)

More applications with references on thermofisher.com

IHC (P) (23)

IHC (F) (15)

IHC (Free) (2)

ICC/IF (80)

IP (5)

Misc (39)

For Research Use Only. Not for use in diagnostic procedures. Not for resale without express authorization. Products are warranted to operate or perform substantially in conformance with published Product specifications in effect at the time of sale, as set forth in the Production documentation, specifications and/or accompanying package inserts ("Documentation"). No claim of suitability for use in applications regulated by FDA is made. The warranty provided herein is valid only when used by properly trained individuals. Unless otherwise stated in the Documentation, this warranty is limited to one year from date of shipment when the Product is subjected to normal, proper and intended usage. This warranty does not extend to anyone other than the Buyer. Any model or sample furnished to Buyer is merely illustrative of the general type and quality of goods and does not represent that any Product will conform to such model or sample. NO OTHER WARRANTIES, EXPRESS OR IMPLIED, ARE GRANTED INCLUDING WITHOUT LIMITATION, IMPLIED WARRANTIES OF MERCHANTABILITY, FITNESS FOR ANY PARTICULAR PURPOSE, OR NON INFRINGEMENT. BUYER'S EXCLUSIVE REMEDY FOR NON-CONFORMING PRODUCTS DURING THE WARRANTY PERIOD IS LIMITED TO REPAIR, REPLACEMENT OF OR REFUND FOR THE NON-CONFORMING PRODUCT(S) AT SELLER'S SOLE OPTION. THERE IS NO OBLIGATION TO REPAIR, REPLACE OR REFUND FOR PRODUCTS AS THE RESULT OF (I) ACCIDENT, DISASTER OR EVENT OF FORCE MAJEURE, (II) MISUSE, FAULT OR NEGLIGENCE OF OR BY BUYER, (III) USE OF THE PRODUCTS IN A MANNER FOR WHICH THEY WERE NOT DESIGNED, OR (IV) IMPROPER STORAGE AND HANDLING OF THE PRODUCTS. Unless otherwise expressly stated on the Product or in the documentation accompanying the Product, the Product is intended for research only and is not to be used for any other purpose, including without limitation, unauthorized commercial uses, in vitro diagnostic uses, ex vivo or in vivo therapeutic uses, or any type of consumption by or application to human or animals.