

CDH11 Polyclonal Antibody

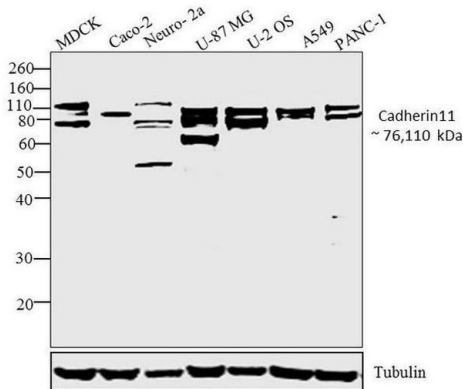
Product Details	
Size	100 µg
Species Reactivity	Human, Mouse
Published Species	Pig, Rat, Chemical, Bovine, Mouse, Human
Host/Isotype	Rabbit / IgG
Class	Polyclonal
Type	Antibody
Conjugate	Unconjugated
Immunogen	Recombinant protein derived from the intracellular domain of the human Cadherin 11 protein.
Form	Liquid
Concentration	0.25 mg/mL
Purification	Antigen affinity chromatography
Storage buffer	PBS, pH 7.4
Contains	0.1% sodium azide
Storage conditions	-20°C
RRID	AB_2533995

Applications	Tested Dilution	Publications
Western Blot (WB)	1-2 µg/mL	8 Publications
Immunohistochemistry (IHC)	Assay-dependent	6 Publications
Immunohistochemistry (Paraffin) (IHC (P))	-	3 Publications
Immunocytochemistry (ICC/IF)	2 µg/mL	4 Publications
ELISA (ELISA)	Assay-dependent	-
Miscellaneous PubMed (Misc)	-	1 Publication

Product Images For CDH11 Polyclonal Antibody

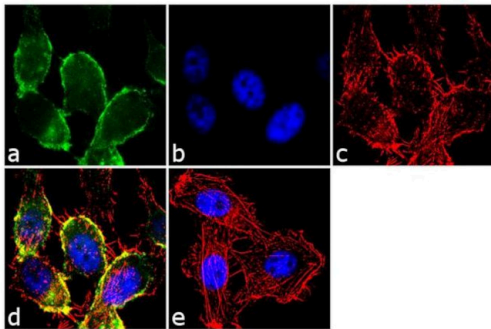
CDH11 Antibody (71-7600) in WB

Western blot analysis was performed on whole cell extracts (30 µg lysate) of MDCK (Lane 1), Caco-2 (Lane 2), Neuro-2a (Lane 3), U-87 MG (Lane 4), U-2 OS (Lane 5), A549 (Lane 6) and PANC 1 (Lane 7). The blots were probed with Anti-Cadherin11 Rabbit Polyclonal Antibody (Product # 71-7600, 1-2 µg/mL) and detected by chemiluminescence using Goat anti-Rabbit IgG (Heavy Chain) Superclonal™ Secondary Antibody, HRP conjugate (Product # A27036, 1:2500 dilution). A ~ 76 and 110 kDa band corresponding to Cadherin11 was observed across cell lines except Caco-2 and A549, where only 76 kDa band was seen. Known quantity of protein samples were electrophoresed using Novex® NuPAGE® 10 % Bis-Tris gel (Product # NP0302BOX), XCell SureLock™ Electrophoresis System (Product # EI0002) and Novex® Sharp Pre-Stained Protein Standard (Product # LC5800). Resolved proteins were then transferred onto a nitrocellulose membrane with Pierce™ Power Blotter System (Product # 22834). The membrane was probed with the relevant primary and secondary Antibody following blocking with 5 % skimmed milk. Chemiluminescent detection was performed using Pierce™ ECL Western Blotting Substrate (Product # 32106).



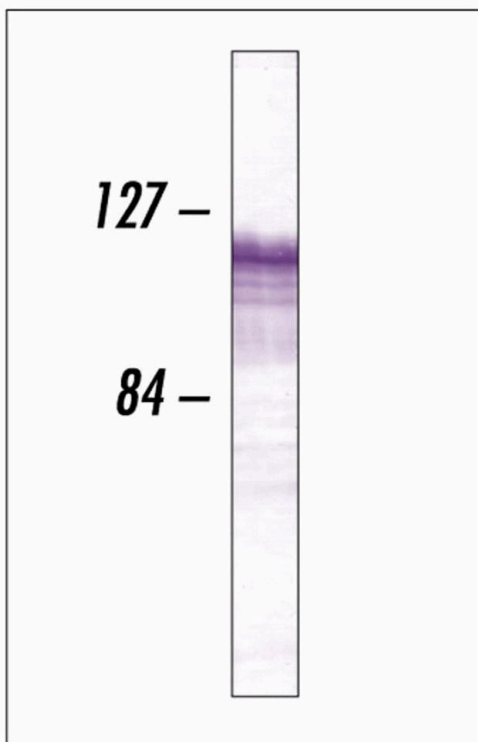
CDH11 Antibody (71-7600) in ICC/IF

Immunofluorescence analysis of CDH11/Cadherin OB was performed using 70% confluent log phase PC-3 cells. The cells were fixed with 4% paraformaldehyde for 10 minutes, permeabilized with 0.1% Triton™ X-100 for 10 minutes, and blocked with 2% BSA for 1 hour at room temperature. The cells were labeled with CDH11/Cadherin OB Rabbit Polyclonal antibody (Product # 71-7600) at 2 µg/mL in 0.1% BSA and incubated for 3 hours at room temperature and then labeled with Goat anti-Rabbit IgG (Heavy Chain) Superclonal™ Secondary Antibody, Alexa Fluor® 488 conjugate (Product # A27034) a dilution of 1:2000 for 45 minutes at room temperature (Panel a: green). Nuclei (Panel b: blue) were stained with SlowFade® Gold Antifade Mountant with DAPI (Product # S36938). F-actin (Panel c: red) was stained with Alexa Fluor® 555 Rhodamine Phalloidin (Product # R415, 1:300). Panel d represents the merged image showing membranous localization. Panel e shows the no primary antibody control. The images were captured at 60X magnification.



CDH11 Antibody (71-7600) in WB

Western blot of MDA MB231 cell lysate using Rabbit anti Cadherin 11 polyclonal antibody (Product # 71-7600)



View more figures on thermofisher.com

22 References

Western Blot (8)

<p>EBioMedicine</p> <p>Potassium channel-driven bioelectric signalling regulates metastasis in triple-negative breast cancer.</p> <p>"Published figure using CDH11 polyclonal antibody (Product # 71-7600) in Western Blot"</p> <p>Authors: Payne SL,Ram P,Srinivasan DH,Le TT,Levin M,Oudin MJ</p>	<p>Year</p> <p>2022</p>
<p>Journal of biomechanics</p> <p>Side-specific valvular endothelial-interstitial cell mechano-communication via cadherin-11.</p> <p>"71-7600 was used in Western Blotting to indicate a potential role for CDH11 expression by AVECs in regulating AVIC contraction and subsequent calcification."</p> <p>Authors: Johnson CL,Merryman WD</p>	<p>Year</p> <p>2021</p> <p>Species</p> <p>Mouse</p> <p>Dilution</p> <p>1:50</p>

View more WB references on thermofisher.com

Immunohistochemistry (6)

<p>Frontiers in cardiovascular medicine</p> <p>Sheep-Specific Immunohistochemical Panel for the Evaluation of Regenerative and Inflammatory Processes in Tissue-Engineered Heart Valves.</p> <p>"71-7600 was used in Immunohistochemistry-immunofluorescence to evaluate a comprehensive sheep-specific panel of antibodies for the immunohistochemical analysis of tissue-engineered heart valve explants."</p> <p>Authors: Dekker S,van Geemen D,van den Bogaerdt AJ,Driessen-Mol A,Aikawa E,Smits AIPM</p>	<p>Year</p> <p>2023</p> <p>Species</p> <p>Human</p> <p>Dilution</p> <p>1:100</p>
<p>Advanced science (Weinheim, Baden-Wurtemberg, Germany)</p> <p>Human Mesenchymal Stem Cell-Derived Miniature Joint System for Disease Modeling and Drug Testing.</p> <p>"Published figure using CDH11 polyclonal antibody (Product # 71-7600) in Immunohistochemistry"</p> <p>Authors: Li Z,Lin Z,Liu S,Yagi H,Zhang X,Yocum L,Romero-Lopez M,Rhee C,Makarczyk MJ,Yu I,Li EN,Fritch MR,Gao Q,Goh KB,O'Donnell B,Hao T,Alexander PG,Mahadik B,Fisher JP,Goodman SB,Bunnell BA,Tuan RS,Lin H</p>	<p>Year</p> <p>2022</p>

View more IHC references on thermofisher.com

More applications with references on thermofisher.com

- IHC (P) (3)
- ICC/IF (4)
- Misc (1)

For Research Use Only. Not for use in diagnostic procedures. Not for resale without express authorization. Products are warranted to operate or perform substantially in conformance with published Product specifications in effect at the time of sale, as set forth in the Production documentation, specifications and/or accompanying package inserts ("Documentation"). No claim of suitability for use in applications regulated by FDA is made. The warranty provided herein is valid only when used by properly trained individuals. Unless otherwise stated in the Documentation, this warranty is limited to one year from date of shipment when the Product is subjected to normal, proper and intended usage. This warranty does not extend to anyone other than the Buyer. Any model or sample furnished to Buyer is merely illustrative of the general type and quality of goods and does not represent that any Product will conform to such model or sample. NO OTHER WARRANTIES, EXPRESS OR IMPLIED, ARE GRANTED INCLUDING WITHOUT LIMITATION, IMPLIED WARRANTIES OF MERCHANTABILITY, FITNESS FOR ANY PARTICULAR PURPOSE, OR NON INFRINGEMENT. BUYER'S EXCLUSIVE REMEDY FOR NON-CONFORMING PRODUCTS DURING THE WARRANTY PERIOD IS LIMITED TO REPAIR, REPLACEMENT OF OR REFUND FOR THE NON-CONFORMING PRODUCT(S) AT SELLER'S SOLE OPTION. THERE IS NO OBLIGATION TO REPAIR, REPLACE OR REFUND FOR PRODUCTS AS THE RESULT OF (I) ACCIDENT, DISASTER OR EVENT OF FORCE MAJEURE, (II) MISUSE, FAULT OR NEGLIGENCE OF OR BY BUYER, (III) USE OF THE PRODUCTS IN A MANNER FOR WHICH THEY WERE NOT DESIGNED, OR (IV) IMPROPER STORAGE AND HANDLING OF THE PRODUCTS. Unless otherwise expressly stated on the Product or in the documentation accompanying the Product, the Product is intended for research only and is not to be used for any other purpose, including without limitation, unauthorized commercial uses, in vitro diagnostic uses, ex vivo or in vivo therapeutic uses, or any type of consumption by or application to human or animals.