

Claudin 1 Polyclonal Antibody (MH25)

Product Details	
Size	100 µg
Species Reactivity	Dog, Human, Mouse, Rat
Published Species	Tag, Avian, Pig, Rat, Virus, Bovine, Fish, Mouse, Human, Chicken, Dog, Rabbit
Host/Isotype	Rabbit / IgG
Class	Polyclonal
Type	Antibody
Clone	MH25
Conjugate	Unconjugated
Immunogen	A synthetic peptide derived from the C-terminus of the human/mouse Claudin-1 protein.
Form	Liquid
Concentration	0.25 mg/mL
Purification	Antigen affinity chromatography
Storage buffer	PBS, pH 7.4
Contains	0.1% sodium azide
Storage conditions	-20°C
RRID	AB_2533997

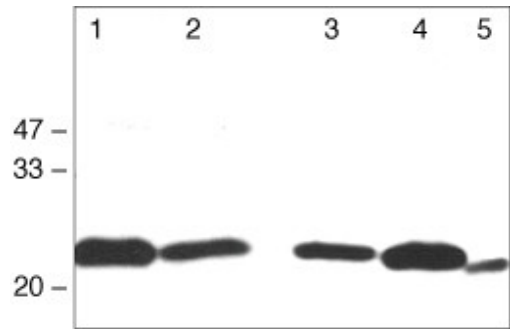
Applications	Tested Dilution	Publications
Western Blot (WB)	1-2 µg/mL	66 Publications
Immunohistochemistry (IHC)	-	34 Publications
Immunohistochemistry (Paraffin) (IHC (P))	1:10-1:100	5 Publications
Immunohistochemistry (Frozen) (IHC (F))	-	5 Publications
Immunocytochemistry (ICC/IF)	-	41 Publications
ELISA (ELISA)	0.1-1.0 µg/mL	-
Immunoprecipitation (IP)	-	4 Publications
Miscellaneous PubMed (Misc)	-	5 Publications

Product Specific Information

This antibody reacts with the ~ 22 kDa Claudin-1 protein. Reactivity was confirmed by western blotting and immunofluorescence. Positive controls include MDCK cells (dog), Caco-2cells (human), mouse liver, rat liver, and rat kidney.

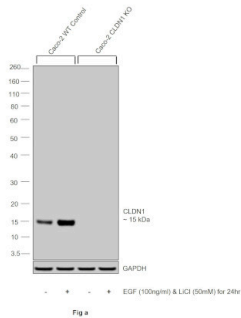
NOTE: This antibody strongly cross reacts with the Claudin-3 protein. It has been observed in western blotting inhibition studies using Caco-2 cell lysates, that this antibody is inhibited by addition of Claudin-3 peptide. For a Claudin-1 specific antibody that does not cross-react with Claudin-3, please order Cat. No. 519000 (Rb x Claudin-1) instead.

Product Images For Claudin 1 Polyclonal Antibody (MH25)



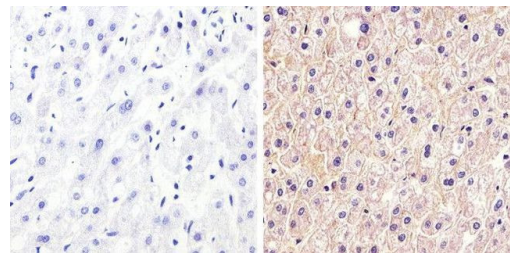
Claudin 1 Antibody (71-7800) in WB

Western blot analysis using Rabbit anti-Claudin-1 Polyclonal Antibody in: Lane 1: Rat liver. Lane 2: Rat kidney. Lane 3: MDCK cells. Lane 4: Caco-2 cells. Lane 5: Mouse hepatocytes (Product # 71-7800).



Claudin 1 Antibody (71-7800)

Antibody specificity was demonstrated by CRISPR-Cas9 mediated knockout of target protein. A loss of signal was observed for target protein in CLDN1 KO cell line compared to control cell line using Claudin 1 Polyclonal Antibody (MH25) (Product # 71-7800). {KO}



Claudin 1 Antibody (71-7800) in IHC (P)

Immunohistochemistry analysis of Claudin-1 showing staining in the membrane and weak cytoplasm staining of paraffin-embedded human liver tissue (right) compared to a negative control without primary antibody (left). To expose target proteins, antigen retrieval was performed using 10mM sodium citrate (pH 6.0), microwaved for 8-15 min. Following antigen retrieval, tissues were blocked in 3% H2O2-methanol for 15 min at room temperature, washed with ddH2O and PBS, and then probed with a Claudin-1 Rabbit Polyclonal Antibody (Product # 71-7800) diluted in 3% BSA-PBS at a dilution of 1:20 overnight at 4°C in a humidified chamber. Tissues were washed extensively in PBST and detection was performed using an HRP-conjugated secondary antibody followed by colorimetric detection using a DAB kit. Tissues were counterstained with hematoxylin and dehydrated with ethanol and xylene to prep for mounting.

View more figures on thermofisher.com

Western Blot (66)

<p>Evidence-based complementary and alternative medicine : eCAM</p> <p>Liangxue Tongyu Prescription Alleviates Brain Damage in Acute Intracerebral Hemorrhage Rats by Regulating Intestinal Mucosal Barrier Function.</p> <p>"71-7800 was used in Western Blotting to show that LTP can effectively reduce the degree of brain damage in AICH rats, and the mechanism may be that it can play a neuroprotective role by regulating the function of the intestinal mucosal barrier."</p> <p>Authors: Zhou Y,Zhang Z,Sun Y,Zhou D,Zhao Y,Li J,Guo W</p>	<p>Year 2023</p> <p>Species Rat</p> <p>Dilution 1:1000</p>
<p>Heliyon</p> <p>MiR-23b-3p suppresses epithelial-mesenchymal transition, migration, and invasion of hepatocellular carcinoma cells by targeting c-MET.</p> <p>"Published figure using Claudin 1 polyclonal antibody (Product # 71-7800) in Western Blot"</p> <p>Authors: Park NR,Cha JH,Sung PS,Jang JW,Choi JY,Yoon SK,Bae SH</p>	<p>Year 2022</p> <p>Species Human</p> <p>Dilution 1:1000</p>

View more WB references on thermofisher.com

Immunohistochemistry (34)

<p>Asian Pacific journal of allergy and immunology</p> <p>TMAO reductase, a biomarker for gut permeability defect induced inflammation, in mouse model of chronic kidney disease and dextran sulfate solution-induced mucositis.</p> <p>"71-7800 was used in Immunohistochemistry to show that serum TMAO reductase was elevated in CKD mice and patients with CKD."</p> <p>Authors: Boonhai S,Bootdee K,Saisorn W,Takkavatakarn K,Sitticharoenchai P,Tungsanga S,Tiranathanagul K,Leelahavanichkul A</p>	<p>Year 2023</p> <p>Species Mouse</p>
<p>American journal of medical genetics. Part A</p> <p>Autosomal recessive congenital ichthyosis caused by a pathogenic missense variant in CLDN1.</p> <p>"Published figure using Claudin 1 polyclonal antibody (Product # 71-7800) in Immunohistochemistry"</p> <p>Authors: Mohamad J,Samuelov L,Assaf S,Malki L,Malovitski K,Meijers O,Adir N,Granot E,Pavlovsky M,Sarig O,Sprecher E</p>	<p>Year 2022</p>

View more IHC references on thermofisher.com

More applications with references on thermofisher.com

- IHC (P) (5)
- IHC (F) (5)
- ICC/IF (41)
- IP (4)
- Misc (5)

For Research Use Only. Not for use in diagnostic procedures. Not for resale without express authorization. Products are warranted to operate or perform substantially in conformance with published Product specifications in effect at the time of sale, as set forth in the Production documentation, specifications and/or accompanying package inserts ("Documentation"). No claim of suitability for use in applications regulated by FDA is made. The warranty provided herein is valid only when used by properly trained individuals. Unless otherwise stated in the Documentation, this warranty is limited to one year from date of shipment when the Product is subjected to normal, proper and intended usage. This warranty does not extend to anyone other than the Buyer. Any model or sample furnished to Buyer is merely illustrative of the general type and quality of goods and does not represent that any Product will conform to such model or sample. NO OTHER WARRANTIES, EXPRESS OR IMPLIED, ARE GRANTED INCLUDING WITHOUT LIMITATION, IMPLIED WARRANTIES OF MERCHANTABILITY, FITNESS FOR ANY PARTICULAR PURPOSE, OR NON INFRINGEMENT. BUYER'S EXCLUSIVE REMEDY FOR NON-CONFORMING PRODUCTS DURING THE WARRANTY PERIOD IS LIMITED TO REPAIR, REPLACEMENT OF OR REFUND FOR THE NON-CONFORMING PRODUCT(S) AT SELLER'S SOLE OPTION. THERE IS NO OBLIGATION TO REPAIR, REPLACE OR REFUND FOR PRODUCTS AS THE RESULT OF (I) ACCIDENT, DISASTER OR EVENT OF FORCE MAJEURE, (II) MISUSE, FAULT OR NEGLIGENCE OF OR BY BUYER, (III) USE OF THE PRODUCTS IN A MANNER FOR WHICH THEY WERE NOT DESIGNED, OR (IV) IMPROPER STORAGE AND HANDLING OF THE PRODUCTS. Unless otherwise expressly stated on the Product or in the documentation accompanying the Product, the Product is intended for research only and is not to be used for any other purpose, including without limitation, unauthorized commercial uses, in vitro diagnostic uses, ex vivo or in vivo therapeutic uses, or any type of consumption by or application to human or animals.