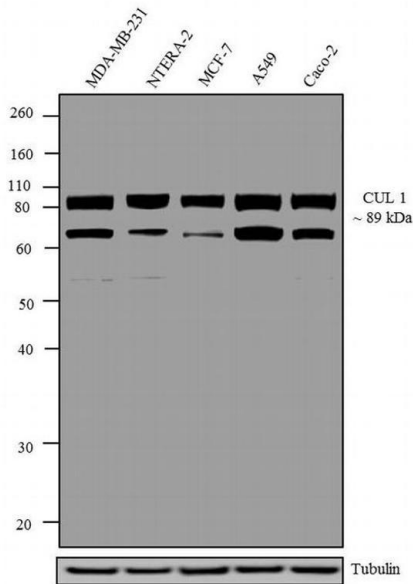


Cullin 1 Polyclonal Antibody

Product Details	
Size	100 µg
Species Reactivity	Human
Published Species	Fruit fly, Virus, Insect, Non-human primate, Human, Mouse
Host/Isotype	Rabbit / IgG
Class	Polyclonal
Type	Antibody
Conjugate	Unconjugated
Immunogen	An 11 amino acid synthetic peptide derived from the extreme C-terminus of the human CUL1 protein. This peptide sequence is identical to Drosophila CUL1 (LIN-19) in 9/11 positions and in 7/11 residues with the CUL1 C. elegans and Dictyostelium discoidium homologs
Form	Liquid
Concentration	0.25 mg/mL
Purification	Antigen affinity chromatography
Storage buffer	PBS, pH 7.4
Contains	0.1% sodium azide
Storage conditions	-20°C
RRID	AB_2534002

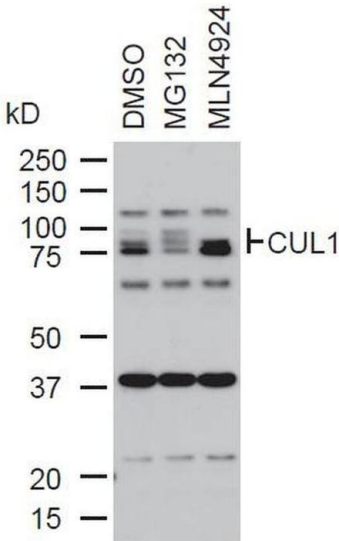
Applications	Tested Dilution	Publications
Western Blot (WB)	1-2 µg/mL	38 Publications
Immunohistochemistry (IHC)	-	4 Publications
Flow Cytometry (Flow)	-	1 Publication
ELISA (ELISA)	Assay-dependent	-
Immunoprecipitation (IP)	Assay-dependent	7 Publications
Miscellaneous PubMed (Misc)	-	1 Publication

Product Images For Cullin 1 Polyclonal Antibody



Cullin 1 Antibody (71-8700) in WB

Western blot analysis was performed on whole cell extracts (30 µg lysate) of MDA-MB-231 (Lane 1), NTERA-2 (Lane 2), MCF-7 (Lane 3), A549 (Lane 4), and Caco-2 (Lane 5). The blots were probed with Anti- CUL1 Rabbit Polyclonal Antibody (Product # 71-8700, 1-2 µg/mL) and detected by chemiluminescence using Goat anti-Rabbit IgG (Heavy Chain) Superclonal™ Secondary Antibody, HRP conjugate (Product # A27036, 0.4 µg/mL, 1:2500 dilution). A ~ 89 kDa band corresponding to CUL1 was observed across cell lines tested. Additionally ~68 kDa band was observed across cell lines tested. Known quantity of protein samples were electrophoresed using Novex® NuPAGE® 10 % Bis-Tris gel (Product # NP0302BOX), XCell SureLock™ Electrophoresis System (Product # EI0002) and Novex® Sharp Pre-Stained Protein Standard (Product # LC5800). Resolved proteins were then transferred onto a nitrocellulose membrane with Pierce™ Power Blotter System (Product # 22834). The membrane was probed with the relevant primary and secondary Antibody following blocking with 5 % skimmed milk. Chemiluminescent detection was performed using Pierce™ ECL Western Blotting Substrate (Product # 32106).



Cullin 1 Antibody (71-8700) in WB

Western blot analysis of Cullin-1 was performed by loading 10 µg of whole cell lysates from DMSO, MG132 or MLN4924 treated U2OS cells onto a SDS PAGE gel. Proteins were transferred, blocked and endogenous Cullin-1 was detected using a CUL-1 polyclonal antibody (Product # 71-8700) at a dilution of 1:1000.

View more figures on thermofisher.com

Western Blot (38)

<p>Cell reports</p> <p>Palmitoylation and PDE6 regulate membrane-compartment-specific substrate ubiquitylation and degradation.</p> <p>"Published figure using Cullin 1 polyclonal antibody (Product # 71-8700) in Western Blot"</p> <p>Authors: Liang D,Jiang L,Bhat SA,Missiroli S,Perrone M,Lauriola A,Adhikari R,Gudur A,Vasi Z,Ahearn I,Guardavaccaro D,Giorgi C,Philips M,Kuchay S</p>	<p>Year</p> <p>2023</p>
<p>PLoS pathogens</p> <p>Entamoeba histolytica activation of caspase-1 degrades cullin that attenuates NF-B dependent signaling from macrophages.</p> <p>"Published figure using Cullin 1 polyclonal antibody (Product # 71-8700) in Immunoprecipitation"</p> <p>Authors: Chadha A,Moreau F,Wang S,Dufour A,Chadee K</p>	<p>Year</p> <p>2021</p>

View more WB references on thermofisher.com

Immunohistochemistry (4)

<p>Nature communications</p> <p>Partial proteasomal degradation of Lola triggers the male-to-female switch of a dimorphic courtship circuit.</p> <p>"71-8700 was used in Immunohistochemistry to demonstrate that partial proteasomal degradation of Lola triggers the male-to-female switch of a dimorphic courtship circuit in Drosophila."</p> <p>Authors: Sato K,Ito H,Yokoyama A,Toba G,Yamamoto D</p>	<p>Year</p> <p>2019</p> <p>Species</p> <p>Fruit fly</p> <p>Dilution</p> <p>1:100</p>
<p>Nature communications</p> <p>CSN6 drives carcinogenesis by positively regulating Myc stability.</p> <p>"Published figure using Cullin 1 polyclonal antibody (Product # 71-8700) in Immunoprecipitation"</p> <p>Authors: Chen J,Shin JH,Zhao R,Phan L,Wang H,Xue Y,Post SM,Ho Choi H,Chen JS,Wang E,Zhou Z,Tseng C,Gully C, Velazquez-Torres G,Fuentes-Mattei E,Yeung G,Qiao Y,Chou PC,Su CH,Hsieh YC,Hsu SL,Ohshiro K,Shaikenov T, Wang H,Yeung SC,Lee MH</p>	<p>Year</p> <p>2014</p> <p>Species</p> <p>Human Mouse</p>

View more IHC references on thermofisher.com

More applications with references on thermofisher.com

- Flow (1)
- IP (7)
- Misc (1)

For Research Use Only. Not for use in diagnostic procedures. Not for resale without express authorization. Products are warranted to operate or perform substantially in conformance with published Product specifications in effect at the time of sale, as set forth in the Production documentation, specifications and/or accompanying package inserts ("Documentation"). No claim of suitability for use in applications regulated by FDA is made. The warranty provided herein is valid only when used by properly trained individuals. Unless otherwise stated in the Documentation, this warranty is limited to one year from date of shipment when the Product is subjected to normal, proper and intended usage. This warranty does not extend to anyone other than the Buyer. Any model or sample furnished to Buyer is merely illustrative of the general type and quality of goods and does not represent that any Product will conform to such model or sample. NO OTHER WARRANTIES, EXPRESS OR IMPLIED, ARE GRANTED INCLUDING WITHOUT LIMITATION, IMPLIED WARRANTIES OF MERCHANTABILITY, FITNESS FOR ANY PARTICULAR PURPOSE, OR NON-INFRINGEMENT. BUYER'S EXCLUSIVE REMEDY FOR NON-CONFORMING PRODUCTS DURING THE WARRANTY PERIOD IS LIMITED TO REPAIR, REPLACEMENT OF OR REFUND FOR THE NON-CONFORMING PRODUCT(S) AT SELLER'S SOLE OPTION. THERE IS NO OBLIGATION TO REPAIR, REPLACE OR REFUND FOR PRODUCTS AS THE RESULT OF (i) ACCIDENT, DISASTER OR EVENT OF FORCE MAJEURE, (ii) MISUSE, FAULT OR NEGLIGENCE OF OR BY BUYER, (iii) USE OF THE PRODUCTS IN A MANNER FOR WHICH THEY WERE NOT DESIGNED, OR (iv) IMPROPER STORAGE AND HANDLING OF THE PRODUCTS. Unless otherwise expressly stated on the Product or in the documentation accompanying the Product, the Product is intended for research only and is not to be used for any other purpose, including without limitation, unauthorized commercial uses, in vitro diagnostic uses, ex vivo or in vivo therapeutic uses, or any type of consumption by or application to human or animals.