

STAT1 Recombinant Polyclonal Antibody (4HCLC)

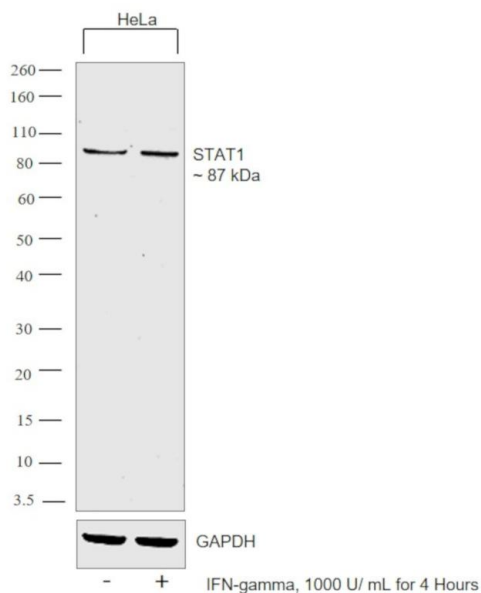
Product Details	
Size	100 µg
Species Reactivity	Human
Host/Isotype	Rabbit / IgG
Expression system	Expi293
Class	Recombinant Polyclonal
Type	Antibody
Clone	4HCLC
Conjugate	Unconjugated
Immunogen	Recombinant protein corresponding to amino acids 134-218 of human STAT1
Form	Liquid
Concentration	0.5 mg/mL
Purification	Protein A
Storage buffer	PBS
Contains	0.09% sodium azide
Storage conditions	Store at 4°C short term. For long term storage, store at -20°C, avoiding freeze/thaw cycles.
RRID	AB_2532547

Applications	Tested Dilution	Publications
Western Blot (WB)	0.5-1 µg/mL	-
Immunocytochemistry (ICC/IF)	2-4 µg	-
ELISA (ELISA)	Assay-Dependent	-
ChIP assay (ChIP)	3 µg	-

Product Specific Information

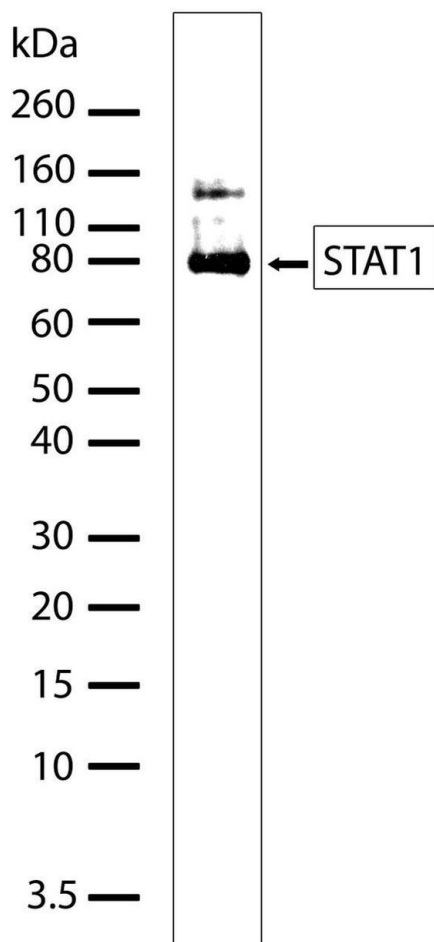
Recombinant rabbit polyclonal antibodies are unique offerings from Thermo Fisher Scientific. They are comprised of a selection of multiple different recombinant monoclonal antibodies, providing the best of both worlds - the sensitivity of polyclonal antibodies with the specificity of monoclonal antibodies - all delivered with the consistency only found in a recombinant antibody. While functionally the same as a polyclonal antibody - recognizing multiple epitope sites on the target and producing higher detection sensitivity for low abundance targets - a recombinant rabbit polyclonal antibody has a known mixture of light and heavy chains. The exact population can be produced in every lot, circumventing the biological variability typically associated with polyclonal antibody production.

Product Images For STAT1 Recombinant Polyclonal Antibody (4HCLC)



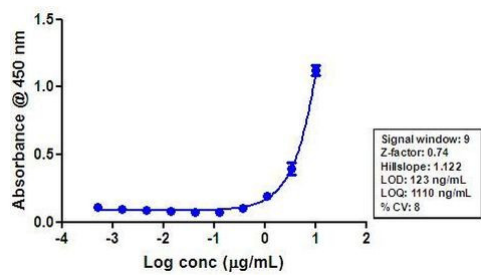
STAT1 Antibody (710078) in WB

Western blot was performed using Anti-STAT1 Recombinant Rabbit Polyclonal Antibody (Product # 710078) and a 87 kDa band corresponding to STAT1 was observed in HeLa cells upon IFN gamma treatment. Whole cell extracts (30 µg lysate) of HeLa (Lane 1), HeLa treated with IFN-gamma (1000u/mL for 4 Hours) (Lane 2) were electrophoresed using Novex® NuPAGE® 4-12 % Bis-Tris gel (Product # NP0322BOX). Resolved proteins were then transferred onto a nitrocellulose membrane (Product # IB23001) by iBlot® 2 Dry Blotting System (Product # IB21001). The blots were probed with the primary antibody (0.5 µg/mL) and detected by chemiluminescence Goat anti-Rabbit IgG Secondary Antibody, HRP conjugate (Product # A27036, 1:4000 dilution) using the iBright FL 1000 (Product # A32752). Chemiluminescent detection was performed using Novex® ECL Chemiluminescent Substrate Reagent Kit (Product # WP20005).



STAT1 Antibody (710078) in WB

Western blot analysis of STAT1 in whole cell extract (40 µg) from HeLa cells treated with IFN1a (150 ng/mL, 15 min) using STAT1 Antibody (4HCLC) Recombinant Rabbit Polyclonal (Product # 710078) at a dilution of 5 µg/mL. Detection was performed using an HRP-conjugated Goat anti-Rabbit secondary antibody at a dilution of 1:5000 followed by chemiluminescence (ECL). Results show a band at ~84kDa.



STAT1 Antibody (710078) in ELISA

Indirect ELISA analysis of endogenous STAT1 in HeLa cells treated with IFN1a (150 ng/mL for 15 min) and whole cell lysate (1 µg/well) using STAT1 Antibody (4HCLC) Recombinant Rabbit Polyclonal (Product # 710078) followed by detection using an HRP-conjugated Goat anti-Rabbit secondary antibody (Product # G-21234) and TMB (Product # SB01) as a substrate.

For Research Use Only. Not for use in diagnostic procedures. Not for resale without express authorization. Products are warranted to operate or perform substantially in conformance with published Product specifications in effect at the time of sale, as set forth in the Production documentation, specifications and/or accompanying package inserts ("Documentation"). No claim of suitability for use in applications regulated by FDA is made. The warranty provided herein is valid only when used by properly trained individuals. Unless otherwise stated in the Documentation, this warranty is limited to one year from date of shipment when the Product is subjected to normal, proper and intended usage. This warranty does not extend to anyone other than the Buyer. Any model or sample furnished to Buyer is merely illustrative of the general type and quality of goods and does not represent that any Product will conform to such model or sample. NO OTHER WARRANTIES, EXPRESS OR IMPLIED, ARE GRANTED INCLUDING WITHOUT LIMITATION, IMPLIED WARRANTIES OF MERCHANTABILITY, FITNESS FOR ANY PARTICULAR PURPOSE, OR NON-INFRINGEMENT. BUYER'S EXCLUSIVE REMEDY FOR NON-CONFORMING PRODUCTS DURING THE WARRANTY PERIOD IS LIMITED TO REPAIR, REPLACEMENT OF OR REFUND FOR THE NON-CONFORMING PRODUCT(S) AT SELLER'S SOLE OPTION. THERE IS NO OBLIGATION TO REPAIR, REPLACE OR REFUND FOR PRODUCTS AS THE RESULT OF (I) ACCIDENT, DISASTER OR EVENT OF FORCE MAJEURE, (II) MISUSE, FAULT OR NEGLIGENCE OF OR BY BUYER, (III) USE OF THE PRODUCTS IN A MANNER FOR WHICH THEY WERE NOT DESIGNED, OR (IV) IMPROPER STORAGE AND HANDLING OF THE PRODUCTS. Unless otherwise expressly stated on the Product or in the documentation accompanying the Product, the Product is intended for research only and is not to be used for any other purpose, including without limitation, unauthorized commercial uses, in vitro diagnostic uses, ex vivo or in vivo therapeutic uses, or any type of consumption by or application to human or animals.