

# Phospho-p70 S6 Kinase (Thr389) Recombinant Polyclonal Antibody (B2HCLC)

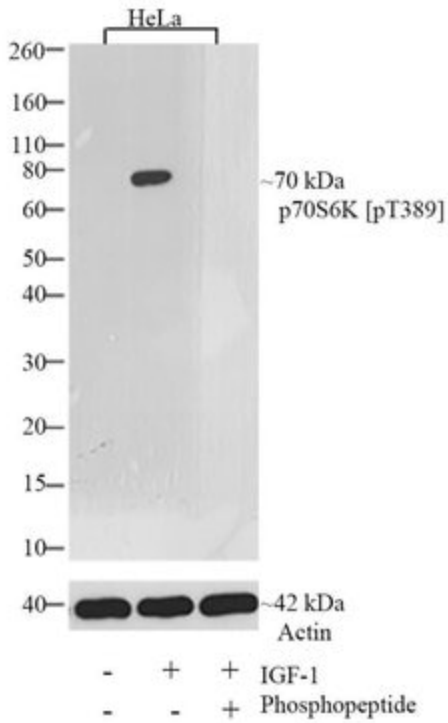
Product Details	
Size	100 µg
Species Reactivity	Human, Rat
Published Species	Human
Host/Isotype	Rabbit / IgG
Class	Recombinant Polyclonal
Type	Antibody
Clone	B2HCLC
Conjugate	Unconjugated
Immunogen	Phosphopeptide corresponding to amino acids 384–394 of human p70 ribosomal protein S6 kinase
Form	Liquid
Concentration	0.5 mg/mL
Purification	Protein A
Storage buffer	PBS
Contains	0.09% sodium azide
Storage Conditions	Store at 4°C short term. For long term storage, store at -20°C, avoiding freeze/thaw cycles.
RRID	AB_2532559

Applications	Tested Dilution	Publications
Western Blot (WB)	1:500-1:5000	3 Publications
Immunocytochemistry (ICC)	1:100-1:1000	-
Immunofluorescence (IF)	1:100-1:1000	-
ChIP assay (ChIP)	1 µL	-

## Product Specific Information

Recombinant rabbit polyclonal antibodies are unique offerings from Thermo Fisher Scientific. They are comprised of a selection of multiple different recombinant monoclonal antibodies, providing the best of both worlds - the sensitivity of polyclonal antibodies with the specificity of monoclonal antibodies - all delivered with the consistency only found in a recombinant antibody. While functionally the same as a polyclonal antibody - recognizing multiple epitope sites on the target and producing higher detection sensitivity for low abundance targets - a recombinant rabbit polyclonal antibody has a known mixture of light and heavy chains. The exact population can be produced in every lot, circumventing the biological variability typically associated with polyclonal antibody production.

## Advanced Verification Data



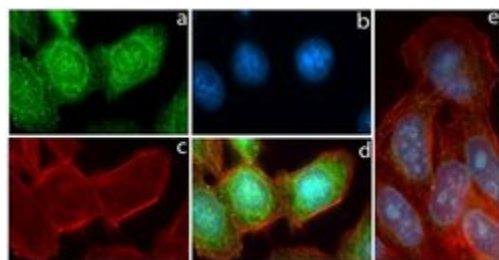
### Phospho-p70 S6 Kinase (Thr389) Antibody (710095)

Modulation of expression of target protein by cell treatment to demonstrate antibody specificity. Western blotting analysis of p70S6K (pT389) using p70S6K (pT389) Recombinant Rabbit Polyclonal Antibody (Product # 710095) shows induction of p70S6K (pT389) in IGF1 treated HeLa cells. Cell treatment validation info.

## Product Images For Phospho-p70 S6 Kinase (Thr389) Recombinant Polyclonal Antibody (B2HCLC)

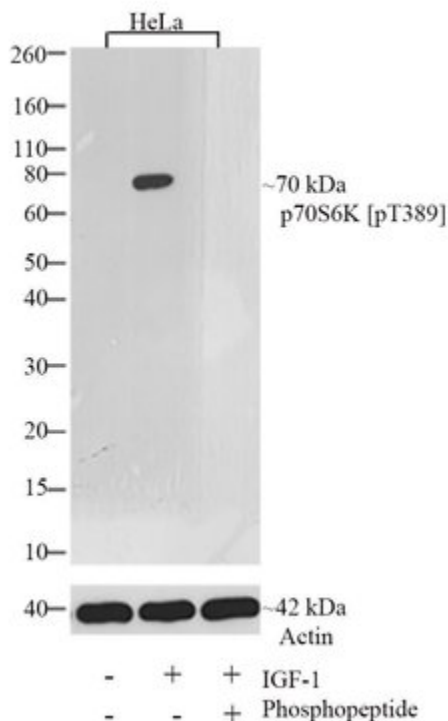
### Phospho-p70 S6 Kinase (Thr389) Antibody (710095) in IF

Immunofluorescent analysis of p70S6K (pT389) was performed on 70% confluent log phase HeLa cells. The cells were fixed with 4% paraformaldehyde for 15 minutes, permeabilized with 0.25% Triton X-100 for 10 minutes, and blocked with 5% BSA for 1 hour at room temperature. The cells were labeled with p70S6K (pT389) Recombinant Rabbit Polyclonal Antibody (Product # 710095) at a dilution of 1:500 in 1% BSA and incubated for 3 hours at room temperature and then labeled with Alexa Fluor® 488 Goat anti-Rabbit IgG secondary antibody (Product # A-11008) at a dilution of 1:400 for 30 minutes at room temperature (Panel a: green). Nuclei (Panel b: blue) were stained with SlowFade® Gold Antifade Mountant with DAPI (Product # S36938). F-actin (Panel c: red) was stained with Alexa Fluor® 594 phalloidin (Product # A12381). Panel d is a merged image showing cytoplasmic and nuclear localization. Panel e shows competition with p70S6K (pT389) peptide. The images were captured using a Nikon microscope at 20X magnification.



### Phospho-p70 S6 Kinase (Thr389) Antibody (710095) in WB

Western blot analysis of p70S6K (pT389) was performed by loading 20 µg of untreated HeLa cells (lane 1) and HeLa treated with IGF-1 lysates (lane 2) using Novex® NuPAGE® 4-12% Bis-Tris gel (Product # NP0321BOX), XCell SureLock Electrophoresis System (Product # EI0002), and Novex® Sharp Pre-Stained Protein Standard (Product # LC5800). Proteins were transferred to a PVDF membrane and blocked with 5% skim milk for 1 hour at room temperature. p70S6K (pT389) was detected at ~70 kDa using p70S6K (pT389) Recombinant Rabbit Polyclonal Antibody (Product # 710095) at a 1:1000 dilution in 2.5% skim milk at 4°C overnight on a rocking platform. To confirm specificity, competition was performed with the phosphopeptide (10 µg/mL) (lane 3). Detection was performed using an HRP-conjugated Goat anti-Rabbit secondary antibody (Product # G-21234) at a 1:5000 dilution and chemiluminescent detection was performed using Pierce™ ECL Western blotting Substrate (Product # 32106).



[View more figures on thermofisher.com](https://www.thermofisher.com)

## Western Blot (3)

Frontiers in immunology

### Mechanisms of Trained Innate Immunity in oxLDL Primed Human Coronary Smooth Muscle Cells.

"710095 was used in Western Blotting to investigate whether the mechanisms of trained innate immunity also control a proinflammatory phenotype in human coronary smooth muscle cells."

Authors: Schnack L, Sohrabi Y, Lagache SMM, Kahles F, Bruemmer D, Waltenberger J, Findeisen HM

**Species**  
Human

**Dilution**  
Not Cited

**Year**  
2019

Frontiers in immunology

### mTOR-Dependent Oxidative Stress Regulates oxLDL-Induced Trained Innate Immunity in Human Monocytes.

"710095 was used in Western Blotting to analyse the role of reactive oxygen species in regulating proinflammatory monocyte priming in response to oxidised low-density lipoprotein-treatment."

Authors: Sohrabi Y, Lagache SMM, Schnack L, Godfrey R, Kahles F, Bruemmer D, Waltenberger J, Findeisen HM

**Species**  
Human

**Dilution**  
Not Cited

**Year**  
2019

[View more WB references on thermofisher.com](#)

For Research Use Only. Not for use in diagnostic procedures. Not for resale without express authorization. Products are warranted to operate or perform substantially in conformance with published Product specifications in effect at the time of sale, as set forth in the Production documentation, specifications and/or accompanying package inserts ("Documentation"). No claim of suitability for use in applications regulated by FDA is made. The warranty provided herein is valid only when used by properly trained individuals. Unless otherwise stated in the Documentation, this warranty is limited to one year from date of shipment when the Product is subjected to normal, proper and intended usage. This warranty does not extend to anyone other than the Buyer. Any model or sample furnished to Buyer is merely illustrative of the general type and quality of goods and does not represent that any Product will conform to such model or sample. NO OTHER WARRANTIES, EXPRESS OR IMPLIED, ARE GRANTED INCLUDING WITHOUT LIMITATION, IMPLIED WARRANTIES OF MERCHANTABILITY, FITNESS FOR ANY PARTICULAR PURPOSE, OR NON INFRINGEMENT. BUYER'S EXCLUSIVE REMEDY FOR NON-CONFORMING PRODUCTS DURING THE WARRANTY PERIOD IS LIMITED TO REPAIR, REPLACEMENT OF OR REFUND FOR THE NON-CONFORMING PRODUCT(S) AT SELLER'S SOLE OPTION. THERE IS NO OBLIGATION TO REPAIR, REPLACE OR REFUND FOR PRODUCTS AS THE RESULT OF (I) ACCIDENT, DISASTER OR EVENT OF FORCE MAJEURE, (II) MISUSE, FAULT OR NEGLIGENCE OF OR BY BUYER, (III) USE OF THE PRODUCTS IN A MANNER FOR WHICH THEY WERE NOT DESIGNED, OR (IV) IMPROPER STORAGE AND HANDLING OF THE PRODUCTS. Unless otherwise expressly stated on the Product or in the documentation accompanying the Product, the Product is intended for research only and is not to be used for any other purpose, including without limitation, unauthorized commercial uses, in vitro diagnostic uses, ex vivo or in vivo therapeutic uses, or any type of consumption by or application to human or animals.