

Occludin Recombinant Polyclonal Antibody (6HCLC)

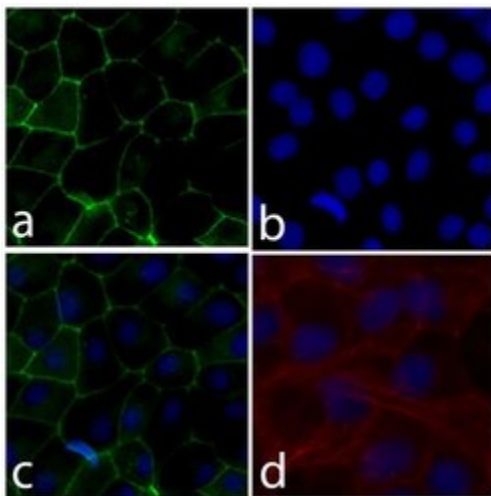
Product Details	
Size	100 µg
Species Reactivity	Human, Mouse
Published Species	Mouse, Human
Host/Isotype	Rabbit / IgG
Class	Recombinant Polyclonal
Type	Antibody
Clone	6HCLC
Conjugate	Unconjugated
Immunogen	Peptide corresponding to amino acids 387-403 of human occludin
Form	Liquid
Concentration	0.5 mg/mL
Purification	Protein A
Storage buffer	PBS
Contains	0.09% sodium azide
Storage conditions	Store at 4°C short term. For long term storage, store at -20°C, avoiding freeze/thaw cycles.
RRID	AB_2532617

Applications	Tested Dilution	Publications
Western Blot (WB)	1:500-1:5,000	4 Publications
Immunohistochemistry (Paraffin) (IHC (P))	1:10-1:100	-
Immunocytochemistry (ICC/IF)	1:100-1:1,000	-

Product Specific Information

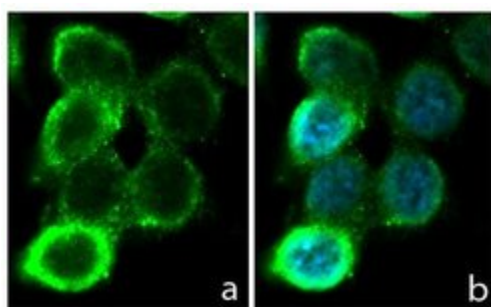
Recombinant rabbit polyclonal antibodies are unique offerings from Thermo Fisher Scientific. They are comprised of a selection of multiple different recombinant monoclonal antibodies, providing the best of both worlds - the sensitivity of polyclonal antibodies with the specificity of monoclonal antibodies - all delivered with the consistency only found in a recombinant antibody. While functionally the same as a polyclonal antibody - recognizing multiple epitope sites on the target and producing higher detection sensitivity for low abundance targets - a recombinant rabbit polyclonal antibody has a known mixture of light and heavy chains. The exact population can be produced in every lot, circumventing the biological variability typically associated with polyclonal antibody production.

Product Images For Occludin Recombinant Polyclonal Antibody (6HCLC)



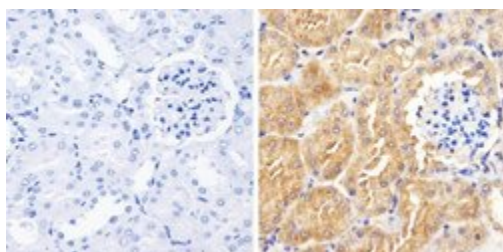
Occludin Antibody (710192) in ICC/IF

Immunofluorescent analysis of Occludin was performed on 90% confluent log phase Caco-2 cells. The cells were fixed with 4% paraformaldehyde for 15 minutes, and blocked with 5% BSA for 1 hour at room temperature. The cells were labeled with Occludin Recombinant Rabbit Polyclonal Antibody (Product # 710192) at a dilution of 1:500 in 1% BSA and incubated for 3 hours at room temperature and then labeled with Alexa Fluor® 488 Goat anti-Rabbit IgG secondary antibody (Product # A-11008) at a dilution of 1:400 for 30 minutes at room temperature (Panel a: green). Nuclei (Panel b: blue) were stained with SlowFade® Gold Antifade Mountant with DAPI (Product # S36938). Panel c is a merged image showing cell junction localization and panel d is a control without primary antibody. The images were captured using a Nikon microscope at 20X magnification.



Occludin Antibody (710192) in ICC/IF

Immunofluorescent analysis of Occludin in HEK293 cells using an Occludin Recombinant Rabbit Polyclonal Antibody (Product # 710192) followed by detection using an Alexa Fluor 488-conjugated Goat anti-Rabbit secondary antibody (green) and nuclei stained using DAPI (blue) (image A). Image B is a composite image showing localization of Occludin at tight junctions.



Occludin Antibody (710192) in IHC (P)

Immunohistochemistry analysis of Occludin showing staining in the cytoplasm of paraffin-embedded mouse kidney tissue (right) compared to a negative control without primary antibody (left). To expose target proteins, antigen retrieval was performed using 10 mM sodium citrate (pH 6.0), microwaved for 8-15 min. Following antigen retrieval, tissues were blocked in 3% H₂O₂-methanol for 15 min at room temperature, washed with ddH₂O and PBS, and then probed with a Occludin (6H10L9) Recombinant Rabbit Polyclonal Antibody (Product # 710192) diluted in 3% BSA-PBS at a dilution of 1:20 overnight at 4°C in a humidified chamber. Tissues were washed extensively in PBST and detection was performed using a HRP-conjugated secondary antibody followed by colorimetric detection using a DAB kit. Tissues were counterstained with hematoxylin and dehydrated with ethanol and xylene to prep for mounting.

[View more figures on thermofisher.com](https://www.thermofisher.com)

Western Blot (4)

Acta pharmaceutica Sinica. B

TIMP1 preserves the blood-brain barrier through interacting with CD63 /integrin 1 complex and regulating downstream FAK/RhoA signaling.

"710192 was used in Western Blotting to explore the neuroprotective role of TIMP1 in mice with experimental brain injury."

Authors: Tang J,Kang Y,Huang L,Wu L,Peng Y

Species
Mouse

Dilution
Not Cited

Year
2020

Experimental neurology

-Synuclein pre-formed fibrils impair tight junction protein expression without affecting cerebral endothelial cell function.

"710192 was used in western blot to test if alpha-synuclein preformed fibrils alter endothelial function"

Authors: Kuan WL,Bennett N,He X,Skepper JN,Martynyuk N,Wijeyekoon R,Moghe PV,Williams-Gray CH,Barker RA

Species
Human

Dilution
1:1000

Year
2016

[View more WB references on thermofisher.com](#)

For Research Use Only. Not for use in diagnostic procedures. Not for resale without express authorization. Products are warranted to operate or perform substantially in conformance with published Product specifications in effect at the time of sale, as set forth in the Production documentation, specifications and/or accompanying package inserts ("Documentation"). No claim of suitability for use in applications regulated by FDA is made. The warranty provided herein is valid only when used by properly trained individuals. Unless otherwise stated in the Documentation, this warranty is limited to one year from date of shipment when the Product is subjected to normal, proper and intended usage. This warranty does not extend to anyone other than the Buyer. Any model or sample furnished to Buyer is merely illustrative of the general type and quality of goods and does not represent that any Product will conform to such model or sample. NO OTHER WARRANTIES, EXPRESS OR IMPLIED, ARE GRANTED INCLUDING WITHOUT LIMITATION, IMPLIED WARRANTIES OF MERCHANTABILITY, FITNESS FOR ANY PARTICULAR PURPOSE, OR NON INFRINGEMENT. BUYER'S EXCLUSIVE REMEDY FOR NON-CONFORMING PRODUCTS DURING THE WARRANTY PERIOD IS LIMITED TO REPAIR, REPLACEMENT OF OR REFUND FOR THE NON-CONFORMING PRODUCT(S) AT SELLER'S SOLE OPTION. THERE IS NO OBLIGATION TO REPAIR, REPLACE OR REFUND FOR PRODUCTS AS THE RESULT OF (I) ACCIDENT, DISASTER OR EVENT OF FORCE MAJEURE, (II) MISUSE, FAULT OR NEGLIGENCE OF OR BY BUYER, (III) USE OF THE PRODUCTS IN A MANNER FOR WHICH THEY WERE NOT DESIGNED, OR (IV) IMPROPER STORAGE AND HANDLING OF THE PRODUCTS. Unless otherwise expressly stated on the Product or in the documentation accompanying the Product, the Product is intended for research only and is not to be used for any other purpose, including without limitation, unauthorized commercial uses, in vitro diagnostic uses, ex vivo or in vivo therapeutic uses, or any type of consumption by or application to human or animals.