

TPL2 Recombinant Polyclonal Antibody (3HCLC)

Product Details

Size	100 µg
Species Reactivity	Human, Mouse
Published Species	Mouse
Host/Isotype	Rabbit / IgG
Expression system	Expi293
Class	Recombinant Polyclonal
Type	Antibody
Clone	3HCLC
Conjugate	Unconjugated
Immunogen	Peptide corresponding to amino acids 282-293 of human COT/TPL2/MAP3K8
Form	Liquid
Concentration	0.5 mg/mL
Purification	Protein A
Storage buffer	PBS
Contains	0.09% sodium azide
Storage conditions	Store at 4°C short term. For long term storage, store at -20°C, avoiding freeze/thaw cycles.
RRID	AB_2532699

Applications	Tested Dilution	Publications
Western Blot (WB)	2-3 µg/mL	1 Publication
Immunocytochemistry (ICC/IF)	2-3 µg/mL	-

Product Specific Information

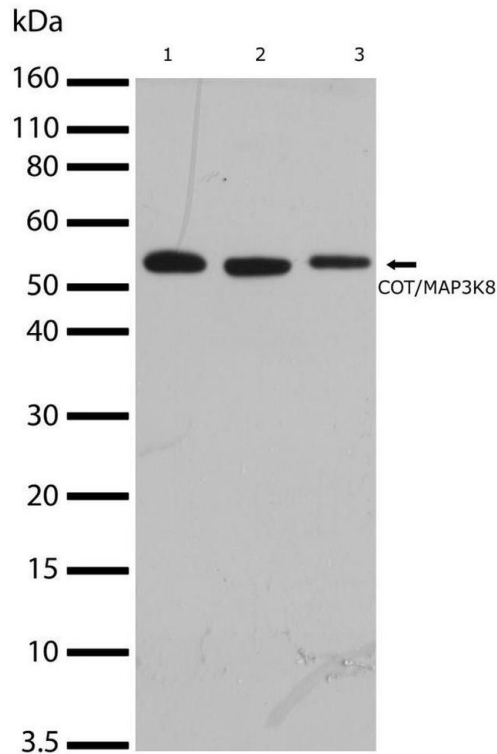
This antibody is predicted to react with bovine, canine, equine, mouse, rabbit and rat based on sequence homology.

Recombinant rabbit polyclonal antibodies are unique offerings from Thermo Fisher Scientific. They are comprised of a selection of multiple different recombinant monoclonal antibodies, providing the best of both worlds - the sensitivity of polyclonal antibodies with the specificity of monoclonal antibodies - all delivered with the consistency only found in a recombinant antibody. While functionally the same as a polyclonal antibody - recognizing multiple epitope sites on the target and producing higher detection sensitivity for low abundance targets - a recombinant rabbit polyclonal antibody has a known mixture of light and heavy chains. The exact population can be produced in every lot, circumventing the biological variability typically associated with polyclonal antibody production.

Product Images For TPL2 Recombinant Polyclonal Antibody (3HCLC)

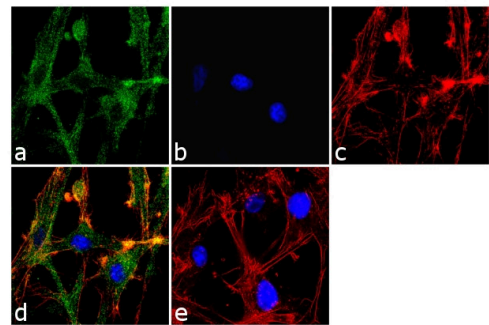
TPL2 Antibody (710377) in WB

Western blot analysis of TPL2 in whole cell extracts from Jurkat cells (lane 1), 3T3L1 cells (lane 2), and HepG2 cells (lane 3) using a TPL2 Recombinant Rabbit Polyclonal Antibody (Product # 710377) at a dilution of 2 µg/mL. Samples were detected using chemiluminescence (ECL). Results show a band at ~52kDa.



TPL2 Antibody (710377) in ICC/IF

Immunofluorescence analysis of COT/TPL2/MAP3K8 was done on 70% confluent log phase U-87MG cells. The cells were fixed with 4% paraformaldehyde for 10 minutes, permeabilized with 0.1% Triton™ X-100 for 10 minutes, and blocked with 1% BSA for 1 hour at room temperature. The cells were labeled with COT/TPL2/MAP3K8 (3HCLC), Recombinant Rabbit Polyclonal Antibody (Product # 710377) at 2 µg/mL in 0.1% BSA and incubated for 3 hours at room temperature and then labeled with Goat anti-Rabbit IgG (Heavy Chain) Superclonal™ Secondary Antibody, Alexa Fluor® 488 conjugate (Product # A27034) at a dilution of 1:2000 for 45 minutes at room temperature (Panel a: green). Nuclei (Panel b: blue) were stained with SlowFade® Gold Antifade Mountant with DAPI (Product # S36938). F-actin (Panel c: red) was stained with Alexa Fluor® 555 Rhodamine Phalloidin (Product # R415, 1:300). Panel d is a merged image showing cytoplasmic localization. Panel e is a no primary antibody control. The images were captured at 60X magnification.



Western Blot (1)

Cell reports	Year 2018
Janus Kinase 1 Plays a Critical Role in Mammary Cancer Progression.	Species Mouse
"710377 was used in Western Blotting to determine the role of Janus kinases in IL-6 cytokine signalling in metastatic cancer."	
Authors: Wehde BL,Rädler PD,Shrestha H,Johnson SJ,Triplett AA,Wagner KU	

For Research Use Only. Not for use in diagnostic procedures. Not for resale without express authorization. Products are warranted to operate or perform substantially in conformance with published Product specifications in effect at the time of sale, as set forth in the Production documentation, specifications and/or accompanying package inserts ("Documentation"). No claim of suitability for use in applications regulated by FDA is made. The warranty provided herein is valid only when used by properly trained individuals. Unless otherwise stated in the Documentation, this warranty is limited to one year from date of shipment when the Product is subjected to normal, proper and intended usage. This warranty does not extend to anyone other than the Buyer. Any model or sample furnished to Buyer is merely illustrative of the general type and quality of goods and does not represent that any Product will conform to such model or sample. NO OTHER WARRANTIES, EXPRESS OR IMPLIED, ARE GRANTED INCLUDING WITHOUT LIMITATION, IMPLIED WARRANTIES OF MERCHANTABILITY, FITNESS FOR ANY PARTICULAR PURPOSE, OR NON INFRINGEMENT. BUYER'S EXCLUSIVE REMEDY FOR NON-CONFORMING PRODUCTS DURING THE WARRANTY PERIOD IS LIMITED TO REPAIR, REPLACEMENT OF OR REFUND FOR THE NON-CONFORMING PRODUCT(S) AT SELLER'S SOLE OPTION. THERE IS NO OBLIGATION TO REPAIR, REPLACE OR REFUND FOR PRODUCTS AS THE RESULT OF (I) ACCIDENT, DISASTER OR EVENT OF FORCE MAJEURE, (II) MISUSE, FAULT OR NEGLIGENCE OF OR BY BUYER, (III) USE OF THE PRODUCTS IN A MANNER FOR WHICH THEY WERE NOT DESIGNED, OR (IV) IMPROPER STORAGE AND HANDLING OF THE PRODUCTS. Unless otherwise expressly stated on the Product or in the documentation accompanying the Product, the Product is intended for research only and is not to be used for any other purpose, including without limitation, unauthorized commercial uses, in vitro diagnostic uses, ex vivo or in vivo therapeutic uses, or any type of consumption by or application to human or animals.