

# Connexin 36 Recombinant Polyclonal Antibody (12HCLC)

## Product Details

Size	100 µg
Species Reactivity	Human, Rat
Host/Isotope	Rabbit / IgG
Class	Recombinant Polyclonal
Type	Antibody
Clone	12HCLC
Conjugate	Unconjugated
Immunogen	Peptides corresponding to Human GJD2 (aa 288-304, 304-319)
Form	Liquid
Concentration	0.5 mg/mL
Purification	Protein A
Storage buffer	PBS, pH 7.2
Contains	0.09% sodium azide
Storage Conditions	Store at 4°C short term. For long term storage, store at -20°C, avoiding freeze/thaw cycles.
RRID	AB_2576616

Applications	Tested Dilution	Publications
Immunocytochemistry (ICC)	2 µg/mL	-
Immunofluorescence (IF)	2 µg/mL	-
Western Blot (WB)	1-2 µg/mL	-

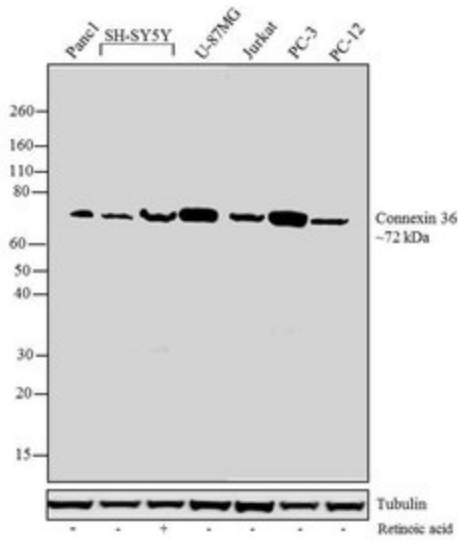
## Product Specific Information

This antibody is predicted to react with Monkey, Pig, Goat and Rabbit. Recombinant rabbit polyclonal antibodies are unique offerings from Thermo Fisher Scientific. They are comprised of a selection of multiple different recombinant monoclonal antibodies, providing the best of both worlds - the sensitivity of polyclonal antibodies with the specificity of monoclonal antibodies - all delivered with the consistency only found in a recombinant antibody. While functionally the same as a polyclonal antibody - recognizing multiple epitope sites on the target and producing higher detection sensitivity for low abundance targets - a recombinant rabbit polyclonal antibody has a known mixture of light and heavy chains. The exact population can be produced in every lot, circumventing the biological variability typically associated with polyclonal antibody production.

## Advanced Verification Data

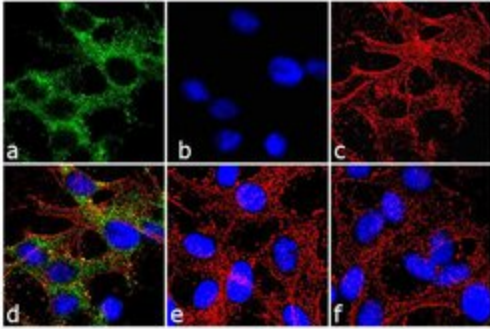
### Connexin 36 Antibody (710663)

Altered expression of proteins upon cell treatment demonstrates antibody specificity. Western blot using Connexin 36 Antibody (12HCLC) Recombinant Rabbit Polyclonal (Product # 710663) shows increased expression of Connexin 36 in SH-SY5Y cell line upon Retinoic acid treatment. Cell treatment validation info.



### Connexin 36 Antibody (710663)

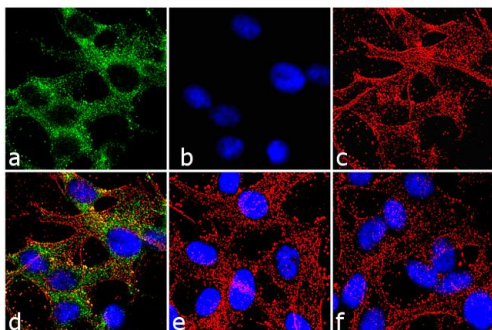
Altered expression of proteins upon cell treatment demonstrates antibody specificity. Immunofluorescence analysis of Connexin 36 using Connexin 36 Antibody (12HCLC) Recombinant Rabbit Polyclonal (Product # 710663) shows expression of Connexin 36 in the cytoplasm of SH-SY5Y cells upon retinoic acid treatment. Cell treatment validation info.



## Product Images For Connexin 36 Recombinant Polyclonal Antibody (12HCLC)

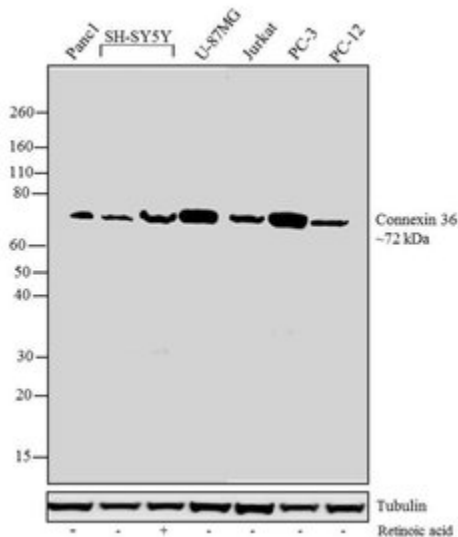
### Connexin 36 Antibody (710663) in IF

Immunofluorescence was performed on fixed and permeabilized SH-SY5Y cells treated with retinoic acid (10 uM/72 hours) for detection of Connexin 36 using Anti-Connexin 36 Recombinant Rabbit Polyclonal Antibody (Product # 710663, 2 µg/mL) and labeled with Goat anti-Rabbit IgG (H+L) Superclonal™ Secondary Antibody, Alexa Fluor® 488 conjugate (Product # A27034, 1:2000). Panel a) shows representative cells that were stained for detection and localization of connexin 36 protein (green), Panel b) is stained for nuclei (blue) using SlowFade® Gold Antifade Mountant with DAPI (Product # S36938). Panel c) represents cytoskeletal F-actin staining using Alexa Fluor® 555 Rhodamine Phalloidin (Product # R415, 1:300). Panel d) is a composite image of Panels a, b and c clearly demonstrating punctate cytoplasmic localization of connexin 36. Panel e) represents control cells with no primary Antibody to assess background.



### Connexin 36 Antibody (710663) in WB

Western blot analysis was performed on whole cell extracts (50 µg lysate) of Panc-1 (Lane1), SH-SY5Y (Lane 2), SH-SY5Y treated with retinoic acid (10 uM/ 72 hours) (Lane 3), U-87MG (Lane 4), Jurkat (Lane 5), PC-3 (Lane 6) and PC-12 (Lane 7). The blots were probed with Anti-Connexin 36 Recombinant Rabbit Polyclonal Antibody (Product # 710663, 1-2 µg/mL) and detected by chemiluminescence using Goat anti-Rabbit IgG (H+L) Superclonal™ Secondary Antibody, HRP conjugate (Product # A27036, 0.4 µg/mL, 1:2500 dilution). A 72 kDa band corresponding to Connexin 36 was observed across cell lines tested. Connexins are known to form dimers which justifies the 72 kDa molecular weight. Known quantity of protein samples were electrophoresed using Novex® NuPAGE® 4-12% Bis-Tris gel (Product # NP0321BOX), XCell SureLock™ Electrophoresis System (Product # EI0002) and Novex® Sharp Pre-Stained Protein Standard (Product # LC5800). Resolved proteins were then transferred onto a nitrocellulose membrane with iBlot® Dry Blotting System (Product # IB21001). The membrane was probed with the relevant primary and secondary Antibody following blocking with 5% skimmed milk. Chemiluminescent detection was performed using Pierce™ ECL Western blotting Substrate (Product # 32106).



[View more figures on thermofisher.com](https://www.thermofisher.com)

For Research Use Only. Not for use in diagnostic procedures. Not for resale without express authorization. Products are warranted to operate or perform substantially in conformance with published Product specifications in effect at the time of sale, as set forth in the Production documentation, specifications and/or accompanying package inserts ("Documentation"). No claim of suitability for use in applications regulated by FDA is made. The warranty provided herein is valid only when used by properly trained individuals. Unless otherwise stated in the Documentation, this warranty is limited to one year from date of shipment when the Product is subjected to normal, proper and intended usage. This warranty does not extend to anyone other than the Buyer. Any model or sample furnished to Buyer is merely illustrative of the general type and quality of goods and does not represent that any Product will conform to such model or sample. NO OTHER WARRANTIES, EXPRESS OR IMPLIED, ARE GRANTED INCLUDING WITHOUT LIMITATION, IMPLIED WARRANTIES OF MERCHANTABILITY, FITNESS FOR ANY PARTICULAR PURPOSE, OR NON INFRINGEMENT. BUYER'S EXCLUSIVE REMEDY FOR NON-CONFORMING PRODUCTS DURING THE WARRANTY PERIOD IS LIMITED TO REPAIR, REPLACEMENT OF OR REFUND FOR THE NON-CONFORMING PRODUCT(S) AT SELLER'S SOLE OPTION. THERE IS NO OBLIGATION TO REPAIR, REPLACE OR REFUND FOR PRODUCTS AS THE RESULT OF (I) ACCIDENT, DISASTER OR EVENT OF FORCE MAJEURE, (II) MISUSE, FAULT OR NEGLIGENCE OF OR BY BUYER, (III) USE OF THE PRODUCTS IN A MANNER FOR WHICH THEY WERE NOT DESIGNED, OR (IV) IMPROPER STORAGE AND HANDLING OF THE PRODUCTS. Unless otherwise expressly stated on the Product or in the documentation accompanying the Product, the Product is intended for research only and is not to be used for any other purpose, including without limitation, unauthorized commercial uses, in vitro diagnostic uses, ex vivo or in vivo therapeutic uses, or any type of consumption by or application to human or animals.