

PRMT4 Recombinant Polyclonal Antibody (2HCLC)

Product Details	
Size	100 µg
Species Reactivity	Human
Host/Isotype	Rabbit / IgG
Expression system	Expi293
Class	Recombinant Polyclonal
Type	Antibody
Clone	2HCLC
Conjugate	Unconjugated
Immunogen	Protein corresponding to human PRMT4 [aa220-aa482]
Form	Liquid
Concentration	0.5 mg/mL
Purification	Protein A
Storage buffer	PBS, pH 7.4
Contains	0.09% sodium azide
Storage conditions	Store at 4°C short term. For long term storage, store at -20°C, avoiding freeze/thaw cycles.
RRID	AB_2723513

Applications	Tested Dilution	Publications
Western Blot (WB)	1:200	-

Product Specific Information

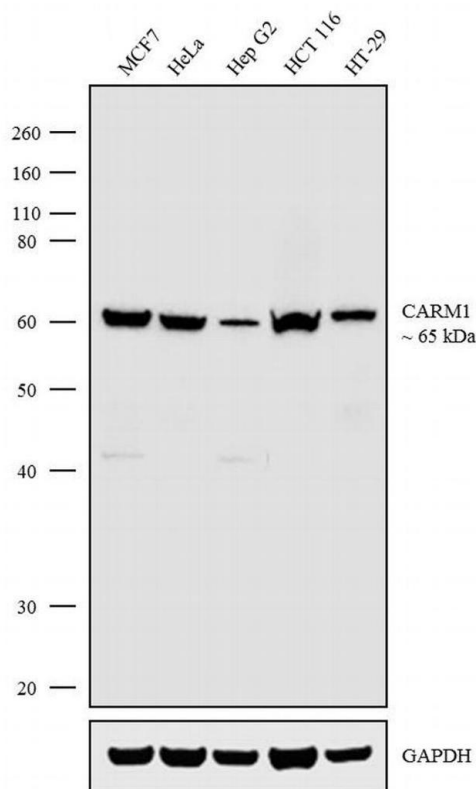
This antibody is predicted to react with Monkey, Pig, Mouse, Rat.

Recombinant rabbit polyclonal antibodies are unique offerings from Thermo Fisher Scientific. They are comprised of a selection of multiple different recombinant monoclonal antibodies, providing the best of both worlds - the sensitivity of polyclonal antibodies with the specificity of monoclonal antibodies - all delivered with the consistency only found in a recombinant antibody. While functionally the same as a polyclonal antibody - recognizing multiple epitope sites on the target and producing higher detection sensitivity for low abundance targets - a recombinant rabbit polyclonal antibody has a known mixture of light and heavy chains. The exact population can be produced in every lot, circumventing the biological variability typically associated with polyclonal antibody production.

Product Images For PRMT4 Recombinant Polyclonal Antibody (2HCLC)

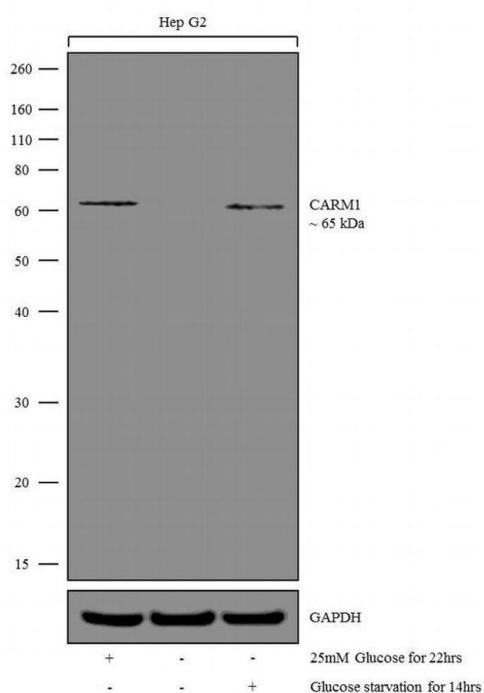
PRMT4 Antibody (711526) in WB

Western blot analysis was performed on modified whole cell extracts (1% SDS) (30 µg lysate) of MCF7 (Lane 1), HeLa (Lane 2), Hep G2 (Lane 3), HCT 116 (Lane 4) and HT-29 (Lane 5). The blot was probed with Anti-PRMT4 Recombinant Rabbit Polyclonal Antibody (Product # 711526, 1:200 dilution) and detected by chemiluminescence using Goat anti-Rabbit IgG (Heavy Chain) Superclonal™ Secondary Antibody, HRP conjugate (Product # A27036, 0.25 µg/mL, 1:4000 dilution). A 65 kDa band corresponding to CARM1 was observed across the cell lines tested.



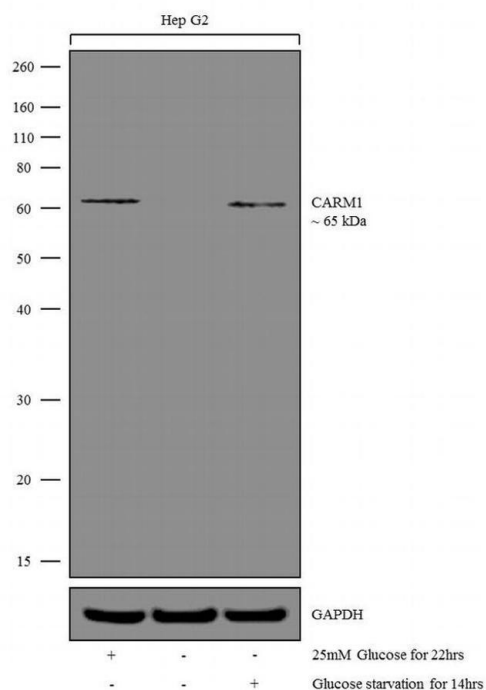
PRMT4 Antibody (711526)

Altered expression of proteins upon cell treatment demonstrates antibody specificity. Western blot using Anti-PRMT4 Recombinant Rabbit Polyclonal Antibody (Product # 711526, 1:200 dilution), shows increased expression of the protein CARM1 in Hep G2 cells in high-glucose and glucose starvation conditions (PMID: 27309807; 2507291). {TM}



PRMT4 Antibody (711526) in WB

Western blot analysis was performed on modified whole cell extracts (1% SDS) (30 µg lysate) of Hep G2 treated with 25mM of Glucose for 22 hrs (Lane 1), Hep G2 (Lane 2) and Hep G2 Glucose starved for 14 hrs (Lane 3). The blot was probed with Anti-PRMT4 Recombinant Rabbit Polyclonal Antibody (Product # 711526, 1:200 dilution) and detected by chemiluminescence using Goat anti-Rabbit IgG (Heavy Chain) Superclonal™ Secondary Antibody, HRP conjugate (Product # A27036, 0.25 µg/mL, 1:4000 dilution). A 65 kDa band corresponding to CARM1 was observed in the cell line tested.



For Research Use Only. Not for use in diagnostic procedures. Not for resale without express authorization. Products are warranted to operate or perform substantially in conformance with published Product specifications in effect at the time of sale, as set forth in the Production documentation, specifications and/or accompanying package inserts ("Documentation"). No claim of suitability for use in applications regulated by FDA is made. The warranty provided herein is valid only when used by properly trained individuals. Unless otherwise stated in the Documentation, this warranty is limited to one year from date of shipment when the Product is subjected to normal, proper and intended usage. This warranty does not extend to anyone other than the Buyer. Any model or sample furnished to Buyer is merely illustrative of the general type and quality of goods and does not represent that any Product will conform to such model or sample. NO OTHER WARRANTIES, EXPRESS OR IMPLIED, ARE GRANTED INCLUDING WITHOUT LIMITATION, IMPLIED WARRANTIES OF MERCHANTABILITY, FITNESS FOR ANY PARTICULAR PURPOSE, OR NON INFRINGEMENT. BUYER'S EXCLUSIVE REMEDY FOR NON-CONFORMING PRODUCTS DURING THE WARRANTY PERIOD IS LIMITED TO REPAIR, REPLACEMENT OF OR REFUND FOR THE NON-CONFORMING PRODUCT(S) AT SELLER'S SOLE OPTION. THERE IS NO OBLIGATION TO REPAIR, REPLACE OR REFUND FOR PRODUCTS AS THE RESULT OF (I) ACCIDENT, DISASTER OR EVENT OF FORCE MAJEURE, (II) MISUSE, FAULT OR NEGLIGENCE OF OR BY BUYER, (III) USE OF THE PRODUCTS IN A MANNER FOR WHICH THEY WERE NOT DESIGNED, OR (IV) IMPROPER STORAGE AND HANDLING OF THE PRODUCTS. Unless otherwise expressly stated on the Product or in the documentation accompanying the Product, the Product is intended for research only and is not to be used for any other purpose, including without limitation, unauthorized commercial uses, in vitro diagnostic uses, ex vivo or in vivo therapeutic uses, or any type of consumption by or application to human or animals.