

Phospho-PKC beta-1 (Thr642) Recombinant Polyclonal Antibody (24HCLC)

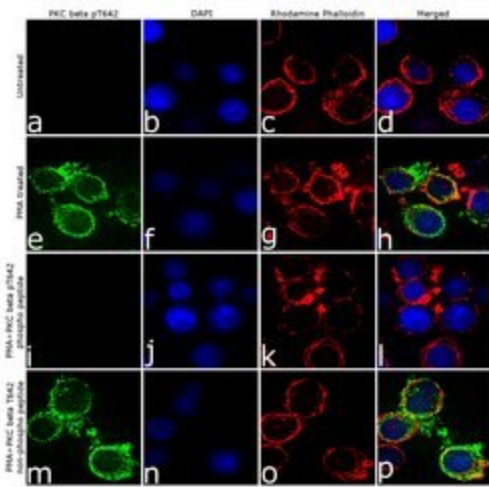
Product Details	
Size	100 µg
Species Reactivity	Human
Host/Isotype	Rabbit / IgG
Class	Recombinant Polyclonal
Type	Antibody
Clone	24HCLC
Conjugate	Unconjugated
Immunogen	Peptide corresponding to Human PKC-beta; PKCB; PRKCB; PRKCB1; PRKCB2 (Chemically synthesized phosphopeptide derived from a region of human PKCβ1 that contains threonine 642. The sequence is conserved in rat. (Antigen similar to 44-963G)
Form	Liquid
Concentration	0.5 mg/mL
Purification	Protein A
Storage buffer	PBS, pH 7.4
Contains	0.09% sodium azide
Storage Conditions	Store at 4°C short term. For long term storage, store at -20°C, avoiding freeze/thaw cycles.
RRID	AB_2632980

Applications	Tested Dilution	Publications
Immunocytochemistry (ICC)	2 µg/mL	-
Immunofluorescence (IF)	2 µg/mL	-

Product Specific Information

This antibody is predicted to react with Monkey, Rat, Bovine and Mouse

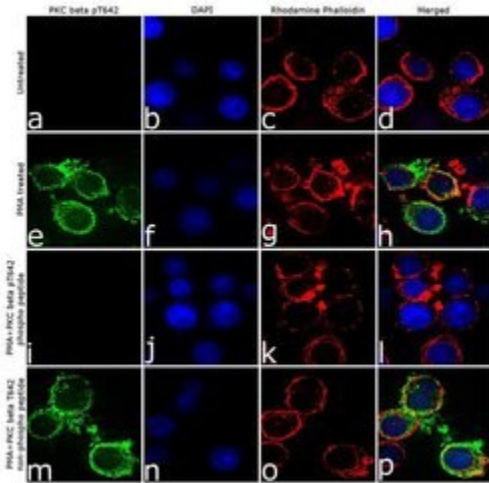
Recombinant rabbit polyclonal antibodies are unique offerings from Thermo Fisher Scientific. They are comprised of a selection of multiple different recombinant monoclonal antibodies, providing the best of both worlds - the sensitivity of polyclonal antibodies with the specificity of monoclonal antibodies - all delivered with the consistency only found in a recombinant antibody. While functionally the same as a polyclonal antibody - recognizing multiple epitope sites on the target and producing higher detection sensitivity for low abundance targets - a recombinant rabbit polyclonal antibody has a known mixture of light and heavy chains. The exact population can be produced in every lot, circumventing the biological variability typically associated with polyclonal antibody production.



Phospho-PKC beta-1 (Thr642) Antibody (711607)

Modulation of expression of target protein by cell treatment to demonstrate antibody specificity. Immunofluorescence analysis of PKC beta pT642 using Anti- PKC beta I [pT642] Recombinant Rabbit Polyclonal Antibody (Product # 711607) shows detection and cytoplasmic localization of PKC beta pT642 in Jurkat cells treated with PMA as compared to untreated Jurkat cells. Cell treatment validation info.

Product Images For Phospho-PKC beta-1 (Thr642) Recombinant Polyclonal Antibody (24HCLC)



Phospho-PKC beta-1 (Thr642) Antibody (711607) in IF

For immunofluorescence analysis Jurkat cells were fixed and permeabilized for detection of endogenous PKC beta pT642 using Anti- PKC beta I (pT642) Recombinant Rabbit Polyclonal Antibody (Product # 711607, 2 µg/mL) and labeled with Goat anti-Rabbit IgG (H+L) Superclonal Secondary Antibody, Alexa Fluor® 488 conjugate (Product # A27034, 1:2000). Nuclei (blue) were stained using SlowFade® Gold Antifade Mountant with DAPI (Product # S36938), and Alexa Fluor® 555 Rhodamine Phalloidin (Product # R415, 1:300) was used for cytoskeletal F-actin (red) staining. Detection and localization of PKC beta pT642 (green) in the cytoplasm can be clearly observed in cells treated with PMA (100 ng/mL, 30 min) as compared to untreated cells. Antibody specificity was demonstrated by competition with the PKC beta pT642 phospho peptide, which results in loss of signal. No competition was observed with the non-phospho peptide. The images were captured at 60X magnification.

For Research Use Only. Not for use in diagnostic procedures. Not for resale without express authorization. Products are warranted to operate or perform substantially in conformance with published Product specifications in effect at the time of sale, as set forth in the Production documentation, specifications and/or accompanying package inserts ("Documentation"). No claim of suitability for use in applications regulated by FDA is made. The warranty provided herein is valid only when used by properly trained individuals. Unless otherwise stated in the Documentation, this warranty is limited to one year from date of shipment when the Product is subjected to normal, proper and intended usage. This warranty does not extend to anyone other than the Buyer. Any model or sample furnished to Buyer is merely illustrative of the general type and quality of goods and does not represent that any Product will conform to such model or sample. NO OTHER WARRANTIES, EXPRESS OR IMPLIED, ARE GRANTED INCLUDING WITHOUT LIMITATION, IMPLIED WARRANTIES OF MERCHANTABILITY, FITNESS FOR ANY PARTICULAR PURPOSE, OR NON INFRINGEMENT. BUYER'S EXCLUSIVE REMEDY FOR NON-CONFORMING PRODUCTS DURING THE WARRANTY PERIOD IS LIMITED TO REPAIR, REPLACEMENT OF OR REFUND FOR THE NON-CONFORMING PRODUCT(S) AT SELLER'S SOLE OPTION. THERE IS NO OBLIGATION TO REPAIR, REPLACE OR REFUND FOR PRODUCTS AS THE RESULT OF (I) ACCIDENT, DISASTER OR EVENT OF FORCE MAJEURE, (II) MISUSE, FAULT OR NEGLIGENCE OF OR BY BUYER, (III) USE OF THE PRODUCTS IN A MANNER FOR WHICH THEY WERE NOT DESIGNED, OR (IV) IMPROPER STORAGE AND HANDLING OF THE PRODUCTS. Unless otherwise expressly stated on the Product or in the documentation accompanying the Product, the Product is intended for research only and is not to be used for any other purpose, including without limitation, unauthorized commercial uses, in vitro diagnostic uses, ex vivo or in vivo therapeutic uses, or any type of consumption by or application to human or animals.