

BDKRB2 Recombinant Polyclonal Antibody (13HCLC)

| Product Details | |
|--------------------|--|
| Size | 100 µg |
| Species Reactivity | Human |
| Host/Isotope | Rabbit / IgG |
| Class | Recombinant Polyclonal |
| Type | Antibody |
| Clone | 13HCLC |
| Conjugate | Unconjugated |
| Immunogen | Peptide corresponding to human BDKRB2 [aa377-aa391] |
| Form | Liquid |
| Concentration | 0.5 mg/mL |
| Purification | Protein A |
| Storage buffer | PBS, pH 7.4 |
| Contains | 0.09% sodium azide |
| Storage Conditions | Store at 4°C short term. For long term storage, store at -20°C, avoiding freeze/thaw cycles. |
| RRID | AB_2784602 |

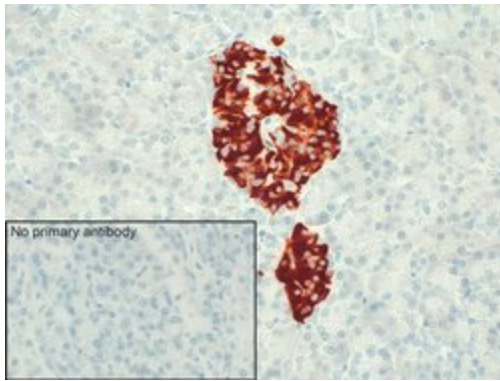
| Applications | Tested Dilution | Publications |
|----------------------------|-----------------|--------------|
| Immunohistochemistry (IHC) | 1:500 | - |
| Western Blot (WB) | 1:500 | - |

Product Specific Information

This antibody is predicted to react with Monkey, Mouse, Cat.

Recombinant rabbit polyclonal antibodies are unique offerings from Thermo Fisher Scientific. They are comprised of a selection of multiple different recombinant monoclonal antibodies, providing the best of both worlds - the sensitivity of polyclonal antibodies with the specificity of monoclonal antibodies - all delivered with the consistency only found in a recombinant antibody. While functionally the same as a polyclonal antibody - recognizing multiple epitope sites on the target and producing higher detection sensitivity for low abundance targets - a recombinant rabbit polyclonal antibody has a known mixture of light and heavy chains. The exact population can be produced in every lot, circumventing the biological variability typically associated with polyclonal antibody production.

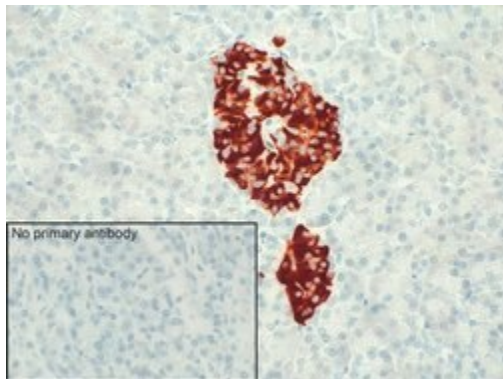
Advanced Verification Data



BDKRB2 Antibody (711638)

Antibody specificity was demonstrated by detection of differential basal expression of the target owing to their inherent genetic constitution. Strong staining of distinct cells in pancreatic islets was observed in the human pancreas tested using Anti-BDKRB2 Recombinant Rabbit Polyclonal Antibody (Product # 711638) in Immunohistochemistry. Relative expression validation info.

Product Images For BDKRB2 Recombinant Polyclonal Antibody (13HCLC)

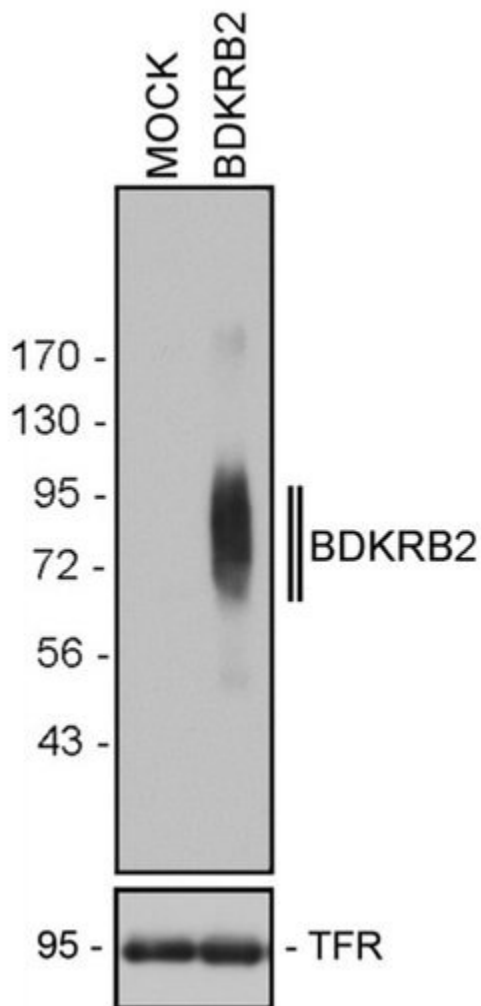


BDKRB2 Antibody (711638) in IHC

Sections of human pancreas were dewaxed, microwaved in citric acid and incubated with Anti-BDKRB2 Recombinant Rabbit Polyclonal Antibody (Product # 711638, 1:500 dilution). Sections were then sequentially treated with biotinylated Anti-rabbit IgG and AB solution. Sections were then developed in AEC and lightly counterstained with hematoxylin.

BDKRB2 Antibody (711638) in WB

HEK-293 cells were stably transfected with BDKRB2. Cells were lysed in detergent buffer and glycoproteins were enriched using wheat germ lectin agarose beads. Receptors were eluted from the beads using SDS sample buffer for 20 min at 45 °C. Extracts were separated on 7.5% SDS-polyacrylamide gels and blotted onto PVDF membranes. Membranes were then incubated with Anti-BDKRB2 Recombinant Rabbit Polyclonal Antibody (Product # 711638, 1:500 dilution). Ordinate, protein molecular weight marker (kDa).



For Research Use Only. Not for use in diagnostic procedures. Not for resale without express authorization. Products are warranted to operate or perform substantially in conformance with published Product specifications in effect at the time of sale, as set forth in the Production documentation, specifications and/or accompanying package inserts ("Documentation"). No claim of suitability for use in applications regulated by FDA is made. The warranty provided herein is valid only when used by properly trained individuals. Unless otherwise stated in the Documentation, this warranty is limited to one year from date of shipment when the Product is subjected to normal, proper and intended usage. This warranty does not extend to anyone other than the Buyer. Any model or sample furnished to Buyer is merely illustrative of the general type and quality of goods and does not represent that any Product will conform to such model or sample. NO OTHER WARRANTIES, EXPRESS OR IMPLIED, ARE GRANTED INCLUDING WITHOUT LIMITATION, IMPLIED WARRANTIES OF MERCHANTABILITY, FITNESS FOR ANY PARTICULAR PURPOSE, OR NON INFRINGEMENT. BUYER'S EXCLUSIVE REMEDY FOR NON-CONFORMING PRODUCTS DURING THE WARRANTY PERIOD IS LIMITED TO REPAIR, REPLACEMENT OF OR REFUND FOR THE NON-CONFORMING PRODUCT(S) AT SELLER'S SOLE OPTION. THERE IS NO OBLIGATION TO REPAIR, REPLACE OR REFUND FOR PRODUCTS AS THE RESULT OF (I) ACCIDENT, DISASTER OR EVENT OF FORCE MAJEURE, (II) MISUSE, FAULT OR NEGLIGENCE OF OR BY BUYER, (III) USE OF THE PRODUCTS IN A MANNER FOR WHICH THEY WERE NOT DESIGNED, OR (IV) IMPROPER STORAGE AND HANDLING OF THE PRODUCTS. Unless otherwise expressly stated on the Product or in the documentation accompanying the Product, the Product is intended for research only and is not to be used for any other purpose, including without limitation, unauthorized commercial uses, in vitro diagnostic uses, ex vivo or in vivo therapeutic uses, or any type of consumption by or application to human or animals.